

LOC/DME I-OSS <b>108.5</b> Chan 22	APP CRS <b>251°</b>	Rwy Idg THRE Apt Elev	24R <b>8925</b>	24L <b>10285</b> <b>120</b> <b>121</b> <b>126</b>
--	------------------------	-----------------------------	--------------------	---

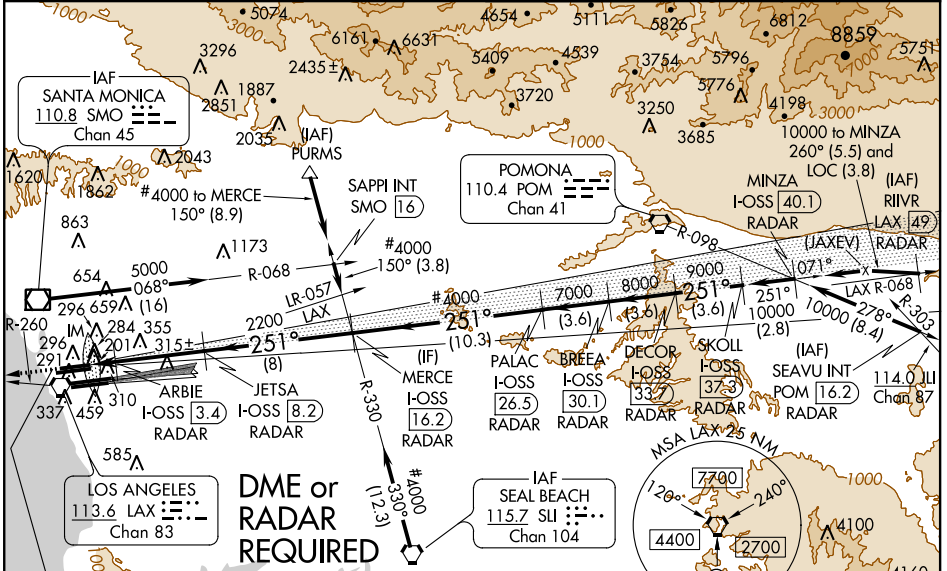
# ILS or LOC RWY 24R

LOS ANGELES INTL (LAX)

**⚠ Inoperative table does not apply to Sidestep Rwy 24L Cats A/B. For inoperative MALS/R, increase S-LOC Rwy 24R Cat D visibility to RVR 5000. LOC procedure NA during simultaneous operation. Simultaneous approach authorized with Rwy 25L/R.**

ALS-F2 Rwy 24R <b>(A)</b>	MALS/R Rwy 24L <b>(AS)</b>	MISSED APPROACH: Climb to 2000 via heading 249° and LAX R-260 to RAFFS INT/ LAX 15.1 DME and hold.
------------------------------	-------------------------------	--

ATIS ARR <b>133.8</b> DEP <b>135.65</b>	<b>124.3 363.2</b> (223°-044°)	SOCAL APP CON <b>124.9 269.0</b> (090°-224°) <b>128.5 360.7</b> (045°-089°)	LOS ANGELES TOWER <b>N 133.9 239.3</b> <b>S 120.95 379.1</b>	GND CON <b>N 121.65 327.0</b> <b>S 121.75 327.0</b>	CLNC DEL <b>121.4 327.0</b>
---	-----------------------------------	---	--	---	--------------------------------



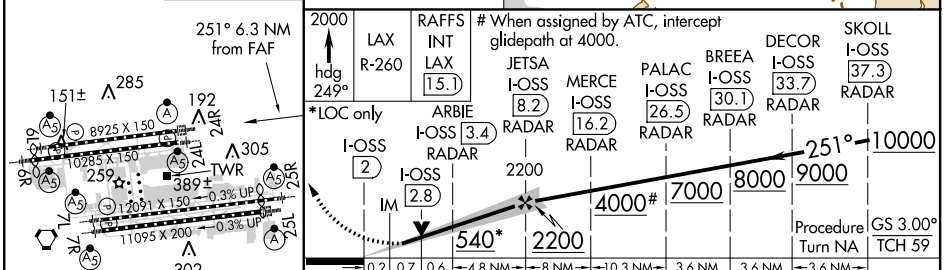
SW-3, 07 FEB 2013 to 07 MAR 2013

SW-3, 07 FEB 2013 to 07 MAR 2013

**DME or RADAR REQUIRED**

Procedure NA for arrivals at PURMS via V186 northwest bound.  
 Procedure NA for arrival on SLI VORTAC airway radials 272 CW 319.  
 Procedure NA for arrivals at SMO VOR/DME via V107 westbound.

ELEV 126	THRE 24R 120	THRE 24L 121
----------	--------------	--------------



TDZ/CL Rwy 6R, 7L, 24R, and 25L HIRL all Rwy	FAF to MAP 6.3 NM	251° 6.3 NM from FAF				
Knots	60	90	120	150	180	
Min:Sec	6:18	4:12	3:09	2:31	2:06	
CATEGORY	S-ILS 24R				320/18 200 (200-½)	
CATEGORY	S-LOC 24R				460/24 340 (400-½) 460/40 340 (400-¾)	
SIDESTEP RWY 24L	580/50 459 (500-1)				580-1½ 459 (500-1½)	