

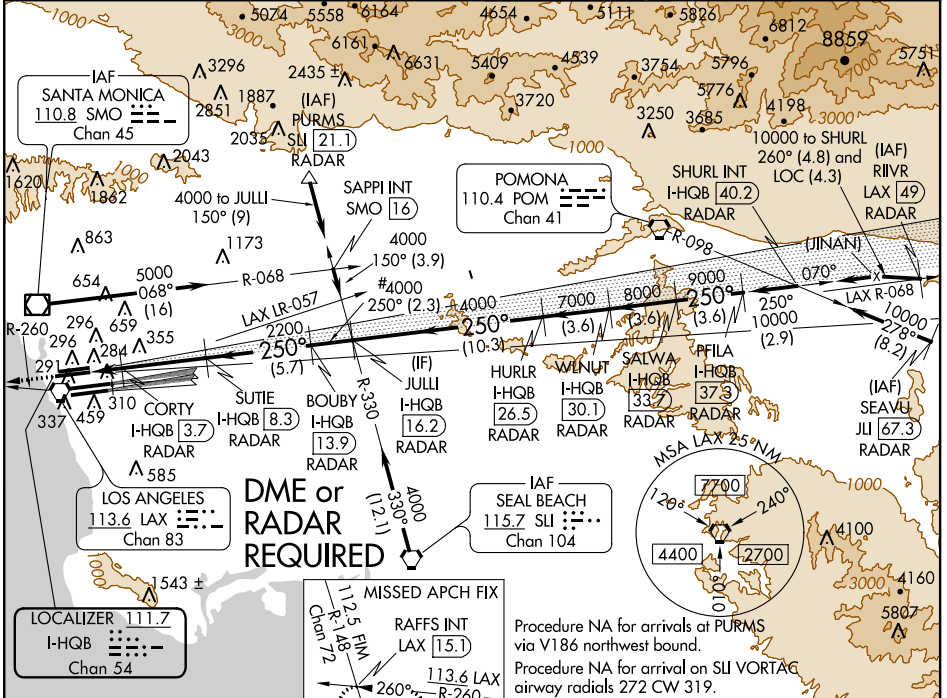
LOC/DME I-HQB <b>111.7</b> Chan <b>54</b>	APP CRS <b>250°</b>	Rwy Idg THRE <b>111</b> Apt Elev <b>126</b>	24L <b>10285</b> 24R <b>8925</b>
---	------------------------	---	-------------------------------------

# ILS or LOC RWY 24L

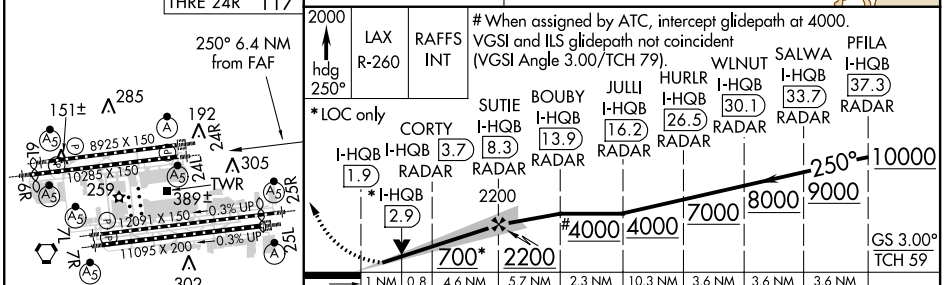
LOS ANGELES INTL (LAX)

▼ Inoperative table does not apply to Sidestep Rwy 24R Cats A/B. Simultaneous approach authorized with Rwy 25L/R. LOC procedure NA during simultaneous operations.

ATIS ARR <b>133.8</b> DEP <b>135.65</b>	<b>124.3 363.2</b> (APCH FM WEST) <b>124.5 235.975</b> (225°-044°)	SOCAL APP CON <b>124.9 269.0</b> (090°-224°) <b>128.5 360.7</b> (045°-089°)	LOS ANGELES TOWER <b>N 133.9 239.3</b> <b>S 120.95 379.1</b>	GND CON <b>N 121.65 327.0</b> <b>S 121.75 327.0</b>	CLNC DEL <b>121.4 327.0</b>
---	---	---	--	---	--------------------------------



ELEV 126	THRE 24L 111	THRE 24R 117
----------	--------------	--------------



TDZ/CL Rwy 6R, 7L, 24R, and 25L	HIRL all Rwy						
FAF to MAP 6.4 NM							
Knots	60	90	120	150	180		
Min:Sec	6:24	4:16	3:12	2:34	2:08		
CATEGORY	A				B	C	D
S-ILS 24L	311/24				200 (200-½)		
S-LOC 24L	500/24		389 (400-½)		500/35 389 (400-¾)		
SIDESTEP 24R	700/55		583 (600-¼)		700-1¼ 583 (600-¼)		

SW-3, 07 FEB 2013 to 07 MAR 2013

SW-3, 07 FEB 2013 to 07 MAR 2013