

LOC/DME I-LAX 109.9 Chan 36	APP CRS 251°	Rwy Idg THRE 98 Apt Elev 126	11095
---	------------------------	---	--------------

ILS RWY 25L (CAT III)

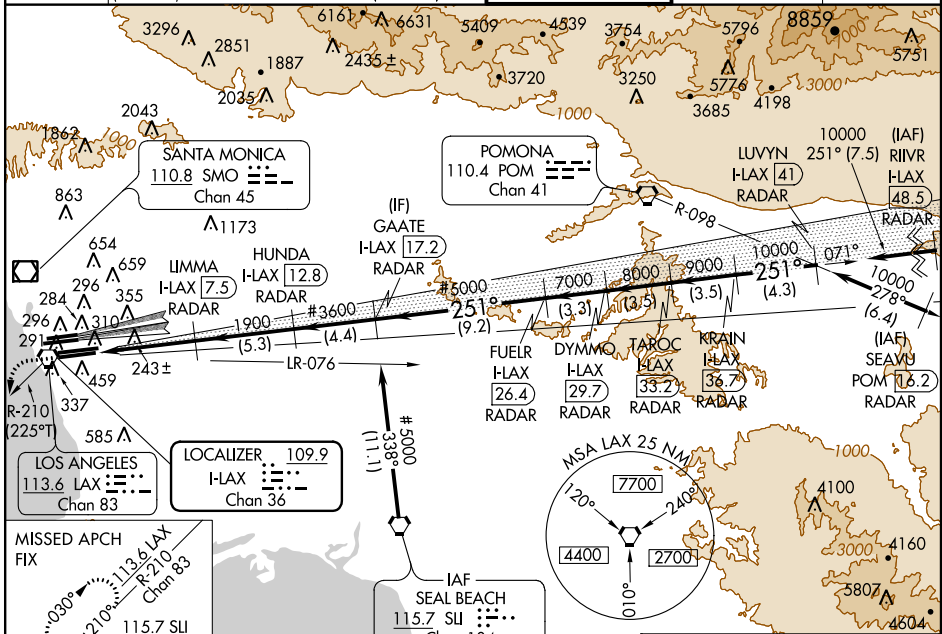
LOS ANGELES INTL (LAX)

Simultaneous approach authorized with Rwy 24L/R.

ALSF-2

MISSED APPROACH: Climb to 800 then climbing left turn to 2000 via heading 190° and LAX VORTAC R-210 to CATLY INT/LAX 12.8 DME and hold.

ATIS ARR 133.8 DEP 135.65	124.3 363.2 (ARCH FM WEST) 124.5 235.975 (225°-044°)	SOCAL APP CON 124.9 269.0 (090°-224°) 128.5 360.7 (045°-089°)	LOS ANGELES TOWER N 133.9 239.3 S 120.95 379.1	GND CON N 121.65 327.0 S 121.75 327.0	CLNC DEL 121.4 327.0
---	---	---	--	---	--------------------------------



SW-3, 07 FEB 2013 to 07 MAR 2013

SW-3, 07 FEB 2013 to 07 MAR 2013

Procedure NA for arrivals at SLI VORTAC on V459-597 southbound.

DME or RADAR REQUIRED

800	2000	LAX R-210	CATLY INT	# When assigned by ATC, intercept glidepath at 3600 or 5000.								
hdg 190°				LIMMA I-LAX 7.5 RADAR	HUNDA I-LAX 12.8 RADAR	GAATE I-LAX 17.2 RADAR	FUELR I-LAX 26.4 RADAR	TAROC I-LAX 33.2 RADAR	KRAIN I-LAX 36.7 RADAR	LUVYN I-LAX 41 RADAR		
98 MSL				1900	3600#	5000#	7000	8000	9000	10000		
				1001	5.5 NM	5.3 NM	4.4 NM	9.2 NM	3.3 NM	3.5 NM	3.5 NM	4.3 NM
CATEGORY	A	B	C	D								
S-ILS 25L		CAT IIIa	RVR 07									
S-ILS 25L		CAT IIIb	RVR 06									
S-ILS 25L		CAT IIIc	NA									

