

LOC/DME I-LAX <b>109.9</b> Chan <b>36</b>	APP CRS <b>251°</b>	Rwy Idg THRE <b>98</b> Apt Elev <b>126</b>	<b>11095</b>
---	------------------------	---	--------------

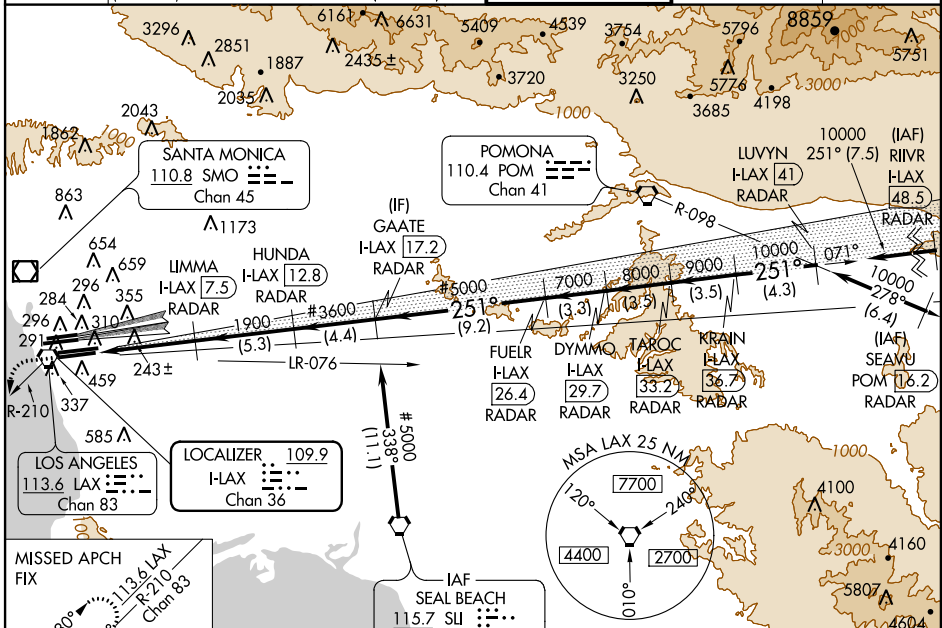
# ILS RWY 25L (CAT II)

LOS ANGELES INTL (LAX)

Simultaneous approach authorized with Rwy 24L/R. ALSF-2

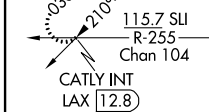
MISSED APPROACH: Climb to 800 then climbing left turn to 2000 on heading 190° and LAX VORTAC R-210 to CATLY INT/LAX 12.8 DME and hold.

ATIS ARR <b>133.8</b> DEP <b>135.65</b>	<b>124.3 363.2</b> (ARCH FM WEST) <b>124.5 235.975</b> (225°-044°)	SOCAL APP CON <b>124.9 269.0</b> (090°-224°) <b>128.5 360.7</b> (045°-089°)	LOS ANGELES TOWER <b>N 133.9 239.3</b> <b>S 120.95 379.1</b>	GND CON <b>N 121.65 327.0</b> <b>S 121.75 327.0</b>	CLNC DEL <b>121.4 327.0</b>
---	---	---	--	---	--------------------------------



SW-3, 07 FEB 2013 to 07 MAR 2013

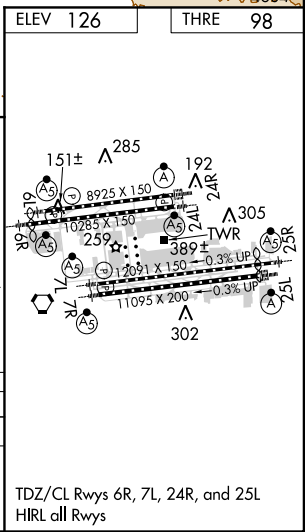
SW-3, 07 FEB 2013 to 07 MAR 2013



Procedure NA for arrivals at SLI VORTAC on V459-597 southbound.

**DME or RADAR REQUIRED**

800	2000	LAX R-210	CATLY INT	# When assigned by ATC, intercept glidepath at 3600 or 5000.						
hdg 190°				LIMMA I-LAX [7.5] RADAR	HUNDA I-LAX [12.8] RADAR	GAATE I-LAX [17.2] RADAR	FUELR I-LAX [26.4] RADAR	TAROC I-LAX [33.2] RADAR	KRAIN I-LAX [36.7] RADAR	LUVYN I-LAX [41] RADAR
DH RA 107				1900	3600#	5000#	7000	8000	9000	10000
98 MSL				1900						GS 3.00° TCH 56
	1001 939'	5.3 NM	-5.3 NM	4.4 NM	9.2 NM	3.3 NM	3.5 NM	3.5 NM	-4.3 NM	
CATEGORY		A		B		C		D		
S-ILS 25L		RA 107/12 100 DA 198								



**CATEGORY II ILS - SPECIAL AIRCREW & AIRCRAFT CERTIFICATION REQUIRED**

TDZ/CL Rwy's 6R, 7L, 24R, and 25L  
HIRL all Rwy's