

LOC/DME I-OSS <b>108.5</b>	APP CRS <b>251°</b>	Rwy Idg <b>8925</b>
Chan <b>22</b>	TDZE <b>120</b>	Apt Elev <b>126</b>

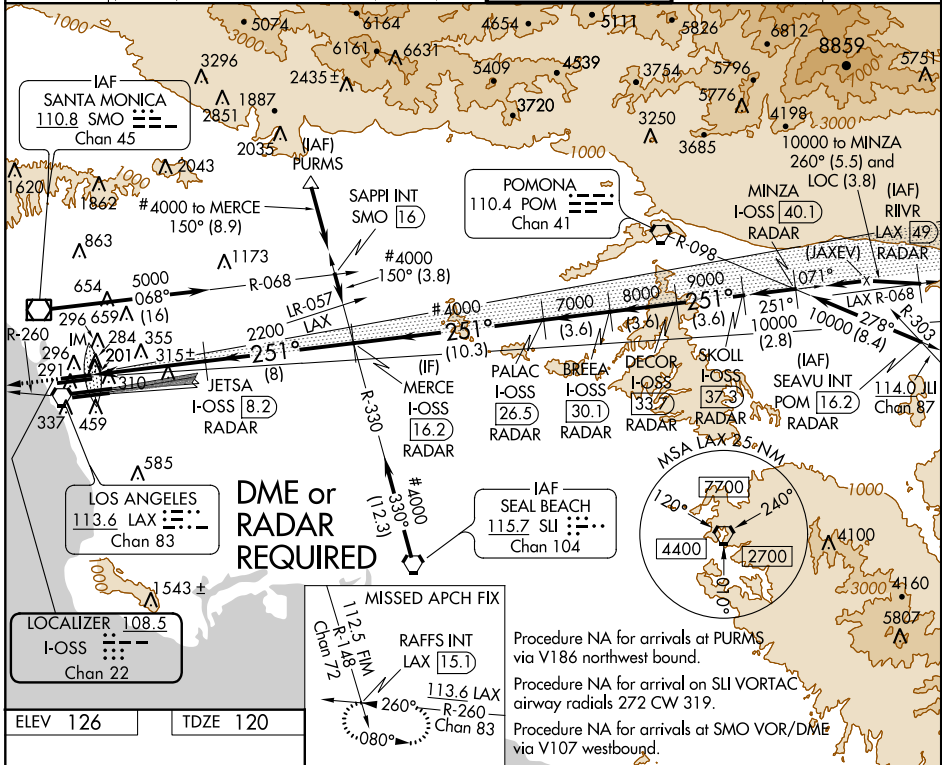
# ILS RWY 24R (CAT II)

LOS ANGELES INTL (LAX)

Simultaneous approach authorized with Rwy 25L/R. ALSF-2

MISSED APPROACH: Climb to 2000 via heading 249° and LAX R-260 to RAFFS INT/LAX 15.1 DME and hold.

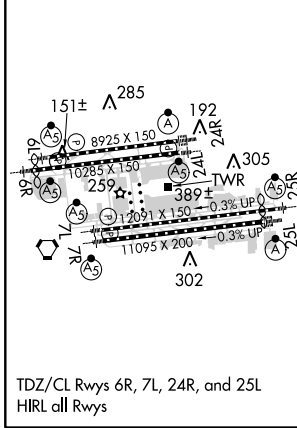
ATIS ARR <b>133.8</b> DEP <b>135.65</b>	<b>124.3 363.2</b> [APCH FM WEST] <b>124.5 235.975</b> (225°-044°)	SOCAL APP CON <b>124.9 269.0</b> (090°-224°) <b>128.5 360.7</b> (045°-089°)	LOS ANGELES TOWER <b>N 133.9 239.3</b> <b>S 120.95 379.1</b>	GND CON <b>N 121.65 327.0</b> <b>S 121.75 327.0</b>	CLNC DEL <b>121.4 327.0</b>
---	---	---	--	---	--------------------------------



SW-3, 07 FEB 2013 to 07 MAR 2013

SW-3, 07 FEB 2013 to 07 MAR 2013

ELEV <b>126</b>	TDZE <b>120</b>
-----------------	-----------------



2000 hdg 249°	LAX R-260	RAFFS INT LAX [15.1]	# When assigned by ATC, intercept glidepath at 4000.
	JETSAT I-OSS [8.2] RADAR	MERCE I-OSS [16.2] RADAR	PALAC I-OSS [26.5] RADAR
	BREEA I-OSS [30.1] RADAR	DECOR I-OSS [33.7] RADAR	SKOLL I-OSS [37.3] RADAR
			Procedure Turn NA
			GS 3.00°
			TCH 59

CATEGORY	A	B	C	D
S-ILS 24R	RA 115/12 100 DA 220			

## CATEGORY II ILS - SPECIAL AIRCREW & AIRCRAFT CERTIFICATION REQUIRED