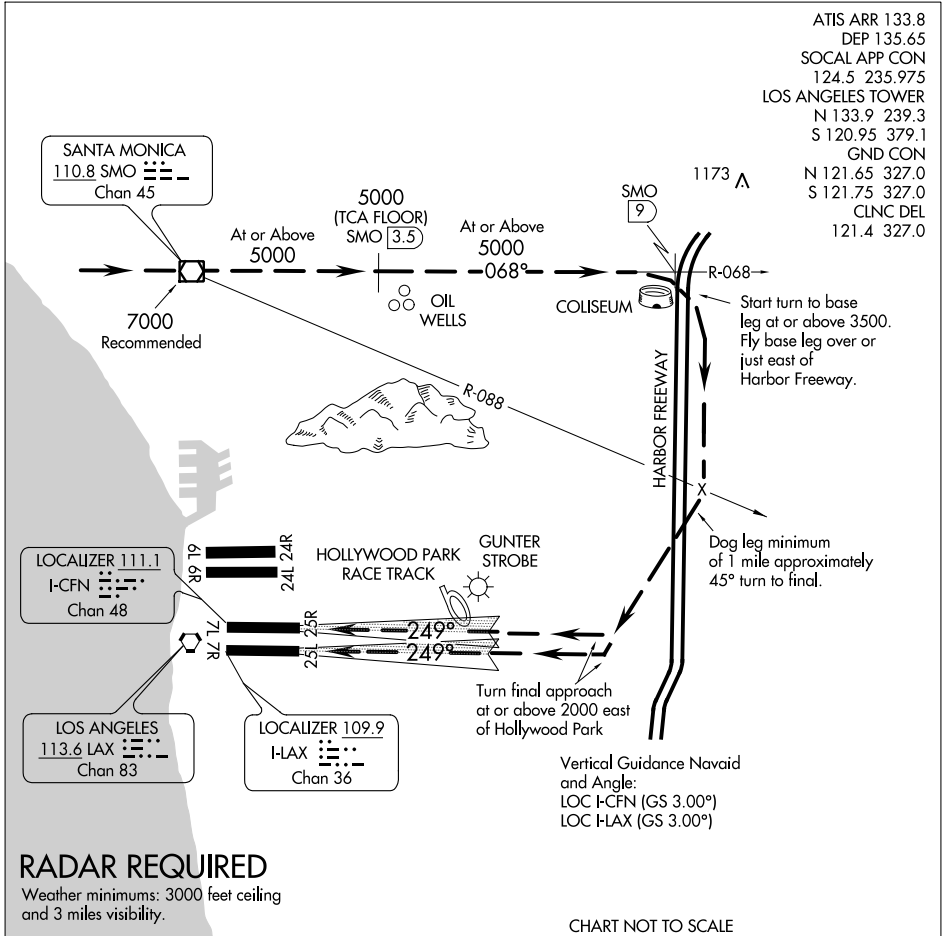


HARBOR VISUAL RWY 25L/R

LOS ANGELES INTL (LAX)
LOS ANGELES, CALIFORNIA

ATIS ARR 133.8
 DEP 135.65
 SOCIAL APP CON
 124.5 235.975
 LOS ANGELES TOWER
 N 133.9 239.3
 S 120.95 379.1
 GND CON
 N 121.65 327.0
 S 121.75 327.0
 CLNC DEL
 121.4 327.0



SW-3, 07 FEB 2013 to 07 MAR 2013

SW-3, 07 FEB 2013 to 07 MAR 2013

RADAR REQUIRED

Weather minimums: 3000 feet ceiling and 3 miles visibility.

CHART NOT TO SCALE

HARBOR VISUAL APPROACH

When visual approaches to Runways 25L/R are in progress, clearances to aircraft from the north and northwest will be given utilizing the following phraseology:

"(IDENT) CLEARED FOR HARBOR VISUAL RUNWAY 25 LEFT/RIGHT APPROACH."

A descent profile of approximately 3° starting at 7000 over SMO VOR/DME may be made with reference to the minimum altitudes above.

HARBOR VISUAL RWY 25L/R

LOS ANGELES, CALIFORNIA
LOS ANGELES INTL (LAX)