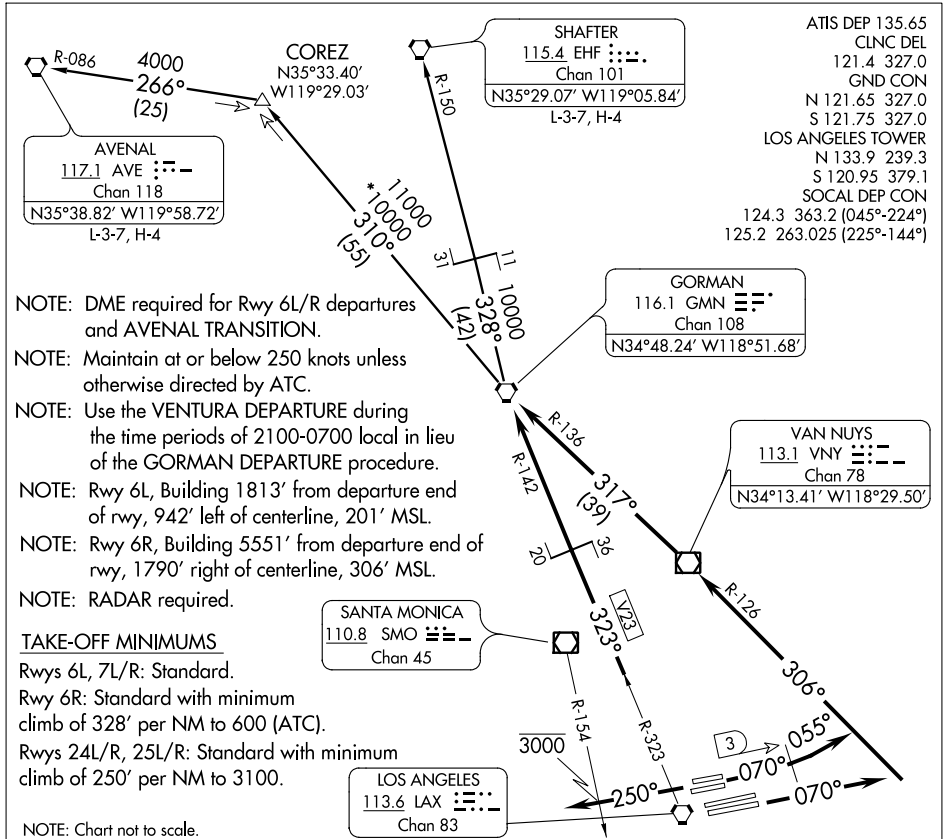


GORMAN FOUR DEPARTURE

SL-237 (FAA)

LOS ANGELES INTL (LAX)
LOS ANGELES, CALIFORNIA



DEPARTURE ROUTE DESCRIPTION

TAKE-OFF RUNWAYS 6L/R: Climb via heading 070° until LAX VORTAC 3 DME, then turn left heading 055° for vector to join VNY R-126 to VNY VOR/DME, then via VNY R-317 and GMN R-136 to GMN VORTAC. Thence....

TAKE-OFF RUNWAYS 7L/R: Climb via heading 070° for vector to join VNY R-126 to VNY VOR/DME, then via VNY R-317 and GMN R-136 to GMN VORTAC. Thence....

TAKE-OFF RUNWAYS 24L/R, 25L/R: Climb via heading 250° to cross SMO R-154 at or below 3000, then via radar vectors to proceed via LAX R-323 and GMN R-142 to GMN VORTAC. Thence....

...via (assigned transition) or (assigned route). All aircraft expect further clearance to filed flight level three minutes after departure.

LOST COMMUNICATIONS: If not in contact with departure control within five minutes after departure, climb to FL230 or filed altitude whichever is lower. Aircraft filing FL240 or above climb to filed altitude ten minutes after departure.

AVENAL TRANSITION (GMN4.AVE): From over GMN VORTAC via GMN R-310 and AVE R-086 to AVE VORTAC.

SHAFTER TRANSITION (GMN4.EHF): From over GMN VORTAC via GMN R-328 and EHF R-150 to EHF VORTAC.

GORMAN FOUR DEPARTURE

SW-3, 07 FEB 2013 to 07 MAR 2013

SW-3, 07 FEB 2013 to 07 MAR 2013