

FIXIT ONE DEPARTURE (RNAV)

SL-237 (FAA)

LOS ANGELES INTL (LAX)
LOS ANGELES, CALIFORNIA

SW-3, 07 FEB 2013 to 07 MAR 2013

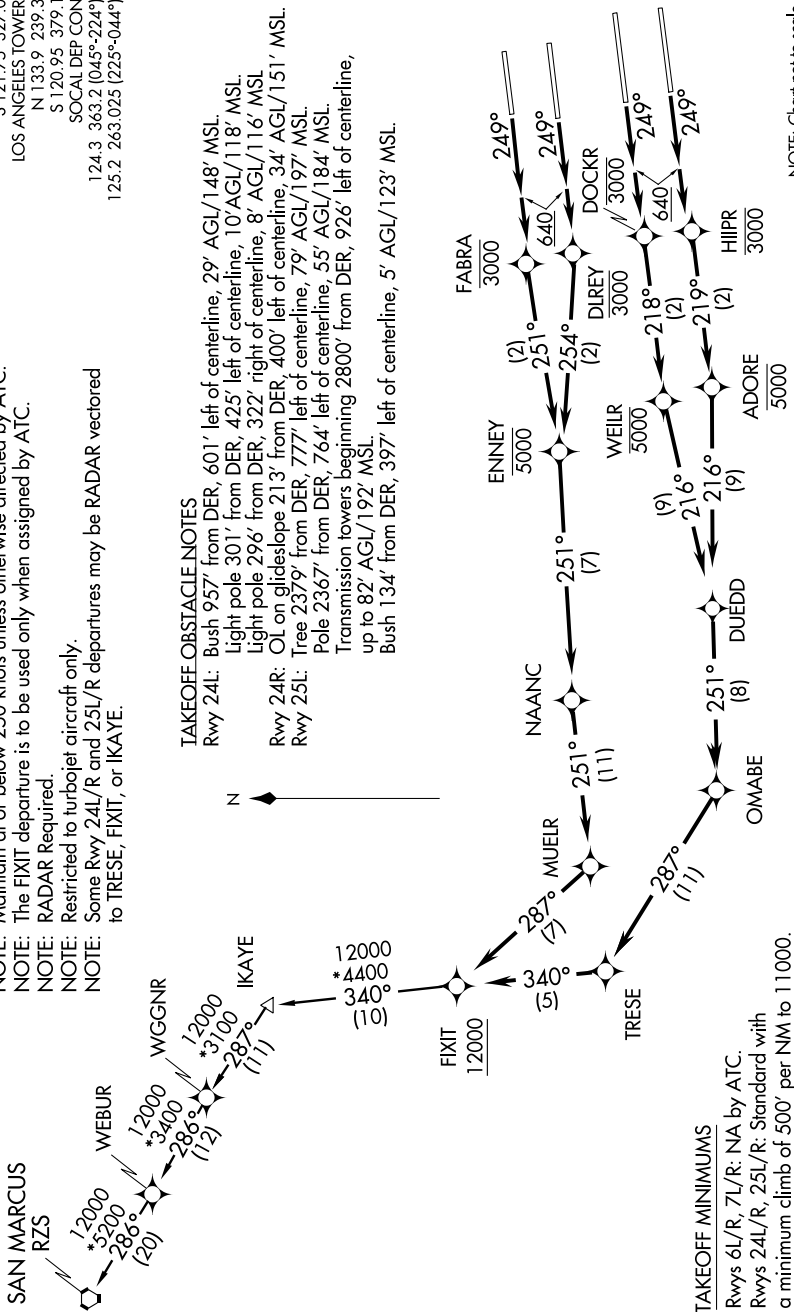
(NARRATIVE ON FOLLOWING PAGE)

- NOTE: DME/DME/IRU or GPS Required.
- NOTE: RNAV 1.
- NOTE: Maintain at or below 250 knots unless otherwise directed by ATC.
- NOTE: The FIXIT departure is to be used only when assigned by ATC.
- NOTE: RADAR Required.
- NOTE: Restricted to turbojet aircraft only.
- NOTE: Some Rwy 24L/R and 25L/R departures may be RADAR vectored to TRESE, FIXIT, or IKAYE.

ATIS 135.65
 CLNC DEL 121.4 327.0
 GND CON 121.65 327.0
 S 121.75 327.0
 LOS ANGELES TOWER N 133.9 239.3
 S 120.95 379.1
 SOCIAL DEP CON 124.3 363.2 (045°-224°)
 125.2 263.025 (225°-044°)

TAKEOFF OBSTACLE NOTES

Rwy 24L: Bush 957' from DER, 601' left of centerline, 29' AGL/148' MSL.
 Light pole 301' from DER, 425' left of centerline, 10' AGL/118' MSL.
 Light pole 296' from DER, 322' right of centerline, 8' AGL/116' MSL.
 Rwy 24R: OL on glide slope 213' from DER, 400' left of centerline, 34' AGL/151' MSL.
 Rwy 25L: Tree 2379' from DER, 777' left of centerline, 79' AGL/197' MSL.
 Pole 2367' from DER, 764' left of centerline, 55' AGL/184' MSL.
 Transmission towers beginning 2800' from DER, 926' left of centerline, up to 82' AGL/192' MSL.
 Bush 134' from DER, 397' left of centerline, 5' AGL/123' MSL.



TAKEOFF MINIMUMS

Rwys 6L/R, 7L/R: NA by ATC.
 Rwys 24L/R, 25L/R: Standard with a minimum climb of 500' per NM to 11000.

NOTE: Chart not to scale.

SW-3, 07 FEB 2013 to 07 MAR 2013

FIXIT ONE DEPARTURE (RNAV)

LOS ANGELES, CALIFORNIA
LOS ANGELES INTL (LAX)