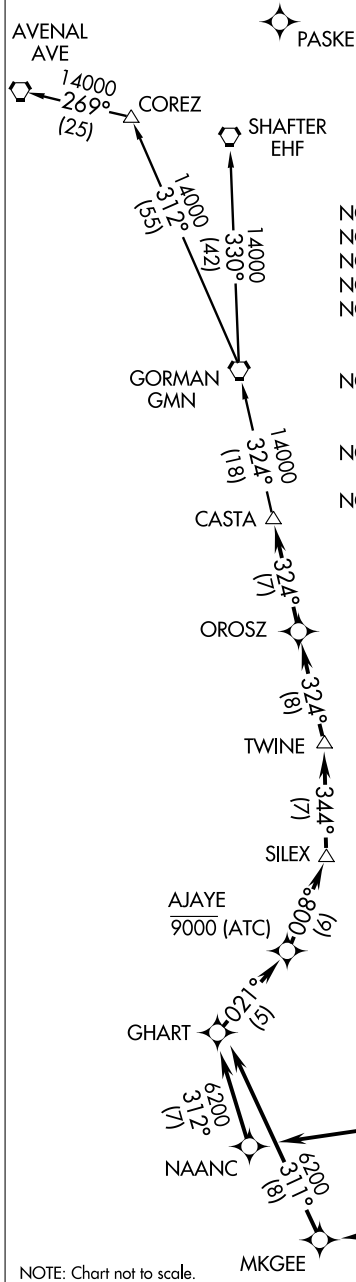


(CASTA2.CASTA) 12040

CASTA TWO DEPARTURE (RNAV)

SL-237 (FAA)

LOS ANGELES INTL (LAX)
LOS ANGELES, CALIFORNIA



TAKE-OFF MINIMUMS

Rwys 6L, 6R, 7L, 7R, NA - ATC.
Rwys 24L, 24R, 25L, 25R, Standard
with a minimum climb of 500' per NM
to 1800. ATC climb of 350' per NM
to 6200.

ATIS DEP	135.65
CLNC DEL	121.4 327.0
GND CON	N 121.65 327.0
S	121.75 327.0
LOS ANGELES TOWER	N 133.9 239.3
S	120.95 379.1
SOCAL DEP CON	124.3 363.2 (045°-224°)
	125.2 263.025 (225°-044°)

NOTE: DME/DME/IRU, or GPS required.

NOTE: RNAV 1

NOTE: Restricted to turbojet aircraft only.

NOTE: RADAR required.

NOTE: Some departures may be RADAR vectored to AJAYE, SILEX, TWINE or OROSZ.

NOTE: Maintain at or below 250 knots unless otherwise directed by ATC.

NOTE: Use the VENTURA DEPARTURE during the time periods of 2100-0700 local in lieu of the CASTA DEPARTURE.

NOTE: For non-GPS equipped aircraft: PMD DME must be operational for SHAFTER TRANSITION, and EHF DME must be operational for AVENAL TRANSITION.

TAKE-OFF OBSTACLE NOTES

Rwy 24L: Bush 957' from DER, 600' left of centerline, 29' AGL/148' MSL.

Multiple light poles beginning 274' from DER, 425' left of centerline, up to 12' AGL/120' MSL.

Antenna on pole 1358' from DER, 287' right of centerline, 25' AGL/144' MSL.

Bush 240' from DER, 508' right of centerline, 10' AGL/116' MSL.
Light pole 296' from DER, 322' right of centerline, 8' AGL/116' MSL.

Rwy 24R: Obstruction light on glideslope 213' from DER, 400' left of centerline, 34' AGL/151' MSL.

Rwy 25L: Bush 134' from DER, 397' left of centerline, 5' AGL/123' MSL.

Tree 2379' from DER, 777' left of centerline, 79' AGL/197' MSL.

Pole 2367' from DER, 764' left of centerline, 55' AGL/184' MSL.

Transmission line tower 2800' from DER, 992' left of centerline, 82' AGL/192' MSL.

Transmission tower 2856' from DER, 926' left of centerline, 82' AGL/192' MSL.

NOTE: Chart not to scale.

(NARRATIVE ON FOLLOWING PAGE)

CASTA TWO DEPARTURE (RNAV)

(CASTA2.CASTA) 12040

LOS ANGELES, CALIFORNIA
LOS ANGELES INTL (LAX)

SW-3, 07 FEB 2013 to 07 MAR 2013

SW-3, 07 FEB 2013 to 07 MAR 2013