

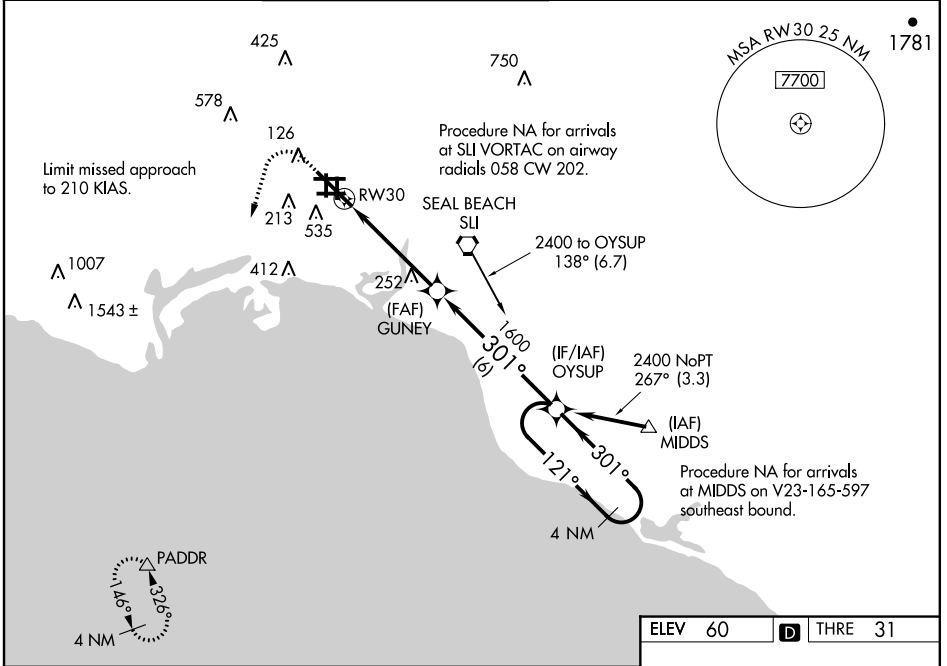
WAAS CH 99521 W30A	APP CRS 301°	Rwy Idg THRE Apt Elev 60	7415 31 60
--	------------------------	--	---------------------------------------

RNAV (GPS) Z RWY 30

LONG BEACH (DAUGHERTY FIELD) (LGB)

<p>▼ For uncompensated Baro-VNAV systems, LNAV/VNAV NA below 2°C (36°F) or above 43°C (109°F). DME/DME RNP -0.3 NA. Circling Rwy 34L NA at night.</p> <p>▲ When VGSI inop, Circling Rwy 16R NA at night.</p> <p>For inop MALS, increase LNAV Cat C/D visibility to 2½.</p>	<p>MALS</p>	<p>MISSED APPROACH: Climb to 820 then climbing left turn to 2700 direct PADDR and hold.</p>
--	-------------	---

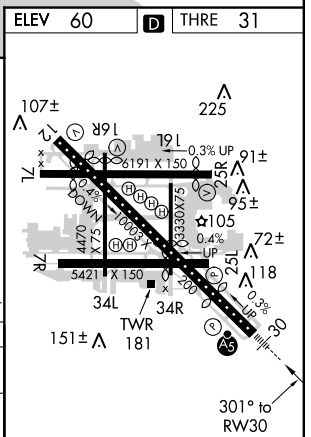
<p>ATIS 127.75</p>	<p>SOCAL APP CON 124.65 316.125</p>	<p>LONG BEACH TOWER* 120.5 257.6 (Rwy 12) 119.4 (CTAF) 0 257.6 (Rwy 30)</p>	<p>GND CON 133.0 257.6</p>	<p>CLNC DEL 118.15</p>	<p>UNICOM 122.95</p>
-------------------------------	--	--	---------------------------------------	-----------------------------------	---------------------------------



SW-3, 07 FEB 2013 to 07 MAR 2013

SW-3, 07 FEB 2013 to 07 MAR 2013

820	2700	PADDR	VGSI and RNAV glidepath not coincident (VGSI Angle 3.00/TCH 70).	4 NM Holding Pattern
*LNAV only.				
RW30		GUNNEY	OYSUP	121° → 2400
*2.3 NM to RW30		1600	301°	← 301°
2.3 NM		2.4 NM	6 NM	GS 3.00° TCH 58



CATEGORY	A	B	C	D
LPV DA		290/24	259 (300-½)	
LNAV/VNAV DA		657-1¾	626 (600-1¾)	
LNAV MDA	820/24 789 (800-½)	820/40 789 (800-¾)	820-1¾	789 (800-1¾)
CIRCLING	880-1 820 (900-1)	880-1¼ 820 (900-1¼)	880-2½ 820 (900-2½)	880-2¾ 820 (900-2¾)

THRE/CL Rwy 30
MIRL Rwy 7L-25R
REIL Rws 12, 25L, and 25R
HIRL Rws 7R-25L and 12-30