

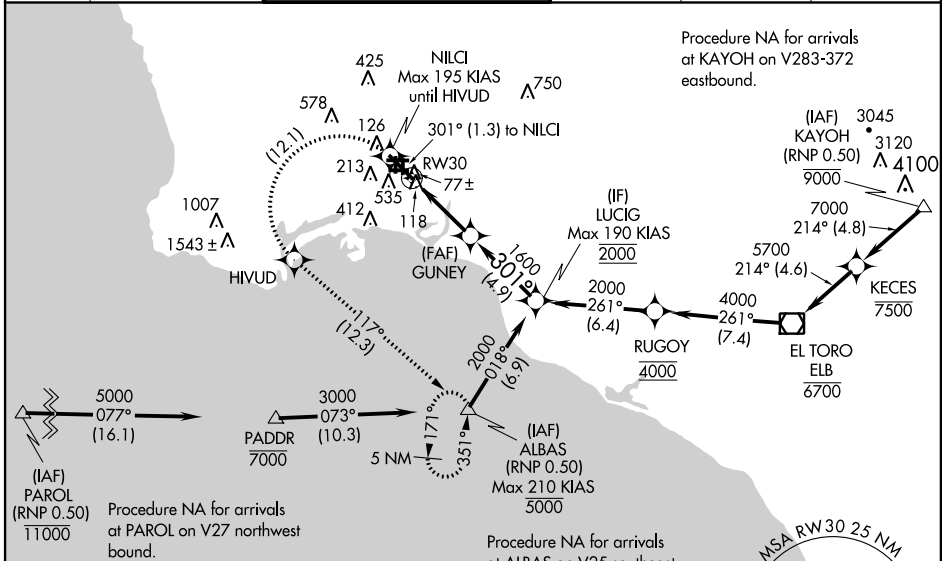
APP CRS	Rwy Idg	<b>7415</b>
<b>301°</b>	THRE	<b>31</b>
	Apt Elev	<b>60</b>

# RNAV (RNP) Y RWY 30

LONG BEACH (DAUGHERTY FIELD) (LGB)

<p><b>NA</b></p> <p>RF and GPS required. Procedure NA when control tower closed. For uncompensated Baro-VNAV systems, procedure NA below 2° C (36° F) or above 48° C (119° F). When VGSI inop, procedure NA at night. Missed approach requires RNP less than 1.00. For inop MALS, increase RNP 0.30 visibility to 1 1/4 mile.</p>	<p>MALS</p>	<p>MISSED APPROACH: Climb to 3000 on track 301° to NILCI, left turn to HIVUD, then track 117° to ALBAS and hold.</p>

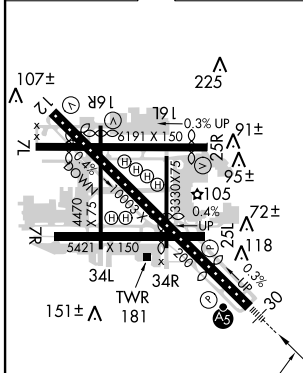
ATIS <b>127.75</b>	SOCAL APP CON <b>124.65 316.125</b>	LONG BEACH TOWER* <b>120.5 257.6</b> (Rwy 12) <b>119.4</b> (CTAF) <b>0 257.6</b> (Rwy 30)	GND CON <b>133.0 257.6</b>	CLNC DEL <b>118.15</b>	UNICOM <b>122.95</b>
-----------------------	--	---	-------------------------------	---------------------------	-------------------------



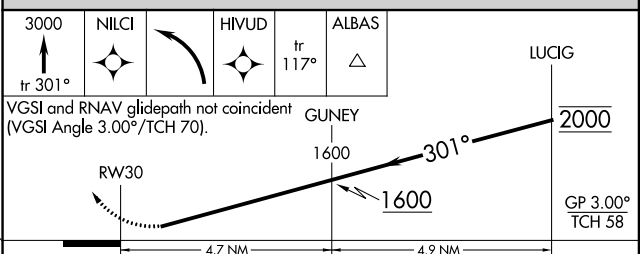
SW-3, 07 FEB 2013 to 07 MAR 2013

SW-3, 07 FEB 2013 to 07 MAR 2013

ELEV 60	<b>D</b>	THRE 31
---------	----------	---------



THRE/CL Rwy 30  
MIRL Rwy 7L-25R  
REIL Rws 12, 25L, and 25R  
HIRL Rws 7R-25L and 12-30



CATEGORY	A	B	C	D
RNP 0.30 DA	428/45 397 (400-7/8)			

**AUTHORIZATION REQUIRED**