

APP CRS	Rwy Idg	8652
121°	THRE	53
	Apt Elev	60

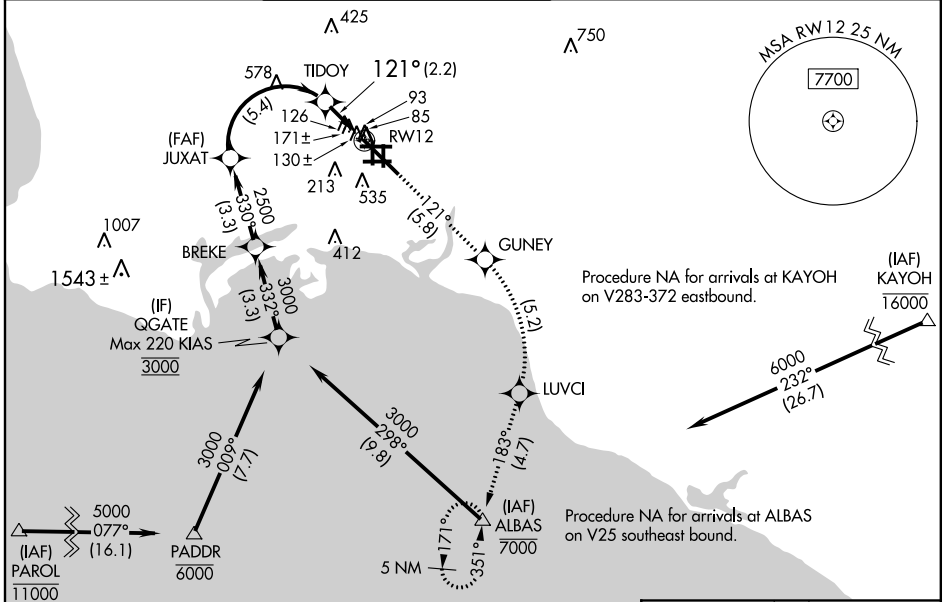
RNAV (RNP) RWY 12

LONG BEACH (DAUGHERTY FIELD) (LGB)

RF and GPS required. Procedure NA when control tower closed. For uncompensated Baro-VNAV systems, procedure NA below 2°C (36°F) or above 49°C (120°F). When VGSi inop, procedure NA at night.

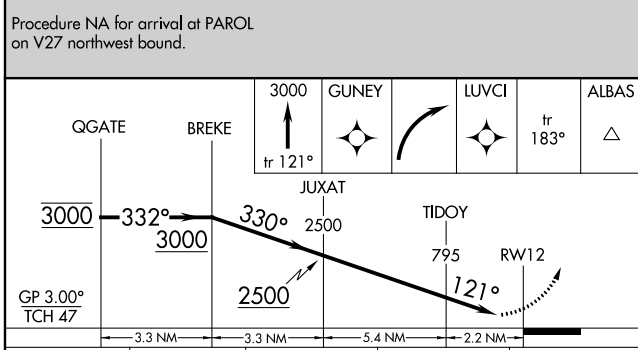
MISSED APPROACH: Climb to 3000 on track 121° to GUNEY, right turn to LUVCI, then track 183° to ALBAS and hold.

ATIS 127.75	SOCAL APP CON 124.65 316.125	LONG BEACH TOWER* 120.5 257.6 (Rwy 12) 119.4 (CTAF) 0 257.6 (Rwy 30)	GND CON 133.0 257.6	CLNC DEL 118.15	UNICOM 122.95
-----------------------	--	---	-------------------------------	---------------------------	-------------------------

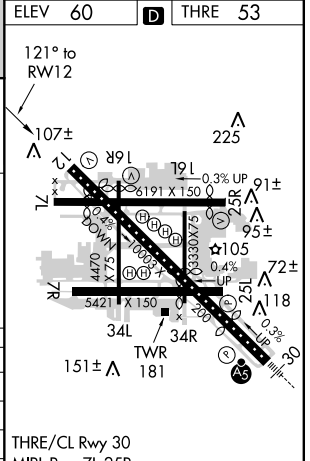


SW-3, 07 FEB 2013 to 07 MAR 2013

SW-3, 07 FEB 2013 to 07 MAR 2013



CATEGORY	A	B	C	D
RNP 0.13 DA		378-1 ¹ / ₈	325 (400-1 ¹ / ₈)	
RNP 0.21 DA		428-1 ¹ / ₄	375 (400-1 ¹ / ₄)	
RNP 0.30 DA		478-1 ³ / ₈	425 (500-1 ³ / ₈)	



AUTHORIZATION REQUIRED

THRE/CL Rwy 30
MIRL Rwy 7L-25R
REIL Rws 12, 25L, and 25R
HIRL Rws 7R-25L and 12-30