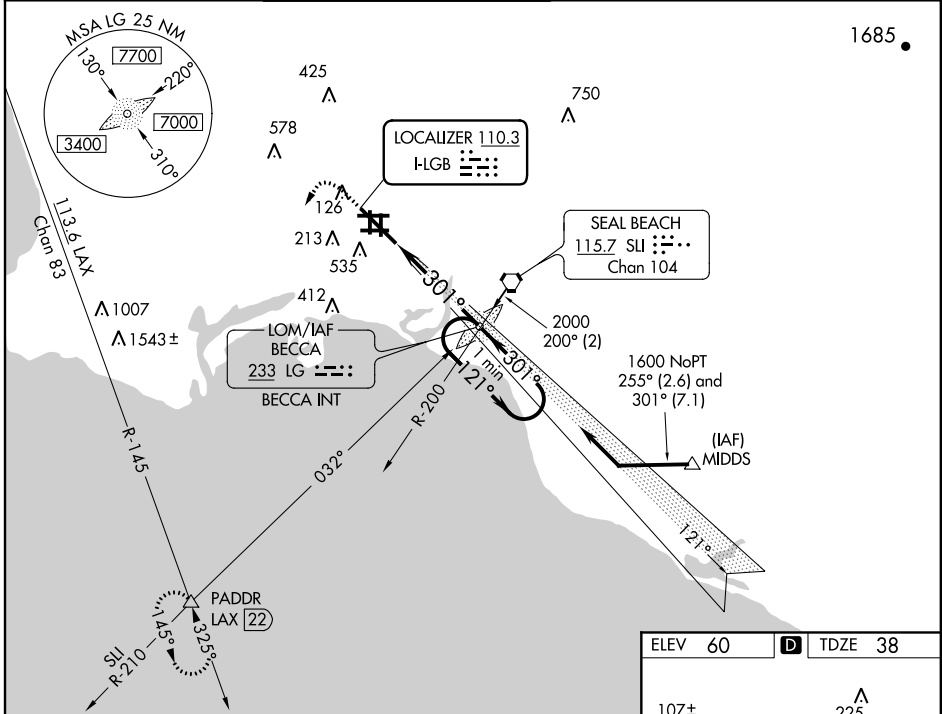


| | | | |
|--------------|-------------|----------|-----------|
| LOC I-LGB | APP CRS | Rwy Idg | 7415 |
| 110.3 | 301° | TDZE | 38 |
| | | Apt Elev | 60 |

ILS or LOC RWY 30

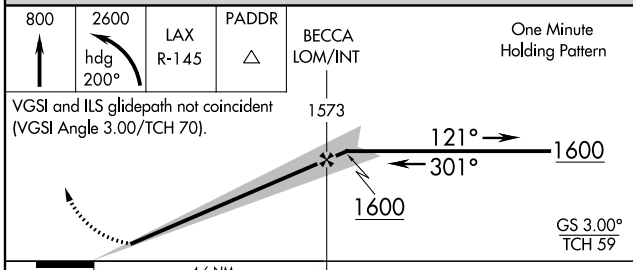
LONG BEACH (DAUGHERTY FIELD) (LGB)

| | | | | | |
|--|--|---|-------------------------------|---------------------------|-------------------------|
| MALS R MISSED APPROACH: Climb to 800 then climbing left turn to 2600 via heading 200° and LAX R-145 to PADDR INT/LAX 22 DME and hold. | | | | | |
| ATIS 127.75 | SOCAL APP CON 124.65 316.125 | LONG BEACH TOWER* 120.5 257.6 (Rwy 12) 119.4 (CTAF) 0 257.6 (Rwy 30) | GND CON 133.0 257.6 | CLNC DEL 118.15 | UNICOM 122.95 |



SW-3, 07 FEB 2013 to 07 MAR 2013

SW-3, 07 FEB 2013 to 07 MAR 2013



| | | |
|--|------|---------------------|
| ELEV 60 | D | TDZE 38 |
| | | |
| TDZ/CL Rwy 30 301° 4.6 NM from FAF MIRL Rwy 7L-25R REIL Rwy 12, 25L, and 25R HIRL Rwy 7R-25L and 12-30 FAF to MAP 4.6 NM | | |
| Knots | 60 | 90 120 150 180 |
| Min:Seq | 4:36 | 3:04 2:18 1:50 1:32 |