

VOR/DME LNR <b>112.8</b> Chan <b>75</b>	APP CRS <b>203°</b>	Rwy Idg TDZE Apt Elev <b>N/A</b> <b>N/A</b> <b>717</b>
---	------------------------	---

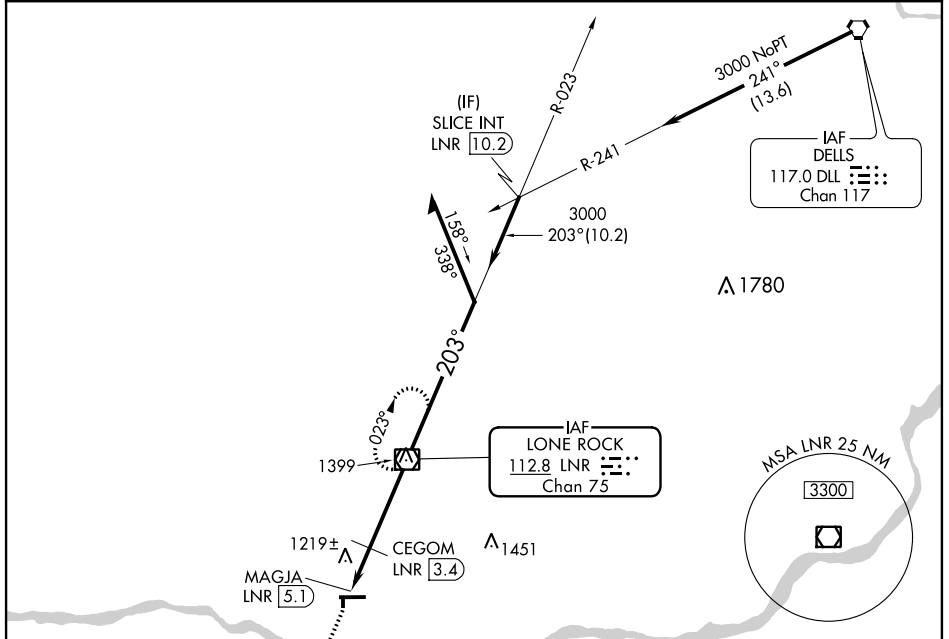
**⚠** When local altimeter setting not received, use Boscobel altimeter setting and increase all MDAs 60 feet, and all visibilities ¼ mile.

**MISSED APPROACH:** Climb to 3000 then left turn direct LNR VOR/DME and hold.

ASOS  
**119.425**

MADISON APP CON ★  
**135.45 343.7**

UNICOM  
**123.0 (CTAF) 0**

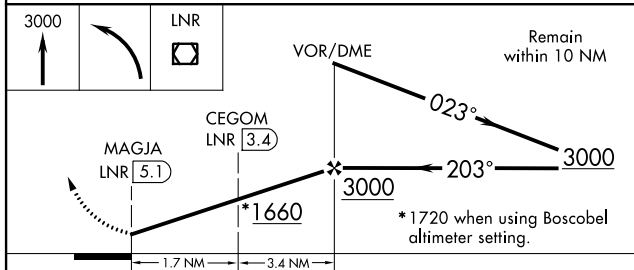


EC-3, 07 FEB 2013 to 07 MAR 2013

EC-3, 07 FEB 2013 to 07 MAR 2013

ELEV 717

Inset diagram details: 203° 5.1 NM from FAF. Runway 5000 X 75. Altitudes: 81, 36, 1850 X 60.



CATEGORY	A	B	C	D
CIRCLING	1660-1¼	943 (1000-1¼)	1660-2¾ 943 (1000-2¾)	NA
CEGOM FIX MINIMUMS				
CIRCLING	1520-1 803 (900-1)	1520-1¼ 803 (900-1¼)	1520-2¼ 803 (900-2¼)	NA

REIL Rwy 27 0	MRL Rwys 9-27 and 18-36 0				
FAF to MAP 5.1 NM					
Knots	60	90	120	150	180
Min:Sec	5:06	3:24	2:33	2:02	1:42