

LONE ROCK, WISCONSIN

AL-235 (FAA)

WAAS CH 78206 W09A	APP CRS 090°	Rwy ldg TDZE Apt Elev	5000 717 717
--	------------------------	-----------------------------	---

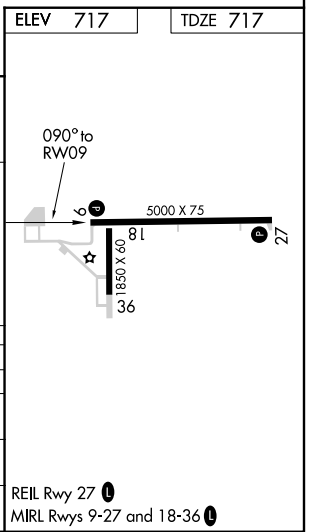
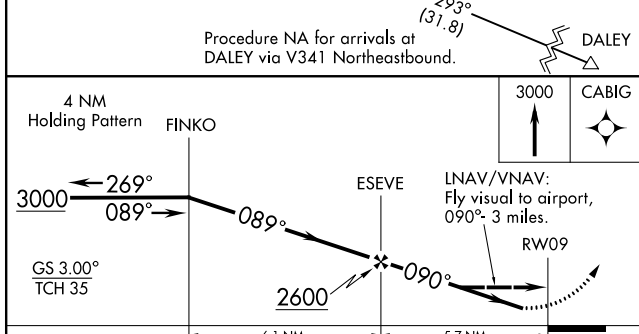
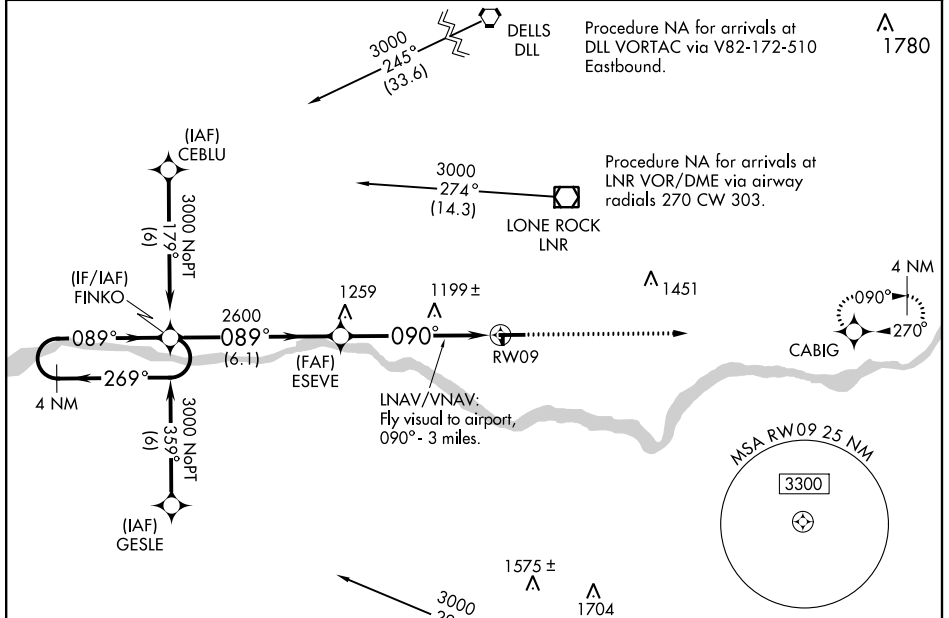
RNAV (GPS) RWY 9

LONE ROCK/ TRI-COUNTY RGNL (LNR)

▼ Visibility reduction by helicopters NA. DME/DME RNP-0.3 NA.
 ▲ For uncompensated Baro-VNAV systems, LNAV/VNAV NA below -16°C (4°F) or above 54°C (130°F). When local altimeter setting not received, use Boscobel altimeter setting and increase all DAs/MDAs 60 feet, and all visibilities ¼ mile. Baro-VNAV NA when using Boscobel altimeter setting.

MISSED APPROACH: Climb to 3000 direct CABIG and hold.

ASOS 119.425	MADISON APP CON ★ 135.45 343.7	UNICOM 123.0 (CTAF) ①
------------------------	--	---------------------------------



CATEGORY	A	B	C	D
LPV DA	994-1 277 (300-1)			NA
LNNAV/VNAV DA	1659-2	942 (1000-2)	1659-2¾ 942 (1000-2¾)	NA
LNNAV MDA	1460-1 743 (800-1)	1460-1¼ 743 (800-1¼)	1460-2¼ 743 (800-2¼)	NA
CIRCLING	1520-1 803 (900-1)	1520-1¼ 803 (900-1¼)	1520-2¼ 803 (900-2¼)	NA

EC-3, 07 FEB 2013 to 07 MAR 2013

EC-3, 07 FEB 2013 to 07 MAR 2013

LONE ROCK, WISCONSIN
Orig 12152

43°13'N-90°11'W

LONE ROCK/ TRI-COUNTY RGNL (LNR) RNAV (GPS) RWY 9