

LONE ROCK, WISCONSIN

AL-235 (FAA)

WAAS CH 69506 W27A	APP CRS 270°	Rwy Idg TDZE Apt Elev	5000 717 717
----------------------------------------	------------------------	-----------------------------	-----------------------------------------

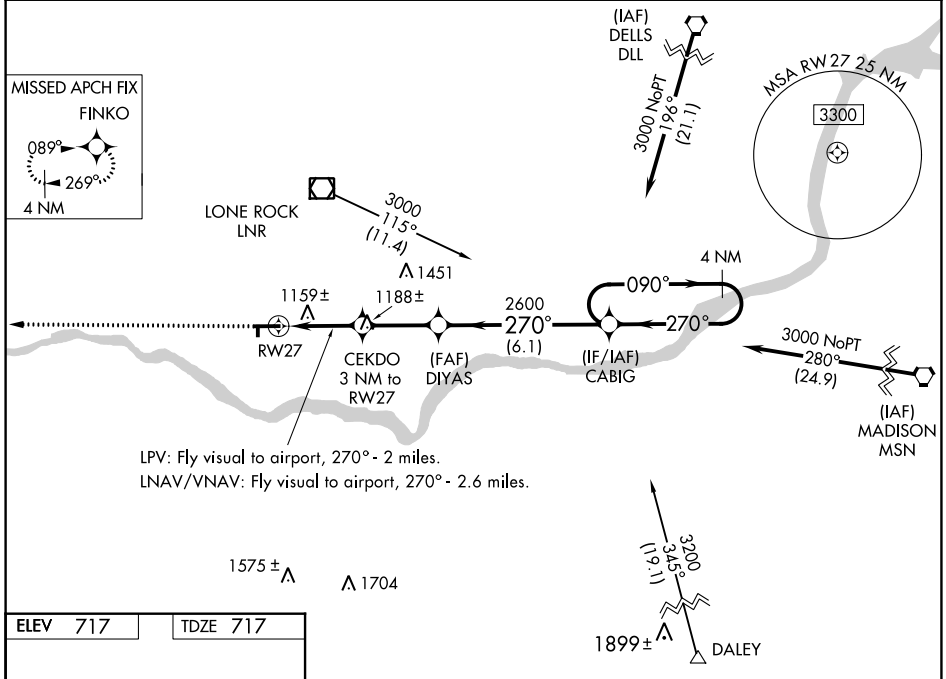
RNAV (GPS) RWY 27

LONE ROCK/ TRI-COUNTY RGNL (LNR)

Visibility reduction by helicopters NA. DME/DME RNP-0.3 NA.
 For uncompensated Baro-VNAV systems, LNAV/VNAV NA below -1.6°C (4°F) or above 54°C (130°F). When local altimeter setting not received, use Boscobel altimeter setting and increase all DAs/MDAs 60 feet, and all visibilities ¼ mile. Baro-VNAV NA when using Boscobel altimeter setting.

MISSED APPROACH: Climb to 3000 direct FINKO and hold.

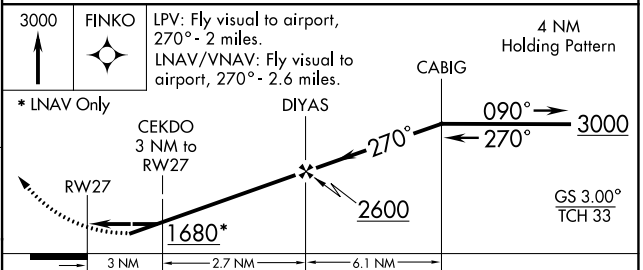
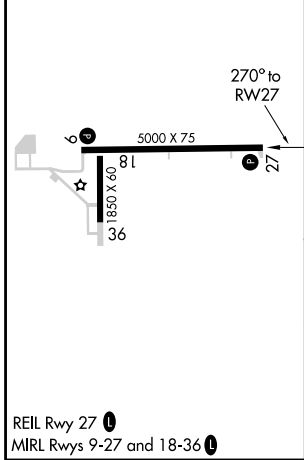
ASOS 119.425	MADISON APP CON * 135.45 343.7	UNICOM 123.0 (CTAF) 0
------------------------	------------------------------------------	----------------------------------------



EC-3, 07 FEB 2013 to 07 MAR 2013

EC-3, 07 FEB 2013 to 07 MAR 2013

ELEV 717	TDZE 717
----------	----------



CATEGORY	A	B	C	D
LPV DA	1375-2 658 (700-2)			NA
LNAV/VNAV DA	1584-2	867 (900-2)	1584-2½ 867 (900-2½)	NA
LNAV MDA	1420-1	703 (800-1)	1420-2 703 (800-2)	NA
CIRCLING	1520-1 803 (900-1)	1520-1¼ 803 (900-1¼)	1520-2¼ 803 (900-2¼)	NA

LONE ROCK, WISCONSIN
 Orig 12152

43° 13'N-90° 11'W

RNAV (GPS) RWY 27

LONE ROCK/ TRI-COUNTY RGNL (LNR)