

WAAS CH <b>70611</b> <b>W04B</b>	APP CRS <b>044°</b>	Rwy Idg THRE <b>200</b> Apt Elev <b>266</b>
--	------------------------	---

LITTLE ROCK/  
BILL AND HILLARY CLINTON NATIONAL/ADAMS FIELD (LIT)

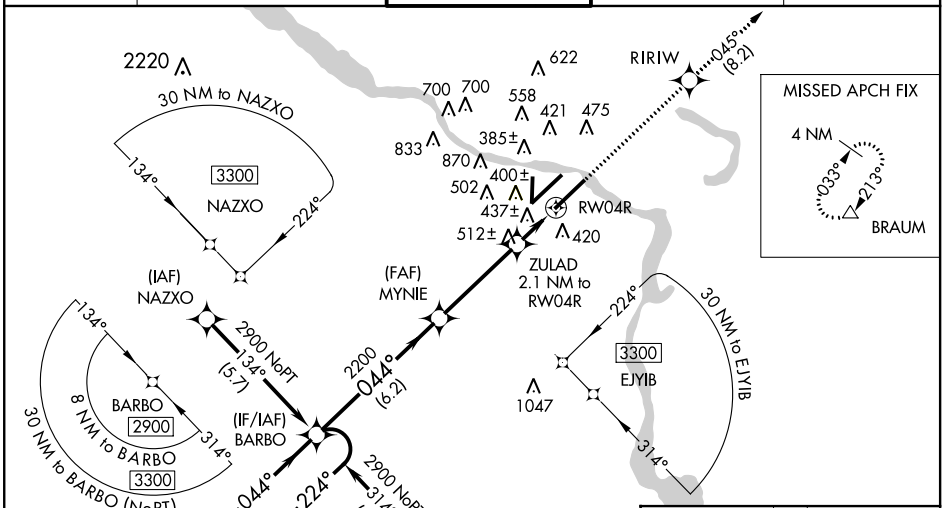
# RNAV (GPS) RWY 4R

**⚠** For uncompensated Baro-VNAV systems, LNAV/VNAV NA below -15°C (5°F) or above 48°C (118°F). DME/DME RNP-0.3 NA. Visibility reduction by helicopters NA. When local altimeter setting not received, use Stuttgart altimeter setting and increase all DA 82 feet and ASR all MDA 100 feet; increase LPV all Cats visibility ¼ mile, increase LNAV/VNAV all Cats visibility ¼ mile, increase LNAV Cat C and D visibility ¼ mile, and increase Circling Cat C visibility ¼ mile. Baro-VNAV and VDP NA when using Stuttgart altimeter setting. For inoperative MALSRS, increase LNAV Cat A and B visibility to RVR 5000. For inoperative MALSRS, when using Stuttgart altimeter setting, increase LPV all Cats visibility to 1½ miles, increase LNAV Cat A and B visibility to RVR 5000. Simultaneous approach authorized with ILS or LOC Rwy 4L. LNAV procedure NA during simultaneous operations. Use of FD or AP providing RNAV track guidance required during simultaneous operations.

**MALSRS**

**MISSED APPROACH:**  
Climb to 2900 on track RIRIW and on track 045° to BRAUM and hold.

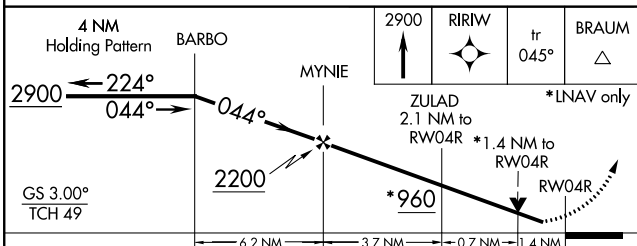
ATIS <b>125.65</b>	LITTLE ROCK APP CON <b>135.4 291.775 353.6</b>	ADAMS TOWER <b>118.7 257.8</b>	GND CON <b>121.9 339.8</b>	CLNC DEL <b>118.95</b>
-----------------------	---	-----------------------------------	-------------------------------	---------------------------



SC-1, 07 FEB 2013 to 07 MAR 2013

SC-1, 07 FEB 2013 to 07 MAR 2013

ELEV 266	THRE 260
----------	----------



044° to RWY 4R

CATEGORY	A	B	C	D
LPV DA	574/40 314 (400-¾)			
LNAV/VNAV DA	728/60 468 (500-1¼)			
LNAV MDA	760/40	500 (500-¾)	760/50	500 (500-1)
CIRCLING	800-1	534 (600-1)	940-2 674 (700-2)	1180-3 914 (1000-3)

# RNAV (GPS) RWY 4R