

WAAS CH 90411 W04A	APP CRS 044°	Rwy Idg 7976	254
		THRE	254
		Apt Elev	266

LITTLE ROCK/

RNAV (GPS) RWY 4L

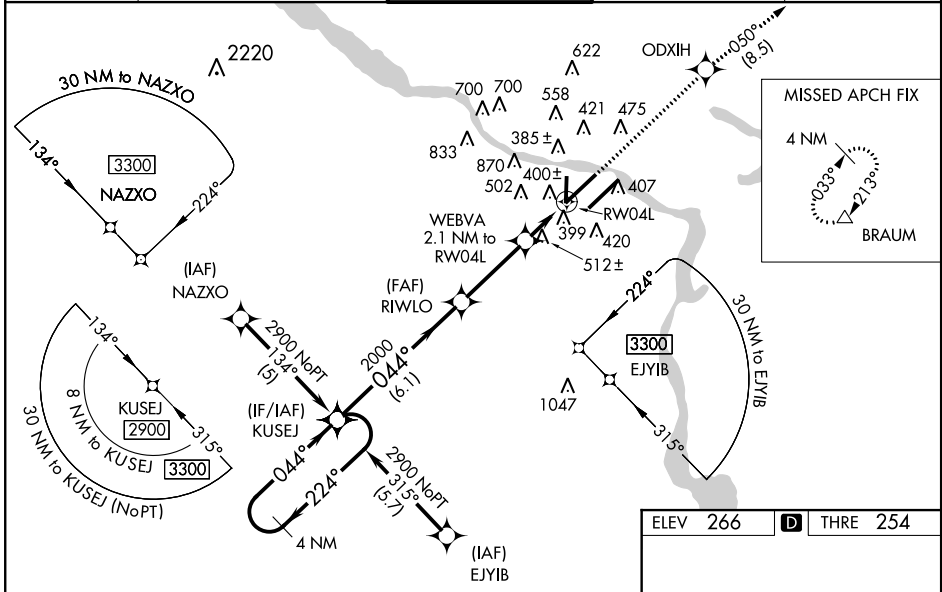
BILL AND HILLARY CLINTON NATIONAL/ADAMS FIELD (LIT)

⚠ For uncompensated Baro-VNAV systems, LNAV/VNAV NA below -15°C (5°F) or above 48°C (118°F). DME/DME RNP-0.3 NA. Visibility reduction by helicopters NA. When local altimeter setting not received, use Stuttgart altimeter setting and increase all DA 82 feet and all MDA 100 feet; increase LNAV/VNAV all Cats visibility ¼ mile, increase LNAV Cat C and D visibility ¼ mile, and increase Circling Cat C visibility ¼ mile. Baro-VNAV and VDP NA when using Stuttgart altimeter setting. For inoperative MALS/R increase LNAV Cat A and B visibility to RVR 5000. For inoperative MALS/R when using Stuttgart altimeter setting, increase LPV all Cats visibility to RVR 6000, LNAV Cat A and B visibility to RVR 5000. Simultaneous approach authorized with ILS or LOC Rwy 4R. LNAV procedure NA during simultaneous operations. Use of FD or AP providing RNAV track guidance required during simultaneous operations.

MALS/R

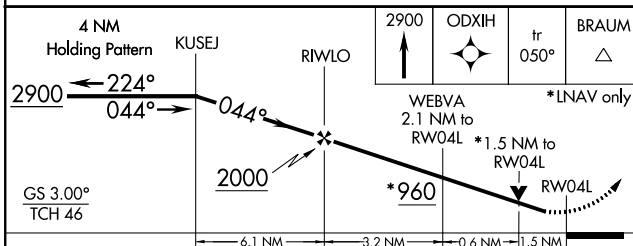
MISSED APPROACH:
Climb to 2900 direct ODXIH and on track 050° to BRAUM and hold.

ATIS 125.65	LITTLE ROCK APP CON 135.4 291.775 353.6	ADAMS TOWER 118.7 257.8	GND CON 121.9 339.8	CLNC DEL 118.95
-----------------------	---	-----------------------------------	-------------------------------	---------------------------



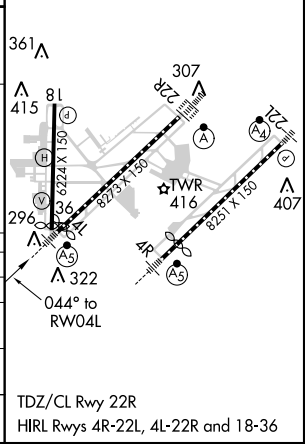
SC-1, 07 FEB 2013 to 07 MAR 2013

SC-1, 07 FEB 2013 to 07 MAR 2013



ELEV 266	D THRE 254
----------	-------------------

CATEGORY	A	B	C	D
LPV DA		540/40	286 (300-¾)	
LNAV/VNAV DA		820-1½	566 (600-1½)	
LNAV MDA	780/40	526 (600-¾)	780/55	526 (600-1¼)
CIRCLING	800-1	534 (600-1)	940-2 674 (700-2)	1180-3 914 (1000-3)



RNAV (GPS) RWY 4L

TDZ/CL Rwy 22R
HRL Rwy 4R-22L, 4L-22R and 18-36