

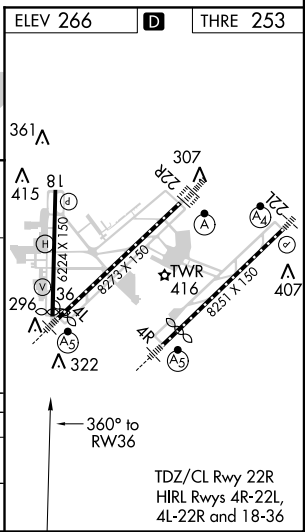
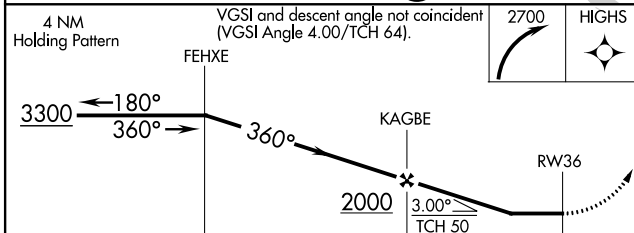
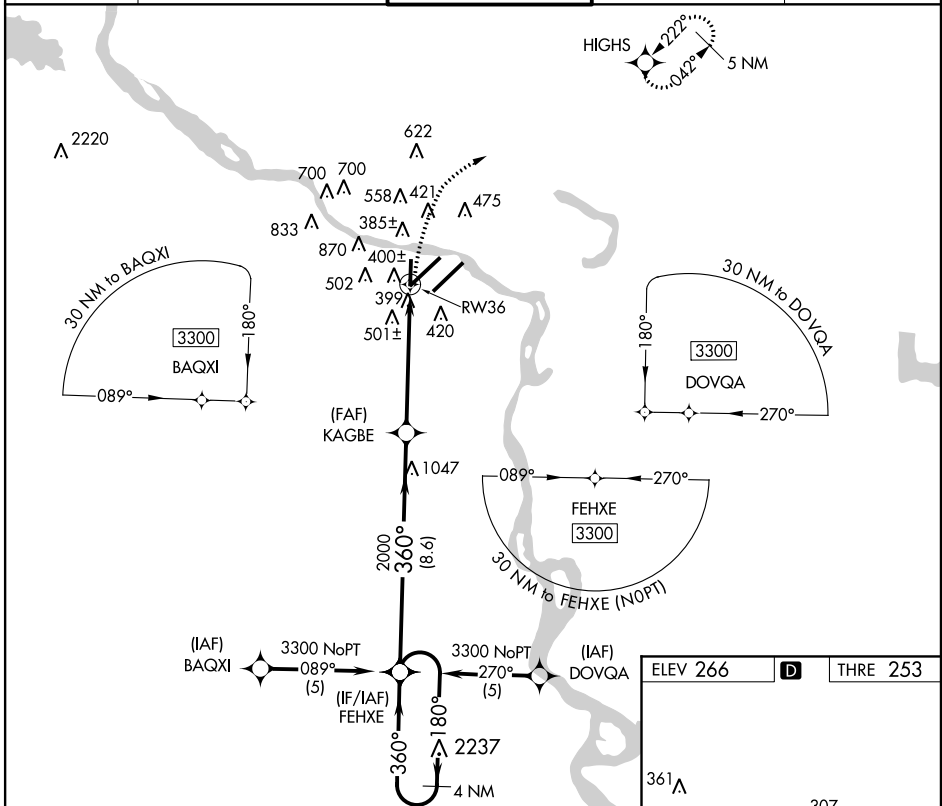
APP CRS	Rwy Idg	<b>6124</b>
<b>360°</b>	THRE	<b>253</b>
	Apt Elev	<b>266</b>

LITTLE ROCK/  
BILL AND HILLARY CLINTON NATIONAL/ADAMS FIELD (LIT) **RNAV (GPS) RWY 36**

**▼** DME/DME RNP 0.3 NA. Visibility reduction by helicopters NA. When local altimeter setting not received, use Stuttgart altimeters setting and increase all MDA 100 feet. Increase LNAV Cat C/D and Circling Cat C visibility ¼ mile.  
**▲** ASR

MISSED APPROACH: Climbing right turn to 2700 direct HIGHS and hold.

ATIS	LITTLE ROCK APP CON	ADAMS TOWER	GND CON	CLNC DEL
<b>125.65</b>	<b>135.4 291.775 353.6</b>	<b>118.7 257.8</b>	<b>121.9 339.8</b>	<b>118.95</b>



CATEGORY	A	B	C	D
LNAV MDA	760-1	507 (500-1)	760-1½	507 (500-1½)
CIRCLING	800-1	534 (600-1)	940-2 674 (700-1)	1180-3 914 (1000-3)

SC-1, 07 FEB 2013 to 07 MAR 2013

SC-1, 07 FEB 2013 to 07 MAR 2013