


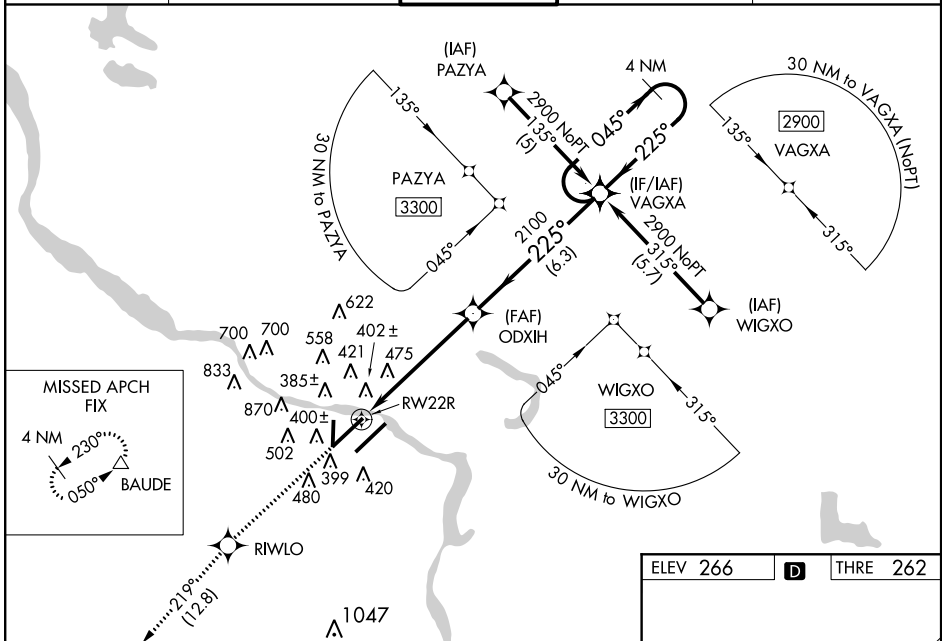
WAAS CH 93811 W22B	APP CRS 225°	Rwy Idg 8273 THRE 262 Apt Elev 266
--	------------------------	--

LITTLE ROCK/
BILL AND HILLARY CLINTON NATIONAL/ADAMS FIELD (LIT) **RNAV (GPS) RWY 22R**

⚠ For uncompensated Baro-VNAV systems, LNAV/VNAV NA below -1.5°C (5°F) or above 48°C (118°F). DME/DME RNP-0.3 NA. When local altimeter setting not received, use Stuttgart altimeter setting and increase all DA 82 feet and all MDA 100 feet; increase LNAV/VNAV all Cats visibility ½ mile, LNAV Cats C and D and Circling Cat C visibility ¼ mile. Baro-VNAV and VDP NA when using Stuttgart altimeter setting. For inoperative ALSF-2, when using Stuttgart altimeter setting, increase LPV all Cats visibility to RVR 5000.

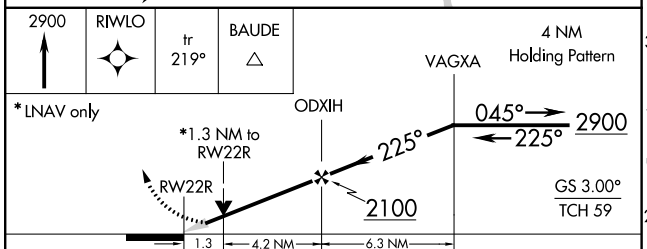
ALSF 
MISSED APPROACH: Climb to 2900 direct RIWLO and on track 219° to BAUDE and hold.

ATIS 125.65	LITTLE ROCK APP CON 135.4 291.775 353.6	ADAMS TOWER 118.7 257.8	GND CON 121.9 339.8	CLNC DEL 118.95
-----------------------	---	-----------------------------------	-------------------------------	---------------------------



SC-1, 07 FEB 2013 to 07 MAR 2013

SC-1, 07 FEB 2013 to 07 MAR 2013



CATEGORY	A	B	C	D
LPV DA		462/24	200 (200-½)	
LNAV/VNAV DA		727/50	465 (500-1)	
LNAV MDA	740/24	478 (500-½)	740/50	478 (500-1)
CIRCLING	800-1	534 (600-1)	940-2 674 (700-2)	1180-3 914 (1000-3)

