

WAAS CH <b>42811</b> <b>W22A</b>	APP CRS <b>225°</b>	Rwy Idg THRE Apt Elev	<b>8250</b> <b>259</b> <b>266</b>
--	------------------------	-----------------------------	---

LITTLE ROCK/  
BILL AND HILLARY CLINTON NATIONAL/ADAMS FIELD (LIT)

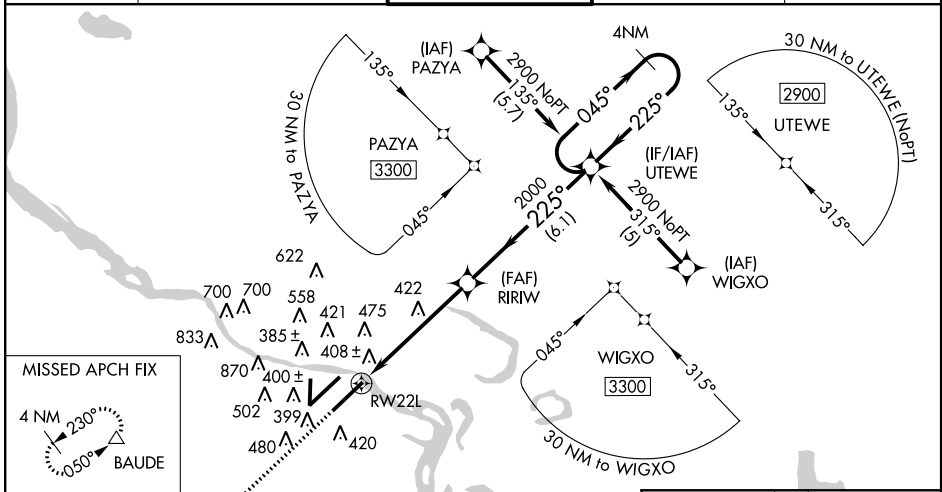
# RNAV (GPS) RWY 22L

**▲** For uncompensated Baro-VNAV systems, LNAV/VNAV NA below -15°C (5°F) or above 48°C (118°F). DME/DME RNP-0.3 NA. Visibility reduction by helicopters NA. When local altimeter setting not received, use Stuttgart altimeter setting and increase all DA 82 feet and all MDA 100 feet; and increase LPV all Cats, LNAV/VNAV all Cats, LNAV Cat C and Circling Cat C visibility 1/4 mile. Increase LNAV Cat D visibility 1/2 mile. Baro-VNAV and VDP NA when using Stuttgart altimeter setting. Inoperative table does not apply to LPV, LNAV/VNAV or LNAV Cat C and D. For inoperative MALSF increase LNAV Cat A and B visibility to RVR 5000. When using Stuttgart altimeter setting, inoperative table does not apply to LPV, LNAV/VNAV or LNAV Cat C and D. For inoperative MALSF, when using Stuttgart altimeter setting, increase LNAV Cat A and B visibility to RVR 5000. Simultaneous approach authorized with ILS or LOC Rwy 22R, ILS Rwy 22R (Cat III), ILS Rwy 22R (Cat III). LNAV procedure NA during simultaneous operations. Use of FD or AP providing RNAV track guidance required during simultaneous operations.

**MALSF**

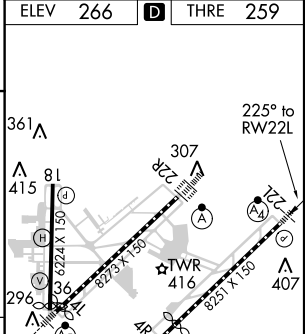
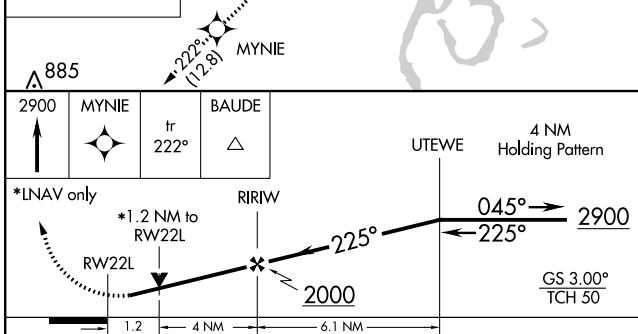
**MISSED APPROACH:**  
Climb to 2900 direct MYNIE and on track 222° to BAUDE and hold.

ATIS <b>125.65</b>	LITTLE ROCK APP CON <b>135.4 291.775 353.6</b>	ADAMS TOWER <b>118.7 257.8</b>	GND CON <b>121.9 339.8</b>	CLNC DEL <b>118.95</b>
-----------------------	---	-----------------------------------	-------------------------------	---------------------------



SC-1, 07 FEB 2013 to 07 MAR 2013

SC-1, 07 FEB 2013 to 07 MAR 2013



ELEV 266	THRE 259			
2900	MYNIE	tr 222°	BAUDE	
*LNAV only				
RW22L		RIRIW	UTEWE	
*1.2 NM to RW22L		045° →	2900	
		← 225°		
		2000	GS 3.00°	
			TCH 50	
CATEGORY	A	B	C	D
LPV DA	542/50		283 (300-1)	
LNAV/VNAV DA	773-1 3/4		514 (600-1 1/4)	
LNAV MDA	680/40 421 (500-3/4)		680/60 421 (500-1 1/4)	
CIRCLING	800-1 534 (600-1)		940-2 674 (700-2) 1180-3 914 (1000-3)	

TDZ/CL Rwy 22R	4R-22L, 4L-22R and 18-36
----------------	--------------------------

# RNAV (GPS) RWY 22L