


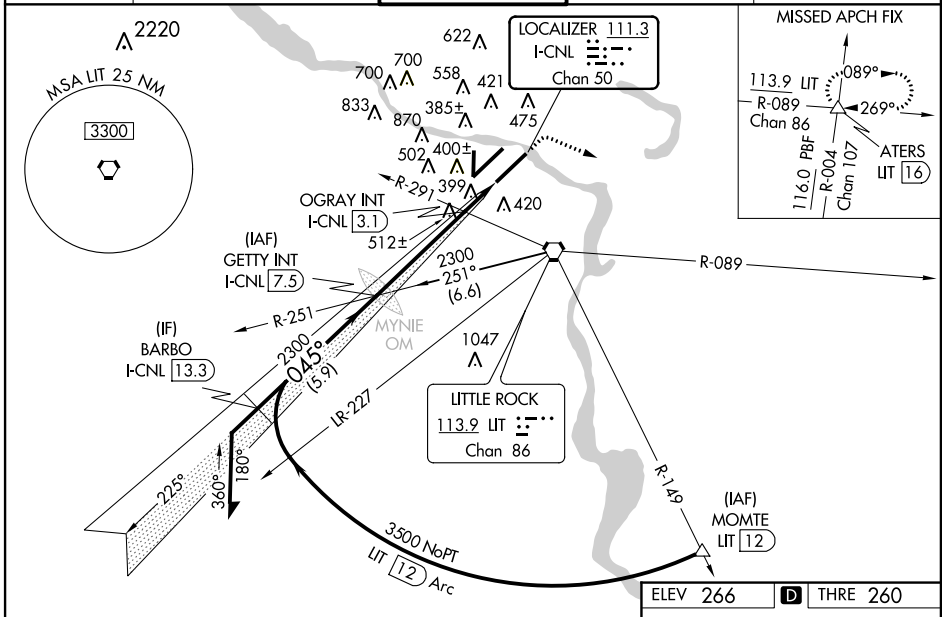
LOC/DME I-CNL <b>111.3</b> Chan 50	APP CRS <b>045°</b>	Rwy Idg THRE Apt Elev <b>7200</b> <b>260</b> <b>266</b>
--	------------------------	--

LITTLE ROCK/  
BILL AND HILLARY CLINTON NATIONAL/ADAMS FIELD (LIT)  
**ILS or LOC RWY 4R**

**⚠** Visibility reduction by helicopters NA. Inoperative table does not apply to S-ILS 4R. For inoperative MALSR, increase S-LOC 4R Cat A/B visibility to RVR 5000. When local altimeter setting not received, use Stuttgart altimeter setting and increase all DA 82 feet, all MDA 100 feet. Increase S-LOC Cat C and D visibility to 1½ miles, and Circling Cat C visibility to 2¼ miles. OGRAY FIX MINIMUMS: Increase S-LOC Cat C and D visibility to 1¾ miles, and Circling Cat C visibility to 2¼ miles. Simultaneous approach authorized with Rwy 4L.

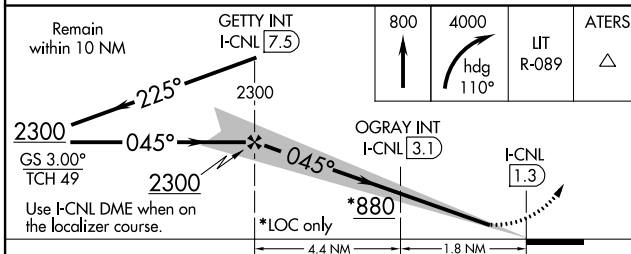
**MALSRL**  
  
MISSED APPROACH: Climb to 800 then climbing right turn to 4000 via heading 110° and LIT R-089 to ATERS INT/LIT 16 DME and hold.

ATIS <b>125.65</b>	LITTLE ROCK APP CON <b>135.4 291.775 353.6</b>	ADAMS TOWER <b>118.7 257.8</b>	GND CON <b>121.9 339.8</b>	CLNC DEL <b>118.95</b>
-----------------------	---	-----------------------------------	-------------------------------	---------------------------



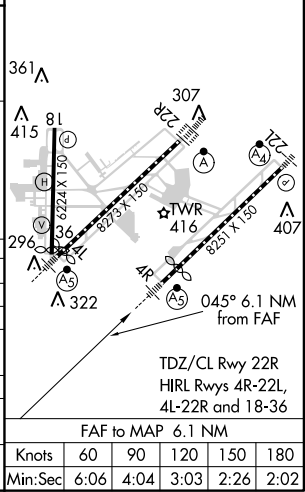
SC-1, 07 FEB 2013 to 07 MAR 2013

SC-1, 07 FEB 2013 to 07 MAR 2013



ELEV 266	<b>D</b> THRE 260
----------	-------------------

CATEGORY	A	B	C	D
S-ILS 4R	510/40 250 (300-¾)			
S-LOC 4R	880/40	620 (700-¾)	880-1¾	620 (700-1½)
CIRCLING	880-1	614 (700-1)	940-2	1180-3
OGRAY FIX MINIMUMS				
S-LOC 4R	780/40	520 (600-¾)	780/55	520 (600-1¼)
CIRCLING	800-1	534 (600-1)	940-2	1180-3
			674 (700-2)	914 (1000-3)



FAF to MAP 6.1 NM					
Knots	60	90	120	150	180
Min:Sec	6:06	4:04	3:03	2:26	2:02