

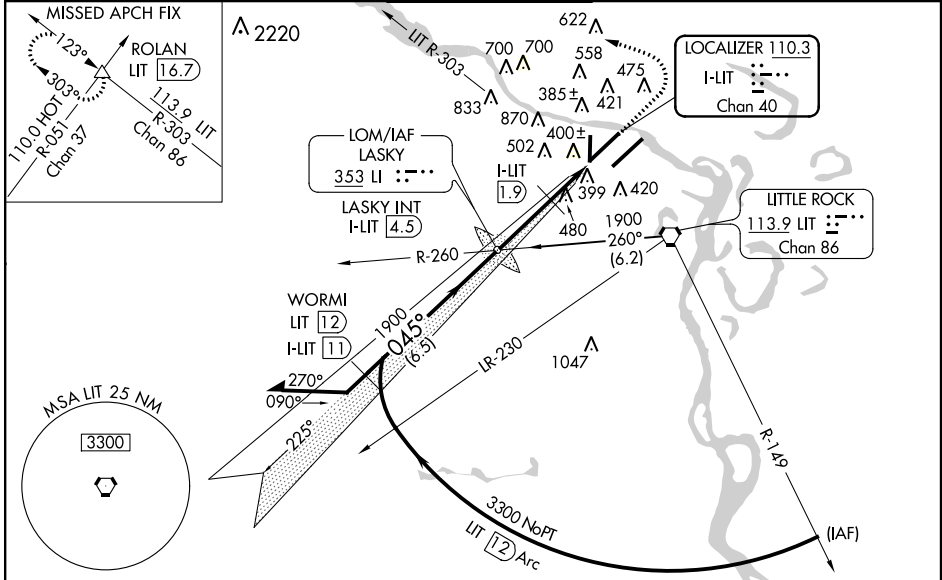
LOC/DME I-LIT 110.3 Chan 40	APP CRS 045°	Rwy Idg 7976 THRE 254 Apt Elev 266
--	------------------------	--

LITTLE ROCK/
BILL AND HILLARY CLINTON NATIONAL/ADAMS FIELD (LIT)
ILS or LOC RWY 4L

ASR
Inoperative table does not apply to S-ILS 4L all Cats. For Inoperative MALS/R, increase S-LOC 4L Cats A and B visibility to RVR 5000. Glide slope unusable below 650 for coupled approaches. When local altimeter setting not received, use Stuttgart altimeter setting and increase all DA 82 feet, all MDA 100 feet. Increase S-ILS all Cats visibility to RVR 5000, S-LOC Cat C and D visibility to 1 1/2 miles, and Circling Cat C visibility to 2 1/4 miles. DME MINIMUMS: Increase S-LOC Cat C and D visibility to 1 1/4 miles, and Circ Cat C visibility to 2 1/4 miles. Simultaneous approach authorized with Rwy 4R.

MALS/R
MISSED APPROACH:
Climb to 1500 then climbing left turn to 3500 via LIT R-303 to ROLAN Int and hold.

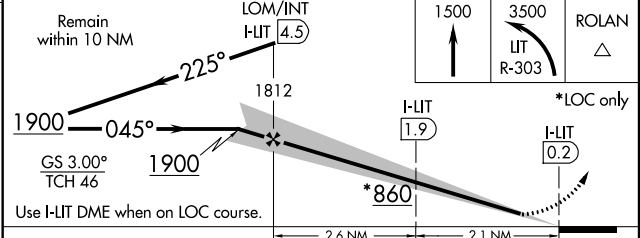
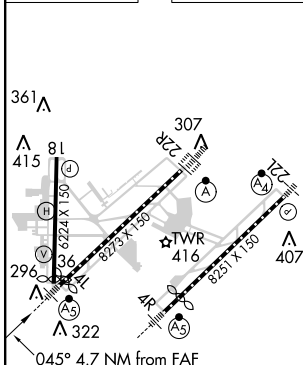
ATIS 125.65	LITTLE ROCK APP CON 135.4 291.775 353.6	ADAMS TOWER 118.7 257.8	GND CON 121.9 339.8	CLNC DEL 118.95
-----------------------	---	-----------------------------------	-------------------------------	---------------------------



SC-1, 07 FEB 2013 to 07 MAR 2013

SC-1, 07 FEB 2013 to 07 MAR 2013

ELEV 266	D	THRE 254
----------	----------	----------



CATEGORY	A	B	C	D
S-ILS 4L	504/40 250 (300-¾)			
S-LOC 4L	860/40	606 (600-½)	860-1 3/8	606 (600-1 3/8)
CIRCLING	860-1	594 (600-1)	940-2	1180-3 914 (1000-3)
DME MINIMUMS				
S-LOC 4L	720/40	466 (500-¾)	720/50	466 (500-1)
CIRCLING	800-1	534 (600-1)	940-2	1180-3 674 (700-2) 914 (1000-3)

TDZ/CL Rwy 22R
HIRL Rwys 4R-22L, 4L-22R and 18-36
FAF to MAP 4.7 NM

Knots	60	90	120	150	180
Min:Sec	4:42	3:08	2:21	1:53	1:34