

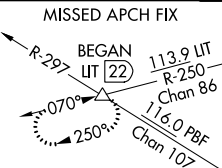
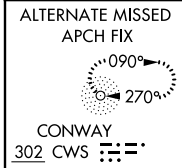
LOC/DME I-AAY <b>110.3</b> Chan 40	APP CRS <b>225°</b>	Rwy Idg THRE <b>8273</b> 262 Apt Elev <b>266</b>
--	------------------------	---

LITTLE ROCK/  
BILL AND HILLARY CLINTON NATIONAL/ADAMS FIELD (LIT)  
**ILS or LOC RWY 22R**

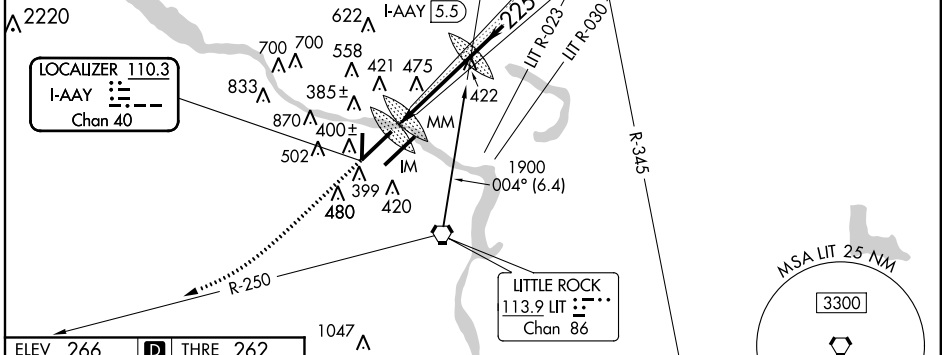
**VDP NA** when using Stuttgart altimeter setting. When local altimeter setting not received, use Stuttgart altimeter setting and increase all DA 82 feet, all MDA 100 feet. Increase S-ILS all Cats visibility to RVR 4000, increase S-LOC 22R Cat C visibility to RVR 5000, Cat D visibility to RVR 6000 and Circling Cat C visibility to 2½ miles. Simultaneous approach authorized with Rwy 22L.

**ALSIF-2**  
MISSED APPROACH: Climb to 1000 then climbing right turn to 2300 via LIT VORTAC R-250 to BEGAN Int/LIT 22 DME and hold.

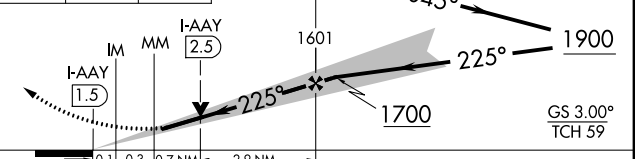
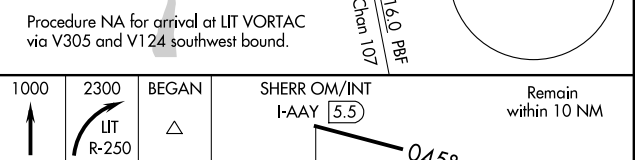
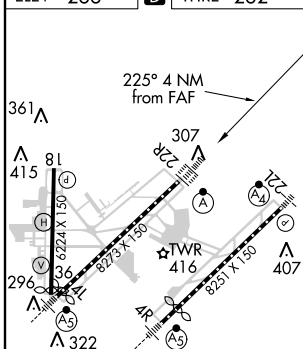
ATIS <b>125.65</b>	LITTLE ROCK APP CON <b>135.4 291.775 353.6</b>	ADAMS TOWER <b>118.7 257.8</b>	GND CON <b>121.9 339.8</b>	CLNC DEL <b>118.95</b>
-----------------------	---	-----------------------------------	-------------------------------	---------------------------



**DME REQUIRED**



ELEV 266	<b>D</b> THRE 262
----------	-------------------



TDZ/CL Rwy 22R	462/18 200 (200-½)			
HIRL Rwys 4R-22L, 4L-22R and 18-36	680/24 418 (500-½) 680/40 418 (500-¾)			
FAF to MAP 4 NM	800-1 534 (600-1) 940-2 674 (700-2) 1180-3 914 (1000-3)			
Knots	60	90	120	150
Min:Sec	4:00	2:40	2:00	1:36

SC-1, 07 FEB 2013 to 07 MAR 2013

SC-1, 07 FEB 2013 to 07 MAR 2013