

LOC/DME I-BWY 110.7 Chan 44	APP CRS 226°	Rwy Idg 8250 THRE 259 Apt Elev 266
---	------------------------	---

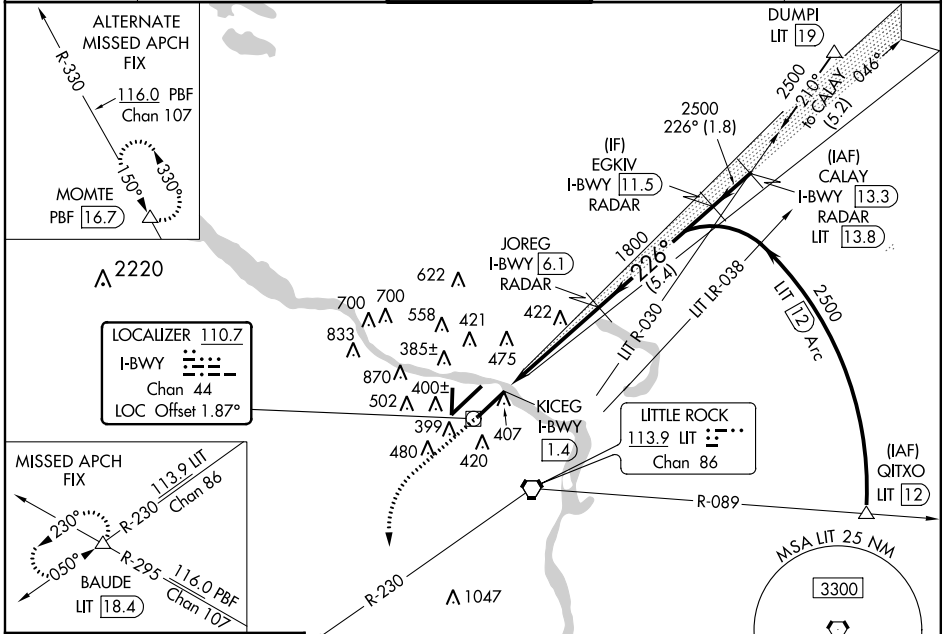
LITTLE ROCK/ BILL AND HILLARY CLINTON NATIONAL/ADAMS FIELD (LIT)

ILS or LOC RWY 22L

▲ DME or radar required. VDP NA when using Stuttgart altimeter setting. When local altimeter setting not received, use Stuttgart altimeter setting and increase all DA 82 feet, and all MDA 100 feet. Increase S-ILS all Cats visibility to RVR 5000, S-LOC Cat C and D visibility to 1 3/8 miles, and Circling Cat C to 2 1/4 miles. Simultaneous approach authorized with ILS or LOC Rwy 22R, ILS Rwy 22R (Cat II), ILS Rwy 22R (Cat III).

MALSF
MISSED APPROACH: Climb to 800 then climbing left turn to 3000 via heading 170° and LIT VORTAC R-230 to BAUDE Int/LIT 18.4 DME and hold.

ATIS 125.65	LITTLE ROCK APP CON 135.4 291.775 353.6	ADAMS TOWER 118.7 257.8	GND CON 121.9 339.8	CLNC DEL 118.95
-----------------------	---	-----------------------------------	-------------------------------	---------------------------

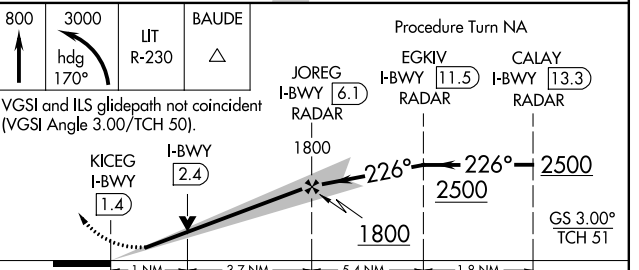
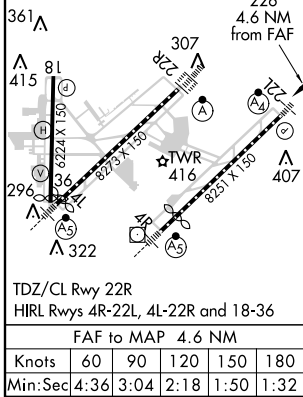


SC-1, 07 FEB 2013 to 07 MAR 2013

SC-1, 07 FEB 2013 to 07 MAR 2013

ELEV 266	D	THRE 259
-----------------	----------	-----------------

DME or RADAR REQUIRED



TDZ/CL Rwy 22R	HIRL Rws 4R-22L, 4L-22R and 18-36				
FAF to MAP 4.6 NM					
Knots	60	90	120	150	180
Min:Sec	4:36	3:04	2:18	1:50	1:32
CATEGORY	A	B	C	D	
S-ILS 22L	509/40		250 (300-3/4)		
S-LOC 22L	640/40		381 (400-3/4)		
CIRCLING	800-1 534 (600-1)		940-2 674 (700-2)		1180-3 914 (1000-3)

ILS or LOC RWY 22L