

VORTAC LNK 116.1 Chan 108	APP CRS 185°	Rwy ldg 12901 THRE 1195 Apt Elev 1219
---	------------------------	--

VOR RWY 18

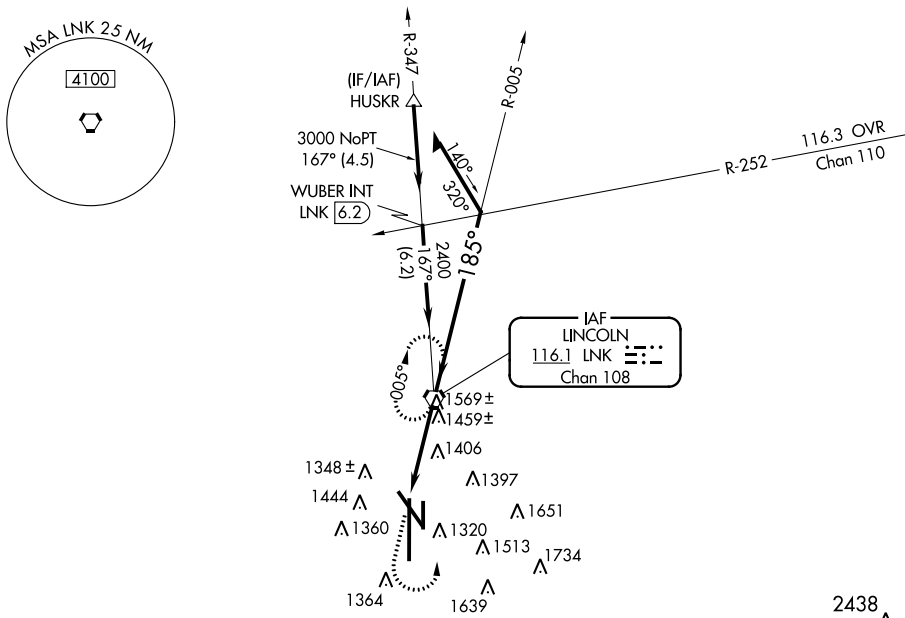
LINCOLN (LNK)

⚠ Inoperative table does not apply. VDP NA with Beatrice altimeter setting.
 When local altimeter setting not received, use Beatrice altimeter setting and increase all MDA 100 ft; increase S-18 and Circling Cat C/D visibilities ¼ mile.



MISSED APPROACH: Climb to 2800 then climbing left turn to 3000 direct LNK VORTAC and hold.

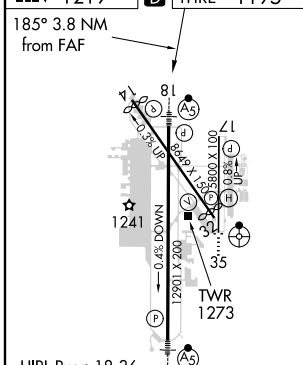
ATIS 118.05 290.9	LINCOLN APP CON 124.0 270.3	LINCOLN TOWER* 118.5 (CTAF) 253.5	GND CON 121.9 275.8	CLNC DEL 120.7 225.4	UNICOM 122.95
-----------------------------	---------------------------------------	---	-------------------------------	--------------------------------	-------------------------



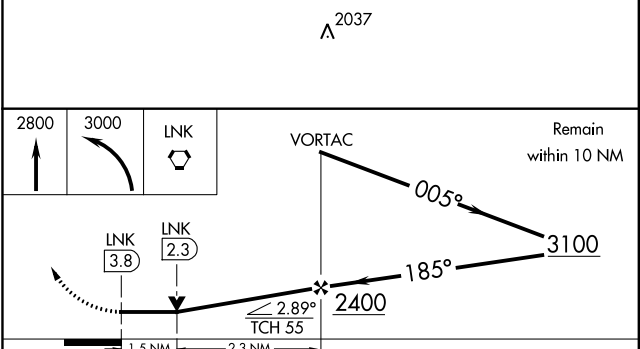
NC-2, 07 FEB 2013 to 07 MAR 2013

NC-2, 07 FEB 2013 to 07 MAR 2013

ELEV 1219	D	THRE 1195
-----------	----------	-----------



FAF to MAP 3.8 NM					
Knots	60	90	120	150	180
Min:Sec	3:48	2:32	1:54	1:31	1:16



CATEGORY	A	B	C	D
S-18	1720-1	525 (600-1)	1720-1½	525 (600-1½)
CIRCLING	1720-1 501 (600-1)	1760-1 541 (600-1)	1760-1½ 541 (600-1½)	1820-2 601 (700-2)