


# RNAV (GPS) RWY 36

LINCOLN (LNK)

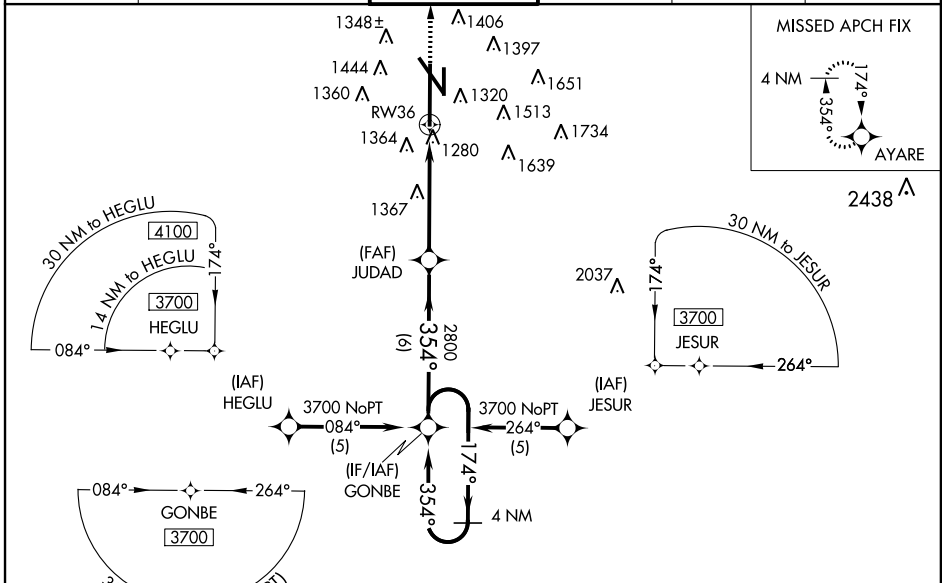
WAAS CH <b>56214</b> <b>W36A</b>	APP CRS <b>354°</b>	Rwy ldg <b>12901</b> TDZE <b>1175</b> Apt Elev <b>1219</b>
--	------------------------	--

**⚠** For uncompensated Baro-VNAV systems, LNAV/VNAV NA below -17°C (2°F) or above 46°C (114°F). DME/DME RNP-0.3 NA. When local altimeter setting not received, use Beatrice altimeter setting and increase all DA 91 feet, all MDA 100 feet and LNAV/VNAV all Cats, LNAV Cats C and D, and Circling Cats C and D visibility ¼ mile and LPV all Cats visibility ½ mile. For inoperative MALSR, increase LPV all Cats visibility to 1 mile. For inoperative MALSR when using Beatrice altimeter setting increase LPV all Cats visibility to 1½ mile. Baro-VNAV and VDP NA when using Beatrice altimeter setting.

MALSR 

MISSED APPROACH:  
Climb to 3800 direct AYARE and hold.


ATIS <b>118.05 290.9</b>	LINCOLN APP CON <b>124.0 270.3</b>	LINCOLN TOWER* <b>118.5 (CTAF) 253.5</b>	GND CON <b>121.9 275.8</b>	CLNC DEL <b>120.7 225.4</b>	UNICOM <b>122.95</b>
-----------------------------	---------------------------------------	---	-------------------------------	--------------------------------	-------------------------



NC-2, 07 FEB 2013 to 07 MAR 2013

NC-2, 07 FEB 2013 to 07 MAR 2013

ELEV 1219 **D** TDZE 1175

3800 AYARE 

\*LNAV only

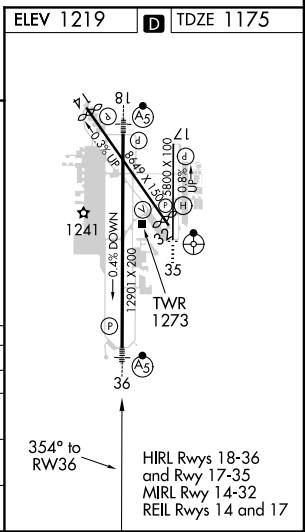
RW36 1.2 NM 3.7 NM 6 NM

JUDAD 2800 354°

GONBE 3700 174° 354°

4 NM Holding Pattern

GS 3.00° TCH 56



CATEGORY	A	B	C	D
LPV DA		1493/24	318 (400-½)	
LNAV/VNAV DA		1669/60	494 (500-1½)	
LNAV MDA	1620/24	445 (500-½)	1620/40 445 (500-¾)	1620/50 445 (500-1)
CIRCLING	1720-1 501 (600-1)	1760-1 541 (600-1)	1760-1½ 541 (600-1½)	1820-2 601 (700-2)