


LOC I-LNK	APP CRS	Rwy Idg	12901
109.9	354°	THRE	1175
		Apt Elev	1219

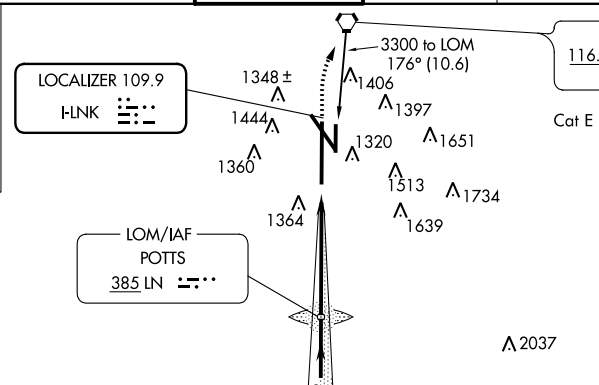
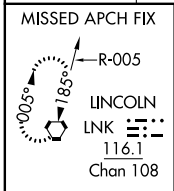
ILS or LOC RWY 36

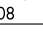
LINCOLN (LNK)

▼ *RVR 1800 authorized with use of FD or AP or HUD to DA. When local altimeter setting not received use Beatrice altimeter setting and increase all DA 91 feet and all MDA 100 feet, increase S-LOC 36 Cat C/D/E visibility to 1 $\frac{3}{8}$, Circling Cat C visibility to 1 $\frac{3}{4}$, and Cat D visibility to 2 $\frac{1}{4}$. For inoperative MALS, increase S-ILS 36 Cat E visibility to RVR 4000, S-LOC 36 Cat E visibility to 1 $\frac{3}{8}$. For inoperative MALS when using Beatrice altimeter setting, increase S-ILS 36 all Cats visibility to RVR 4500, S-LOC 36 Cat E visibility to 1 $\frac{3}{4}$.

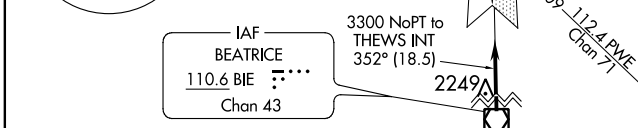
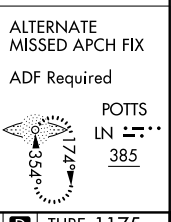
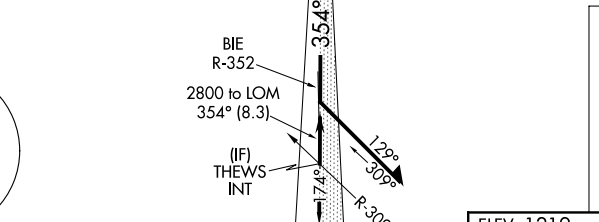
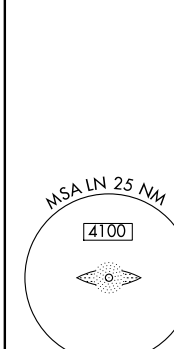
MALS R  MISSED APPROACH: Climb to 1700 then climbing right turn to 3000 direct LNK VORTAC and hold.

ATIS	LINCOLN APP CON	LINCOLN TOWER*	GND CON	CLNC DEL	UNICOM
118.05 290.9	124.0 270.3	118.5 (CTAF) 253.5	121.9 275.8	120.7 225.4	122.95

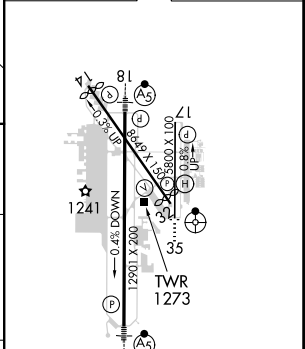
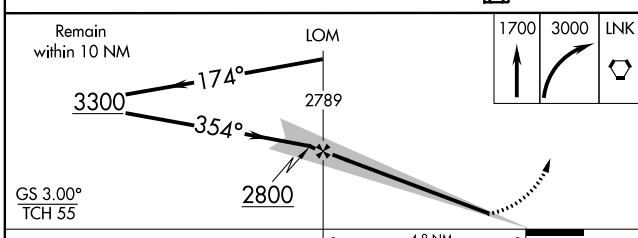


LINCOLN **116.1** LNK  Chan 108

Cat E procedure turn NA.



ELEV 1219	D THRE 1175
-----------	--------------------



CATEGORY	A	B	C	D	E
S-ILS 36*	1375/24 200 (200- $\frac{1}{2}$)				
S-LOC 36	1680/24	505 (500- $\frac{1}{2}$)	1680/55	505 (500-1 $\frac{1}{4}$)	
CIRCLING	1680-1 461 (500-1)	1760-1 541 (600-1)	1760-1 $\frac{1}{2}$ 541 (600-1 $\frac{1}{2}$)	1820-2 601 (700-2)	2040-3 821 (900-3)

354° 4.8 NM from FAF	HIRL Rwy 18-36 and Rwy 17-35	MIRL Rwy 14-32	REIL Rwy 14 and 17		
FAF to MAP 4.8 NM					
Knots	60	90	120	150	180
Min:Sec	4:48	3:12	2:24	1:55	1:36

NC-2, 07 FEB 2013 to 07 MAR 2013

NC-2, 07 FEB 2013 to 07 MAR 2013