

LOC I-OCZ <b>111.1</b>	APP CRS <b>174°</b>	Rwy Idg THRE Apt Elev	<b>12901</b> <b>1195</b> <b>1219</b>
---------------------------	------------------------	-----------------------------	--

# ILS or LOC RWY 18

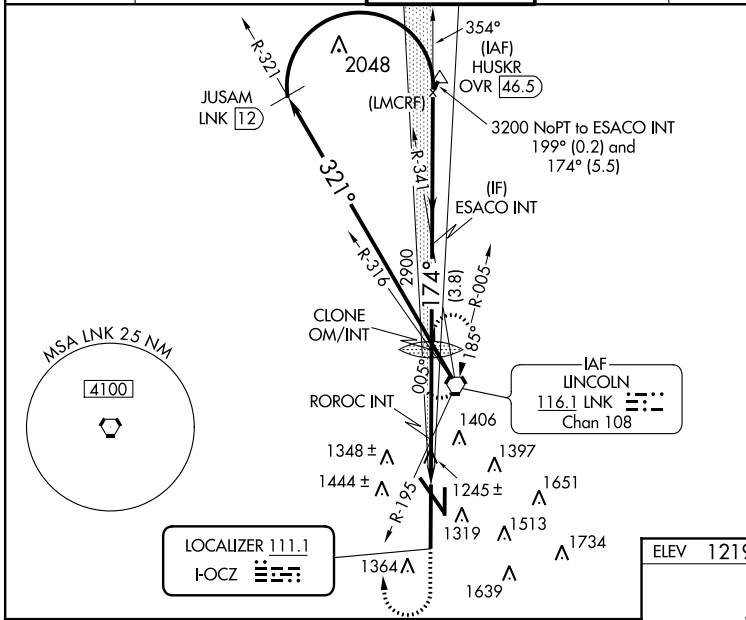
LINCOLN (LNK)

**▼** \*RVR 1800 authorized with the use of FD or AP or HUD to DA. When local altimeter setting not received use Beatrice altimeter setting and increase all DA 91 feet and all MDA 100 feet, increase S-LOC 18 Cat C/D/E visibility to 1½, Circling Cat C visibility to 2 and Cat D visibility to 2¼; increase ROROC fix minimums S-LOC 18 Cat C/D/E visibility to 1 ¾ Circling Cat C visibility to 1¾ and Cat D visibility to 2¼. For inoperative MALSRL, increase S-ILS 18 Cat E visibility to RVR 4000, S-LOC 18 Cat E visibility to 1¾, and ROROC fix minimums S-LOC 18 Cat E visibility to 1½. For inoperative MALSRL when using Beatrice altimeter setting, increase S-ILS 18 all Cats visibility to RVR 4500, S-LOC 18 Cat E visibility to 2, and ROROC fix minimums S-LOC 18 Cat C/D/E visibility to 1¾.

**MALSRL**

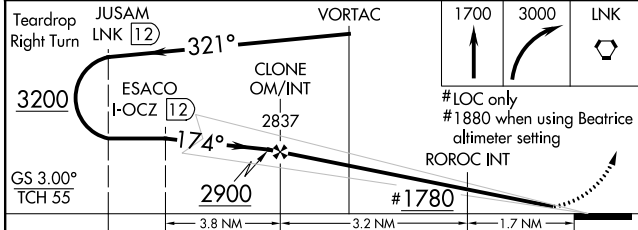
**MISSED APPROACH:**  
Climb to 1700 then climbing right turn to 3000 direct LNK VORTAC and hold.

ATIS <b>118.05 290.9</b>	LINCOLN APP CON <b>124.0 270.3</b>	LINCOLN TOWER★ <b>118.5(CTAF) 253.5</b>	GND CON <b>121.9 275.8</b>	CLNC DEL <b>120.7 225.4</b>	UNICOM <b>122.95</b>
-----------------------------	---------------------------------------	--	-------------------------------	--------------------------------	-------------------------



**ALTERNATE MISSED APCH FIX**

**POTTS**  
385 LN



ELEV	1219	THRE	1195
------	------	------	------

Knots	60	90	120	150	180
Min:Sec	4:54	3:16	2:27	1:58	1:38

CATEGORY	A	B	C	D	E
S-ILS 18	*1395/24 200 (200-½)				
S-LOC 18	1780/24	585 (600-½)	1780-1¼		585 (600-1¼)
CIRCLING	1780-1	561 (600-1)	1780-1¾	1820-2	2040-3
ROROC FIX MINIMUMS (DUAL VOR RECEIVERS REQUIRED)					
S-LOC 18	1720/24	525 (600-½)	1720/55		525 (600-1¼)
CIRCLING	1720-1	501 (600-1)	1760-1	1760-1½	1820-2
		541 (600-1)	541 (600-1½)	601 (700-2)	821 (900-3)

NC-2, 07 FEB 2013 to 07 MAR 2013

NC-2, 07 FEB 2013 to 07 MAR 2013