

VORTAC LNK 116.1 Chan 108	APCH CRS 185°	Rwy ldg TDZE 1195 Arpt Elev 1219
---	-------------------------	--

HI-VOR/DME or TACAN RWY 18

JAL-232 [USAF]

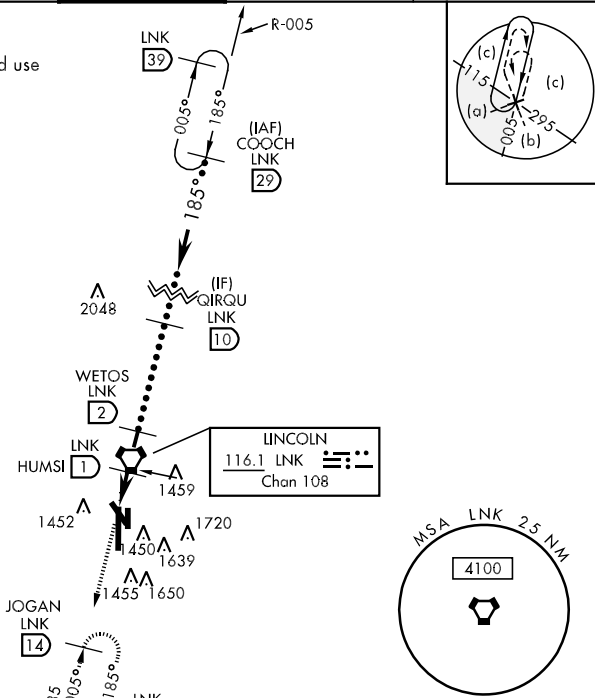
LINCOLN (KLNK)

MALS R MISSED APPROACH: Climb to 3300 via LNK VORTAC R-185 to JOGAN 14 DME and hold.

ATIS 118.05 290.9	LINCOLN APP CON 124.0 270.3	LINCOLN TOWER ★ 118.5 253.5	GND CON 121.9 275.8	CLNC DEL 120.7 225.4
-----------------------------	---------------------------------------	---------------------------------------	-------------------------------	--------------------------------

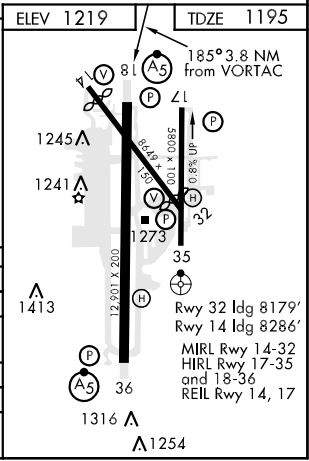
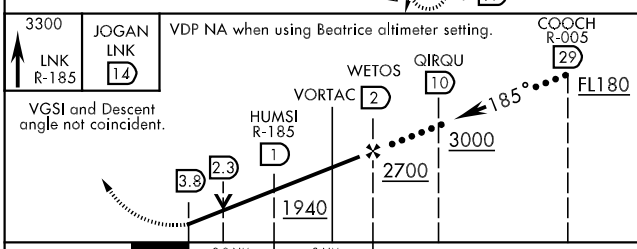
Inoperative table does not apply.

When local altimeter setting not received use Beatrice altimeter setting.



RADAR REQUIRED

EMERG SAFE ALT 100 NM 4800



CATEGORY	C	D	E
S-18	1720-1½	525	(600-1½)
CIRCLING	1760-1½	1820-2	2040-3
	541 (600-1½)	601 (700-2)	821 (900-3)
BEATRICE ALTIMETER SETTING			
S-18	1820-1¾	625	(700-1¾)
CIRCLING	1860-1½	1920-2¼	2140-3¼
	641 (700-1½)	701 (800-2¼)	921 (1000-3¼)

HI-VOR/DME or TACAN RWY 18

NC-2, 07 FEB 2013 to 07 MAR 2013

NC-2, 07 FEB 2013 to 07 MAR 2013