

# HI-ILS or LOC/DME RWY 36

LOC I-LNK <b>109.9</b>	APCH CRS <b>354°</b>	Rwy ldg <b>12,901</b> TDZE <b>1175</b> Arpt Elev <b>1219</b>	JAL-232 [USAF]	LINCOLN (KLNK)
---------------------------	-------------------------	--	----------------	----------------

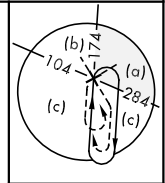
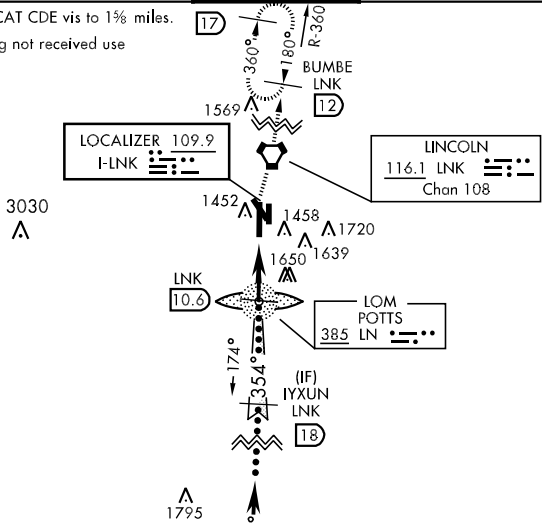
▼ \* When ALS inop, increase CAT CDE RVR to 40, vis to 3/8 mile.  
 \*\* When ALS inop, increase CAT CDE vis to 1 1/8 miles.  
 \*\*\* When ALS inop, increase CAT CDE RVR to 45, vis to 7/8 mile.



**MISSED APPROACH:** Climb to 1700 then climbing right turn to 3000 direct LNK VORTAC then via LNK R-360 to BUMBE 12 DME and hold.

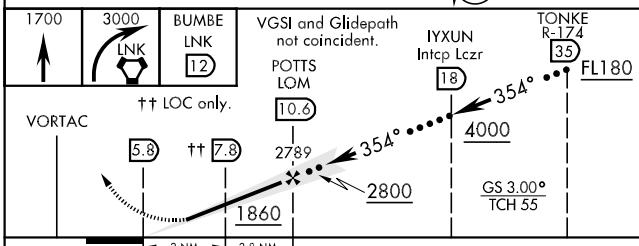
ATIS <b>118.05 290.9</b>	LINCOLN APP CON <b>124.0 270.3</b>	LINCOLN TOWER * <b>118.5 253.5</b>	GND CON <b>121.9 275.8</b>	CLNC DEL <b>120.7 225.4</b>
-----------------------------	---------------------------------------	---------------------------------------	-------------------------------	--------------------------------

† When ALS inop, increase CAT CDE vis to 1 1/8 miles.  
 When local altimeter setting not received use Beatrice altimeter setting.

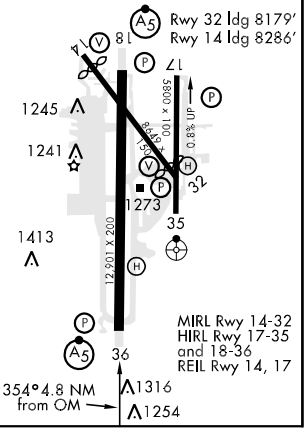


**DME REQUIRED  
RADAR REQUIRED**

EMERG SAFE ALT 100 NM 4800



ELEV 1219	TDZE 1175
-----------	-----------



CATEGORY	C	D	E
S-ILS 36 *	1375/24	200	(200-1/2)
S-LOC 36 **	1620/45	445	(500-3/8)
CIRCLING	1760-1 1/2 541 (600-1 1/2)	1820-2 601 (700-2)	2040-3 821 (900-3)
BEATRICE ALTIMETER SETTING			
S-ILS 36 ***	1466/24	291	(300-1/2)
S-LOC 36 †	1720/60	545	(600-1 1/8)
CIRCLING	1820-2 601 (700-2)	1920-2 1/4 701 (800-2 1/4)	2140-3 1/4 921 (1000-3 1/4)

# HI-ILS or LOC/DME RWY 36

NC-2, 07 FEB 2013 to 07 MAR 2013

NC-2, 07 FEB 2013 to 07 MAR 2013