

HI-ILS or LOC RWY 18

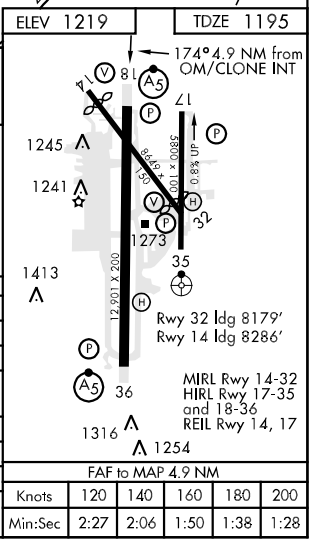
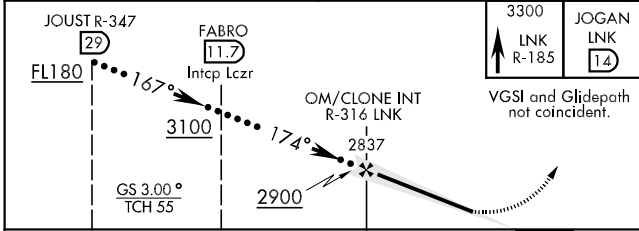
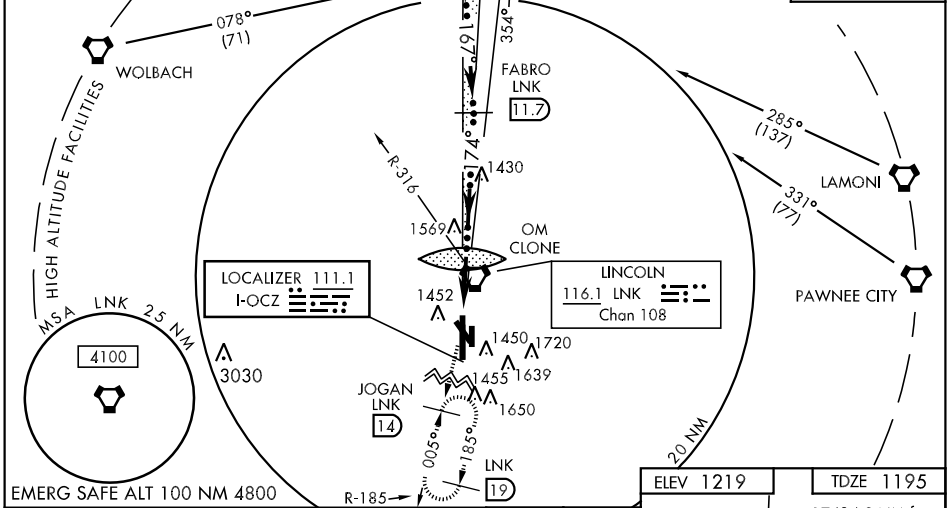
LOC I-OCZ 111.1	APCH CRS 174°	Rwy Idg 12,901 TDZE 1195 Arpt Elev 1219	JAL-232 [USAF]	LINCOLN (KLNK)
---------------------------	-------------------------	--	----------------	----------------

▼ * When ALS inop, increase CAT CDE RVR to 40, vis to ¾ mile.
 ** When ALS inop, increase CAT CDE vis to 1¾ miles.
 *** When ALS inop, increase CAT CDE RVR to 45, vis to 7/8 mile.

MALS R (A5) MISSED APPROACH: Climb to 3300 on LNK VORTAC R-185 to JOGAN (LNK 14 DME) and hold.

ATIS 118.05 290.9	LINCOLN APP CON 124.0 270.3	LINCOLN TOWER * 118.5 253.5	GND CON 121.9 275.8	CLNC DEL 120.7 225.4
-----------------------------	---------------------------------------	---------------------------------------	-------------------------------	--------------------------------

† When ALS inop, increase CAT CDE vis to 2 miles.
RADAR REQUIRED
DME REQUIRED
 When local altimeter setting not received use Beatrice altimeter.



CATEGORY	C	D	E
S-ILS 18 *	1395/24	200 (200-½)	
S-LOC 18 **	1820-1¾	1820-1¾	625 (700-1¾)
CIRCLING	1820-1¾	1820-2	2040-3
	601 (700-1¾)	601 (700-2)	821 (900-3)
BEATRICE ALTIMETER SETTING			
S-ILS 18 ***	1486/24	291 (200-½)	
S-LOC 18 †	1920-1½	725 (800-1½)	
CIRCLING	1920-2	1920-2¼	2140-3¼
	701 (800-2)	701 (800-2¼)	921 (1000-3¼)

HI-ILS or LOC RWY 18

NC-2, 07 FEB 2013 to 07 MAR 2013

NC-2, 07 FEB 2013 to 07 MAR 2013