

WAAS CH 50230 W26A	APP CRS 255°	Rwy Idg THRE 4112 Apt Elev 4170
--	------------------------	---

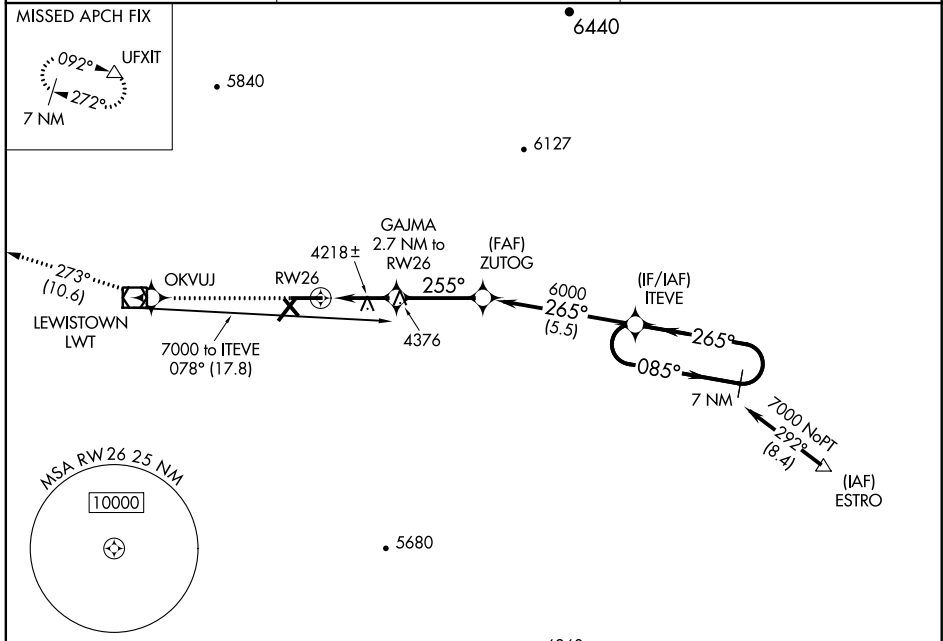
RNAV (GPS) RWY 26

LEWISTOWN MUNI (LWT)

▽ For uncompensated Baro-VNAV systems, LNAV/VNAV NA below -23°C (-9°F) or above 18°C (64°F). When local altimeter setting not received, procedure NA. DME/DME RNP-0.3 NA.

MISSED APPROACH: Climb to 8400 direct OKVUJ and on track 273° to UFXIT and hold, continue climb-in-hold to 8400.

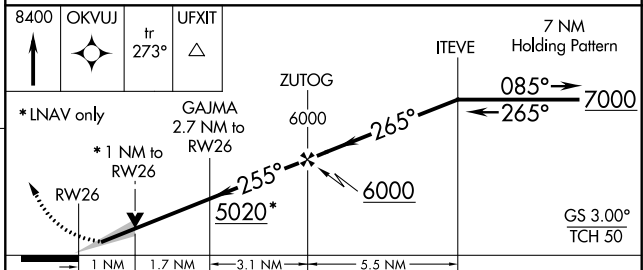
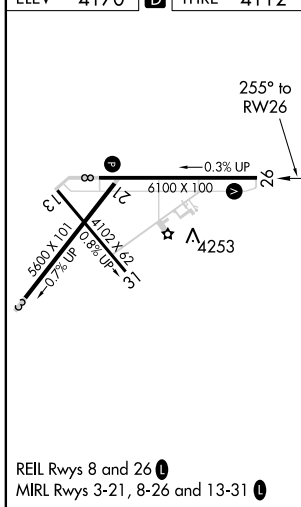
ASOS 118.375	GREAT FALLS RADIO 122.2	UNICOM 123.0 (CTAF) ①
------------------------	-----------------------------------	---------------------------------



NW-1, 07 FEB 2013 to 07 MAR 2013

NW-1, 07 FEB 2013 to 07 MAR 2013

ELEV 4170	D	THRE 4112
-----------	----------	-----------



CATEGORY	A	B	C	D
LPV DA		4312-¾	200 (200-¾)	
LNAV/VNAV DA		4377-7/8	265 (300-7/8)	
LNAV MDA		4480-1	368 (400-1)	
CIRCLING	4620-1	450 (500-1)	4720-1½ 550 (600-1½)	4800-2 630 (700-2)