

FORT SILL, OKLAHOMA

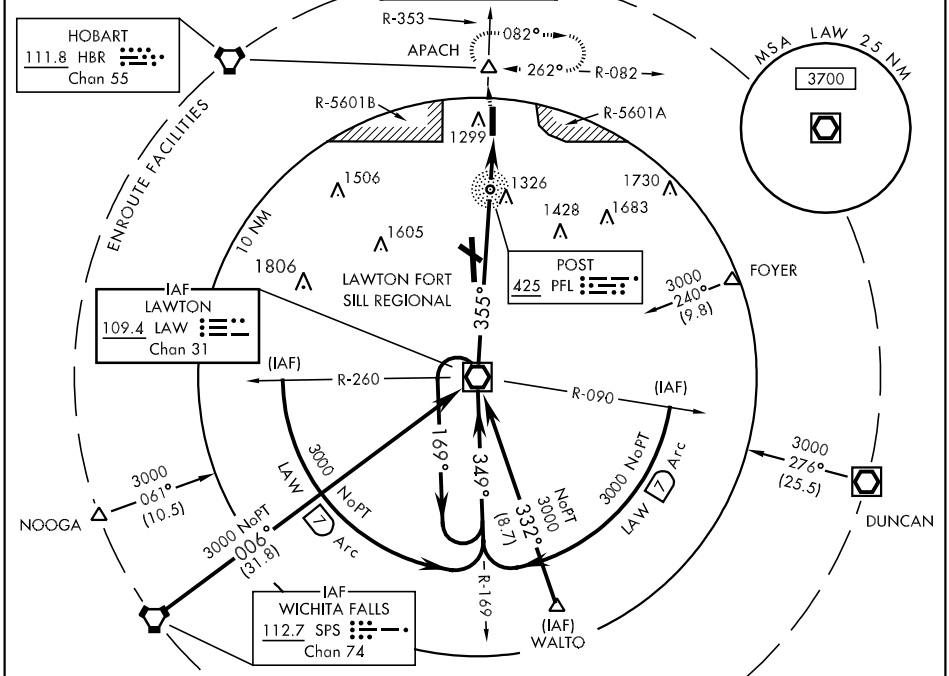
VOR RWY 35

VOR/DME LAW 109.4 Chan 31	APCH CRS 355°	Rwy Idg TDZE Arpt Elev 5001 1187 1189
--	-------------------------	---

AL-230 [USA]

HENRY POST AAF (KFSI)

▽	SALS (A2)	MISSED APPROACH: To 4200 out LAW VOR/DME R-353 to APACH INT and hold.			
ATIS 135.425 354.025	FORT SILL APP CON N127.3 307.275 S120.55	POST TOWER ★ 124.95 0 229.4	GND CON 121.7 279.575	CLNC DEL 121.7 279.575	ASR/PAR



Procedure turn NA

ELEV	1189	TDZE	1187
------	------	------	------

CATEGORY	A	B	C	D
S-35	1780/40 593 (600-34)		1780/60 593 (600-14)	1780-1 1/2 593 (600-1 1/2)
CIRCLING	1780-1 591 (600-1)		1780-1 1/2 591 (600-1 1/2)	1780-2 591 (600-2)
DME/PFL NDB MINIMUMS				
S-35	1640/40 453 (500-34)		1640/50 453 (500-1)	1640/60 453 (500-1 1/4)
CIRCLING	1680-1 491 (500-1)		1680-1 1/2 491 (500-1 1/2)	1740-2 551 (600-2)

FAF to MAP 8.8 NM					
Knots	60	90	120	150	180
Min:Sec	8:48	5:52	4:24	3:31	2:56

SC-1, 07 FEB 2013 to 07 MAR 2013

SC-1, 07 FEB 2013 to 07 MAR 2013

FORT SILL, OKLAHOMA
Amdt 13A 11293

34°39'N-98°24'W

HENRY POST AAF (KFSI)

VOR RWY 35