

FORT SILL, OKLAHOMA

# RNAV (GPS) RWY 35

APCH CRS	Rwy Idg	<b>5001</b>
<b>352°</b>	TDZE	<b>1187</b>
	Arprt Elev	<b>1189</b>

AL-230 [USA]

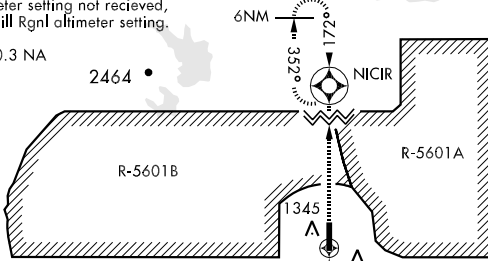
HENRY POST AAF (KFSI)

<p>▼ * When ALS inop, increase CAT ABCD vis to 1¼ miles.                  ** When ALS inop, increase CAT AB vis to 1 mile,                  CAT C vis to 1½ miles, CAT D vis to 1½ miles.</p>	SALS	<p>MISSED APPROACH: Climb to 3500 direct NICIR and hold.</p>
	(A2)	

<p>ATIS  <b>135.425 354.025</b></p>	<p>FORT SILL APP CON  <b>N127.3 307.275                  S120.55</b></p>	<p>POST TOWER ★  <b>124.95 0 229.4</b></p>	<p>GND CON  <b>121.7 279.575</b></p>	<p>CLNC DEL  <b>121.7 279.575</b></p>	<p>ASR/PAR</p>
---	--	--	--	---	----------------

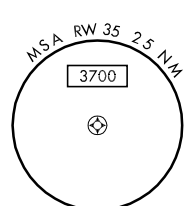
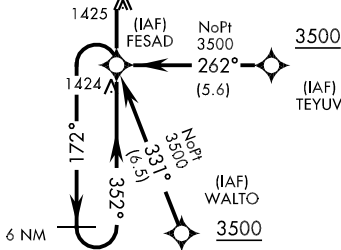
When local altimeter setting not received, use Lawton-Fort Sill Rgnl altimeter setting.

DME/DME RNP-0.3 NA



LAWTON FORT SILL REGIONAL

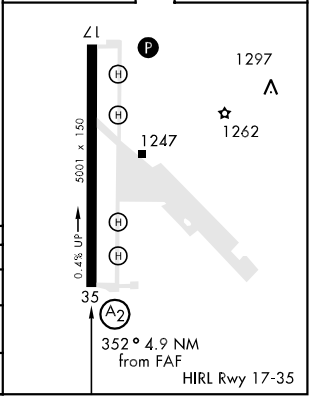
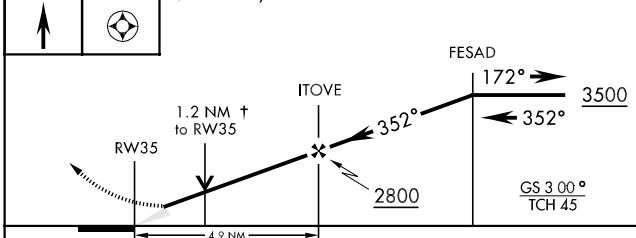
For uncompensated Baro-VNAV systems, LNAV/VNAV NA below -17°C (2°F) or above 46°C (114°F)



SC-1, 07 FEB 2013 to 07 MAR 2013

SC-1, 07 FEB 2013 to 07 MAR 2013

3500	NICIR	† LNAV only	ELEV 1189	TDZE 1187
------	-------	-------------	-----------	-----------



CATEGORY	A	B	C	D
LNAV/VNAV * DA	151-2-1		325	(400-1)
LNAV MDA **	1640-¾	453 (500-¾)	1640-1 453 (500-1)	1640-1¼ 453 (500-1¼)
CIRCLING	1700-1	511 (600-1)	1720-1½ 531 (600-1½)	1740-2 551 (600-2)

FORT SILL, OKLAHOMA  
 Orig 11293

34°39'N-98°24'W

HENRY POST AAF (KFSI)

# RNAV (GPS) RWY 35