

APCH CRS	Rwy Idg	5001
172°	TDZE	1189
	Arpt Elev	1189

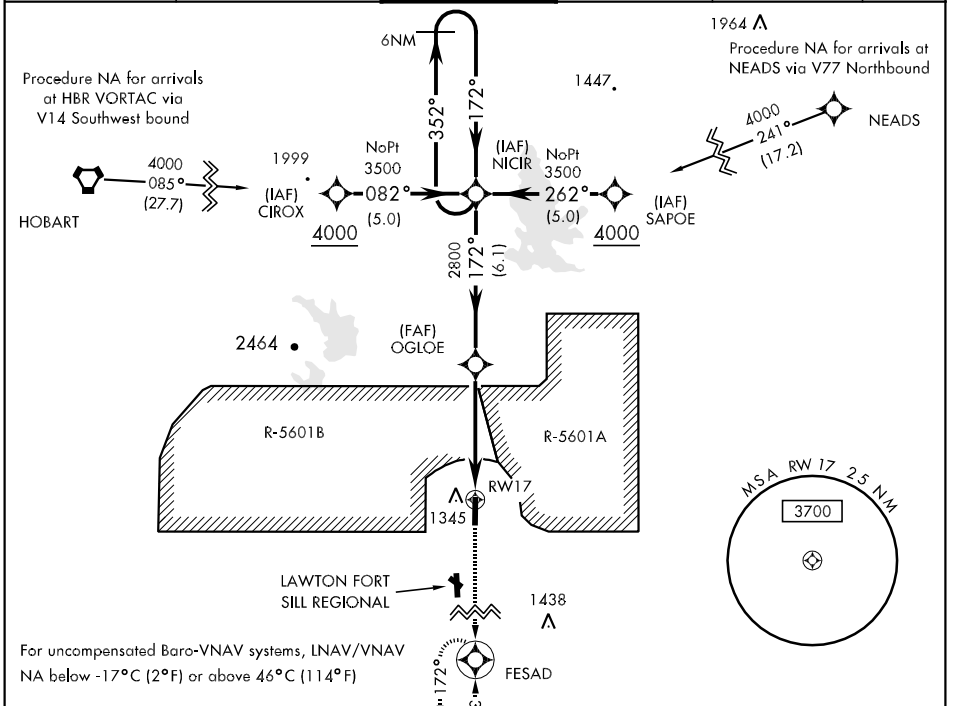
AL-230 [USA]

HENRY POST AAF (KFSI)

▼ When local altimeter setting not received, use Lawton-Fort Sill Rgnl altimeter setting. DME/DME RNP-0.3 NA

MISSED APPROACH: Climb to 3500 direct to FESAD and hold.

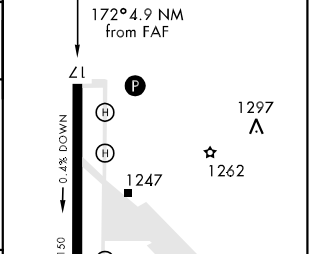
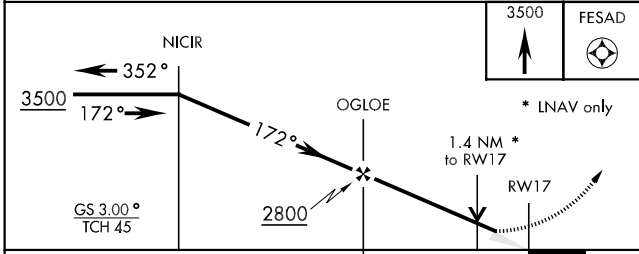
ATIS 135.425 354.025	FORT SILL APP CON N127.3 307.275 S120.55	POST TOWER ★ 124.95 0 229.4	GND CON 121.7 279.575	CLNC DEL 121.7 279.575	ASR/PAR
-------------------------	--	--------------------------------	--------------------------	---------------------------	---------



SC-1, 07 FEB 2013 to 07 MAR 2013

SC-1, 07 FEB 2013 to 07 MAR 2013

ELEV	1189	TDZE	1189
------	------	------	------



CATEGORY	A	B	C	D
LNAV/VNAV DA	1742-2		553 (600-2)	
LNAV MDA	1680-1 491 (500-1)		1680-1½ 491 (500-1½)	1680-1½ 491 (500-1½)
CIRCLING	1700-1 511 (600-1)		1720-1½ 531 (600-1½)	1740-2 551 (600-2)