

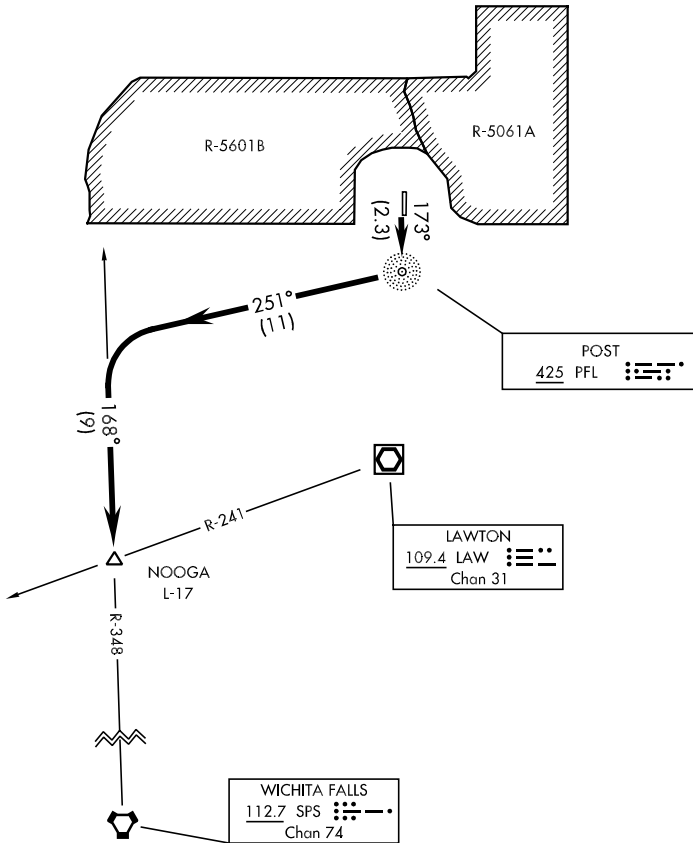
NOOGA-TWO DEPARTURE (NOOGA2•NOOGA)

HENRY POST AAF (KFSI)

FORT SILL, OKLAHOMA

SL-230 [USA]

ATIS 135.425 354.025
 CLNC DEL
 121.7 279.575
 GND CON
 121.7 279.575
 POST TOWER★
 124.95 229.4
 FT SILL DEP CON
 120.55 307.275



DEPARTURE ROUTE DESCRIPTION

Proceed direct to PFL NDB, thence via 251° mag brg from PFL NDB to and via SPS R-348 to NOOGA INT, maintain (assigned altitude).

NOOGA-TWO DEPARTURE (NOOGA2•NOOGA)

FORT SILL, OKLAHOMA

HENRY POST AAF (KFSI)

SC-1, 07 FEB 2013 to 07 MAR 2013

SC-1, 07 FEB 2013 to 07 MAR 2013