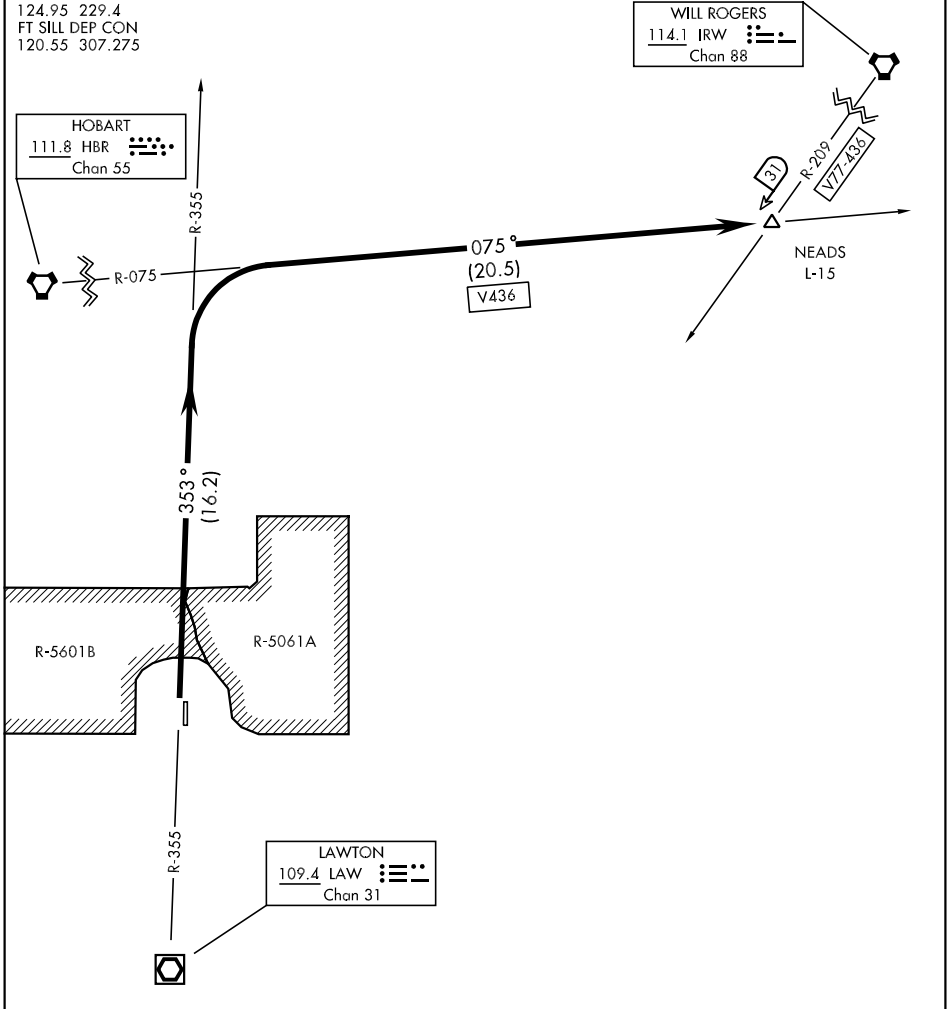


# NEADS-ONE DEPARTURE (NEADS1 • NEADS)

FORT SILL, OKLAHOMA

ATIS 135.425 354.025  
 CLNC DEL  
 121.7 279.575  
 GND CON  
 121.7 279.575  
 POST TOWER★  
 124.95 229.4  
 FT SILL DEP CON  
 120.55 307.275

SL-230 [USA]



SC-1, 07 FEB 2013 to 07 MAR 2013

SC-1, 07 FEB 2013 to 07 MAR 2013

## DEPARTURE ROUTE DESCRIPTION

Proceed via LAW R-353 and thence via HBR R-075 to NEADS INT, maintain (assigned altitude).

# NEADS-ONE DEPARTURE (NEADS1 • NEADS)

FORT SILL, OKLAHOMA  
HENRY POST AAF (KFSI)