

VOR/DME LWV 108.8 Chan 25	APP CRS 356°	Rwy ldg TDZE Apt Elev	5199 429 430
--	------------------------	-----------------------------	---

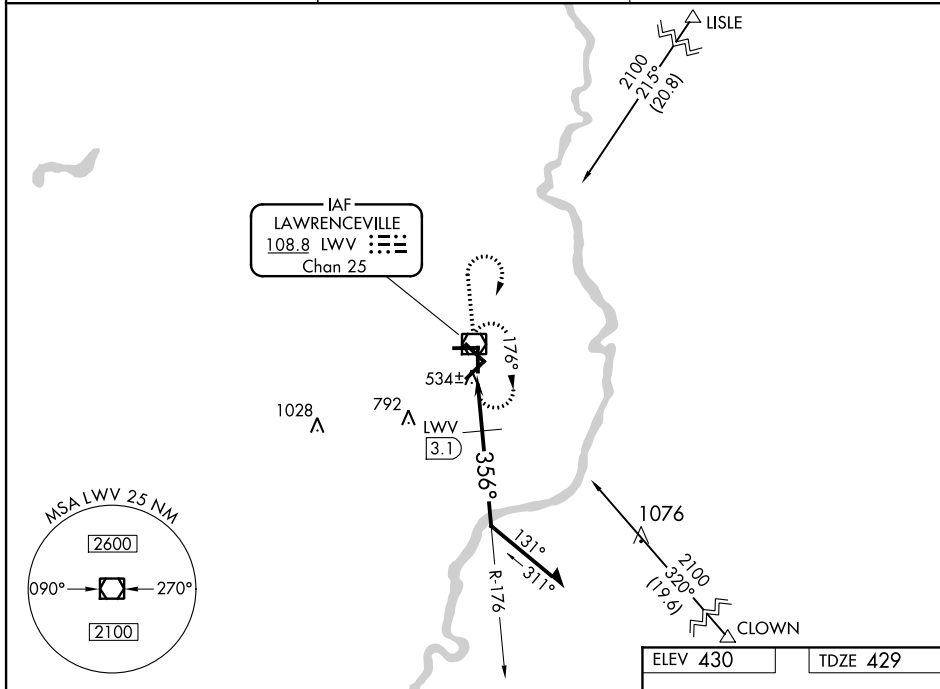
VOR RWY 36

LAWRENCEVILLE-VINCENNES INTL (LWV)

Visibility reduction by helicopters NA.

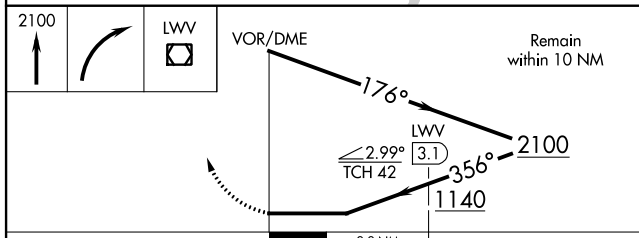
 MISSED APPROACH: Climb to 2100, then right turn direct LWV VOR/DME and hold.

ASOS 118.0	EVANSVILLE APP CON ★ 125.6 267.9	UNICOM 122.8 (CTAF) 0
----------------------	--	---------------------------------

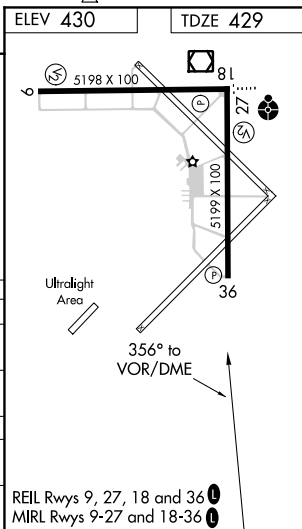


EC-3, 07 FEB 2013 to 07 MAR 2013

EC-3, 07 FEB 2013 to 07 MAR 2013



CATEGORY	A	B	C	D
S-36	1140-1	711 (800-1)	1140-2 711 (800-2)	1140-2¼ 711 (800-2¼)
CIRCLING	1140-1	710 (800-1)	1140-2 710 (800-2)	1140-2¼ 710 (800-2¼)
DME MINIMUMS				
S-36	800-1 371 (400-1)		800-1¼ 371 (400-1¼)	
CIRCLING	880-1	450 (500-1)	880-1½ 450 (500-1½)	980-2 550 (600-2)



REIL Rwy 9, 27, 18 and 36 0
MIRL Rwy 9-27 and 18-36 0