

LAWRENCEVILLE, ILLINOIS

AL-229 (FAA)

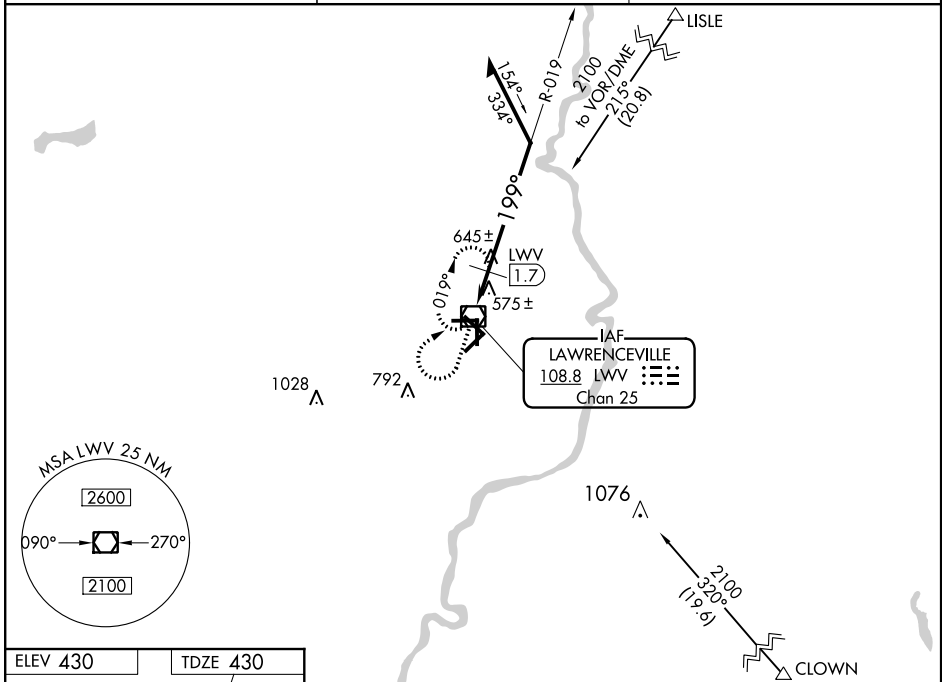
VOR RWY 18

LAWRENCEVILLE-VINCENNES INTL (LWV)

VOR/DME LWV 108.8 Chan 25	APP CRS 199°	Rwy ldg TDZE Apt Elev	5199 430 430
---	------------------------	-----------------------------	---

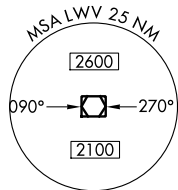
MISSED APPROACH: Climb to 2100 then right turn direct LWV VOR/DME and hold.

ASOS 118.0	EVANSVILLE APP CON ★ 125.6 267.9	UNICOM 122.8 (CTAF) 0
----------------------	--	---------------------------------

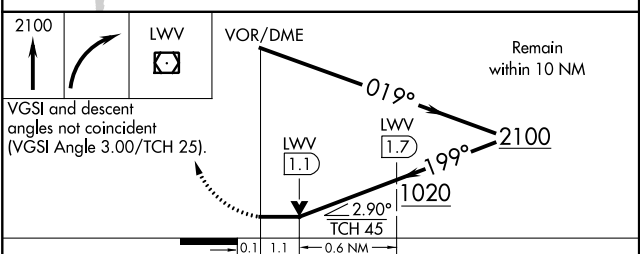
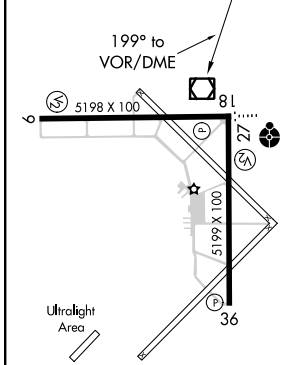


EC-3, 07 FEB 2013 to 07 MAR 2013

EC-3, 07 FEB 2013 to 07 MAR 2013



ELEV 430	TDZE 430
----------	----------



CATEGORY	A	B	C	D
S-18	1020-1	590 (600-1)	1020-1½ 590 (600-1½)	1020-1¾ 590 (600-1¾)
CIRCLING	1020-1	590 (600-1)	1020-1½ 590 (600-1½)	1020-2 590 (600-2)
DME MINIMUMS				
S-18	840-1	410 (500-1)	840-1¼	410 (500-1¼)
CIRCLING	880-1	450 (500-1)	880-1½ 450 (500-1½)	980-2 550 (600-2)

REIL Rwy 9, 27, 18 and 36
MIRL Rwy 9-27 and 18-36

LAWRENCEVILLE, ILLINOIS

LAWRENCEVILLE-VINCENNES INTL (LWV)

Amtd 1 12096

38°46'N - 87°36'W

VOR RWY 18