

WAAS CH 99528 W36A	APP CRS 360°	Rwy Idg THRE 425 Apt Elev 430	5199
--	------------------------	---	-------------

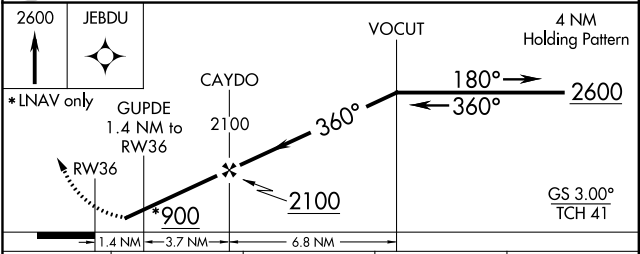
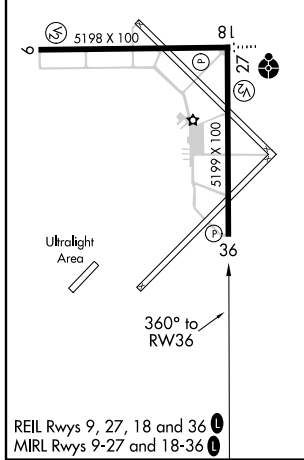
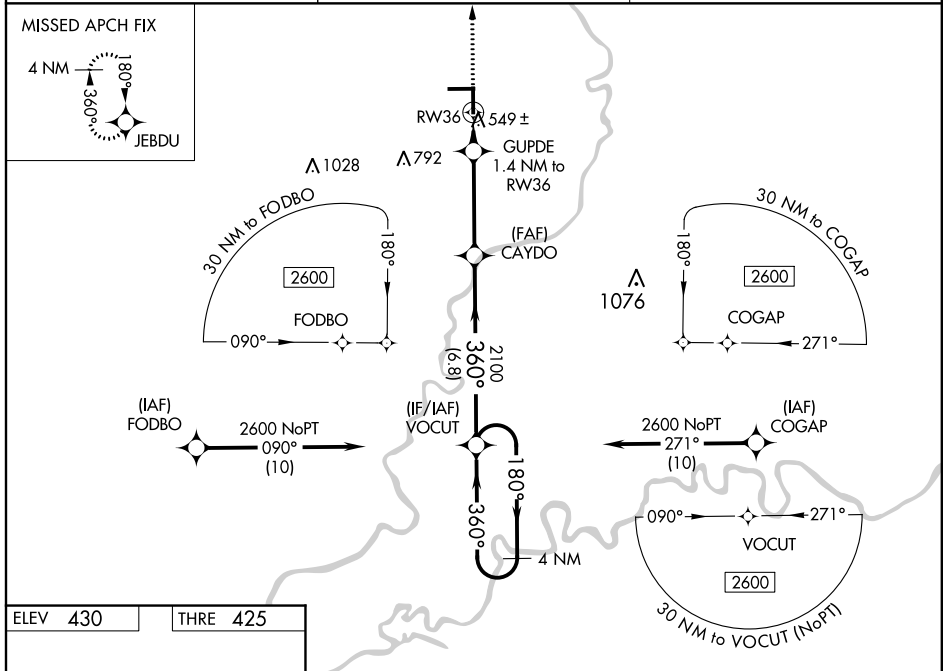
RNAV (GPS) RWY 36

LAWRENCEVILLE-VINCENNES INTL (LWV)

⚠ Baro-VNAV NA when using Mount Carmel altimeter setting. For uncompensated Baro-VNAV systems, LNAV/VNAV NA below -15°C (5°F) or above 41°C (105°F). When VGSI inop, Straight-in/Circling Rwy 36 procedure NA at night. DME/DME RNP-0.3 NA. Visibility reduction by helicopters NA. When local altimeter setting not received, use Mount Carmel altimeter setting; increase all DA 26 feet and all MDA 40 feet; increase LNAV/VNAV visibility all Cats 1/8 mile and LNAV visibility Cats C and D 1/8 mile.

ⓘ MISSED APPROACH: Climb to 2600 direct JEBDU and hold.

ASOS 118.0	EVANSVILLE APP CON ★ 125.6 267.9	UNICOM 122.8 (CTAF) 0
----------------------	--	---------------------------------



CATEGORY	A	B	C	D
LPV DA		675-1	250 (300-1)	
LNAV/VNAV DA		821-1 3/8	396 (400-1 1/8)	
LNAV MDA		800-1	375 (400-1)	
CIRCLING	880-1	450 (500-1)	900-1 1/2 470 (500-1 1/2)	980-2 550 (600-2)

EC-3, 07 FEB 2013 to 07 MAR 2013

EC-3, 07 FEB 2013 to 07 MAR 2013