

WAAS CH 53528 W18A	APP CRS 180°	Rwy Idg THRE 429 Apt Elev 430	5199
--	------------------------	---	-------------

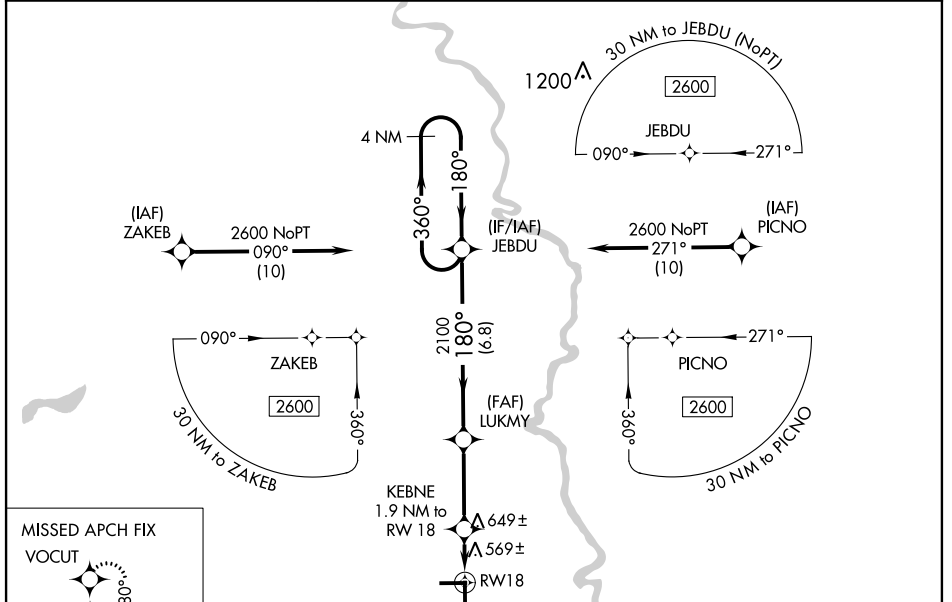
RNAV (GPS) RWY 18

LAWRENCEVILLE-VINCENNES INTL (LWV)

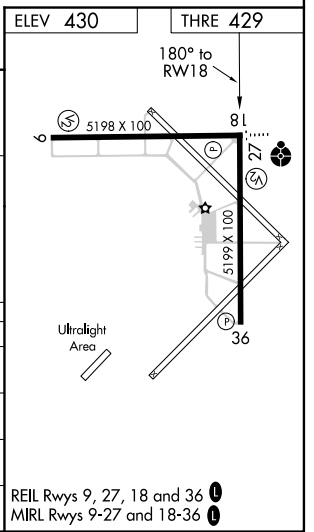
⚠ For uncompensated Baro-VNAV systems, LNAV/VNAV NA below -15°C (5°F) or above 41°C (105°F).
⚠ DME/DME RNP-0.3 NA. Baro-VNAV and VDP NA when using Mount Carmel altimeter setting.
 When local altimeter setting not received, use Mount Carmel altimeter setting; increase all DA 26 feet, and all MDA 40 feet; increase LNAV/VNAV visibility all Cats ½ mile, LNAV visibility Cats C and D ¼ mile, and Circling visibility Cat C ½ mile.

MISSED APPROACH:
 Climb to 2600 direct
 VOCUT and hold.

ASOS 118.0	EVANSVILLE APP CON ★ 125.6 267.9	UNICOM 122.8 (CTAF) 0
----------------------	--	---------------------------------



4 NM Holding Pattern		VGSI and RNAV glidepath not coincident (VGSI Angle 3.00/TCH 25).		2600	VOCUT
JEBDU		LUKMY	KEBNE	* LNAV only	
2600 ← 360°		2100	1.9 NM to RW18	RW18	
180° →		2100	3.2 NM	1.9 NM	
GS 3.00°		* 1060			
TCH 45		6.8 NM		3.2 NM	
		1.9 NM			
CATEGORY	A	B	C	D	
LPV DA	629-¾		200 (200-¾)		
LNAV/VNAV DA	875-1½		446 (500-1½)		
LNAV MDA	940-1	511 (600-1)	940-1¾	511 (600-1¾)	
CIRCLING	940-1	510 (600-1)	940-1½	980-2 550 (600-2)	



EC-3, 07 FEB 2013 to 07 MAR 2013

EC-3, 07 FEB 2013 to 07 MAR 2013