

RNAV (GPS) RWY 32

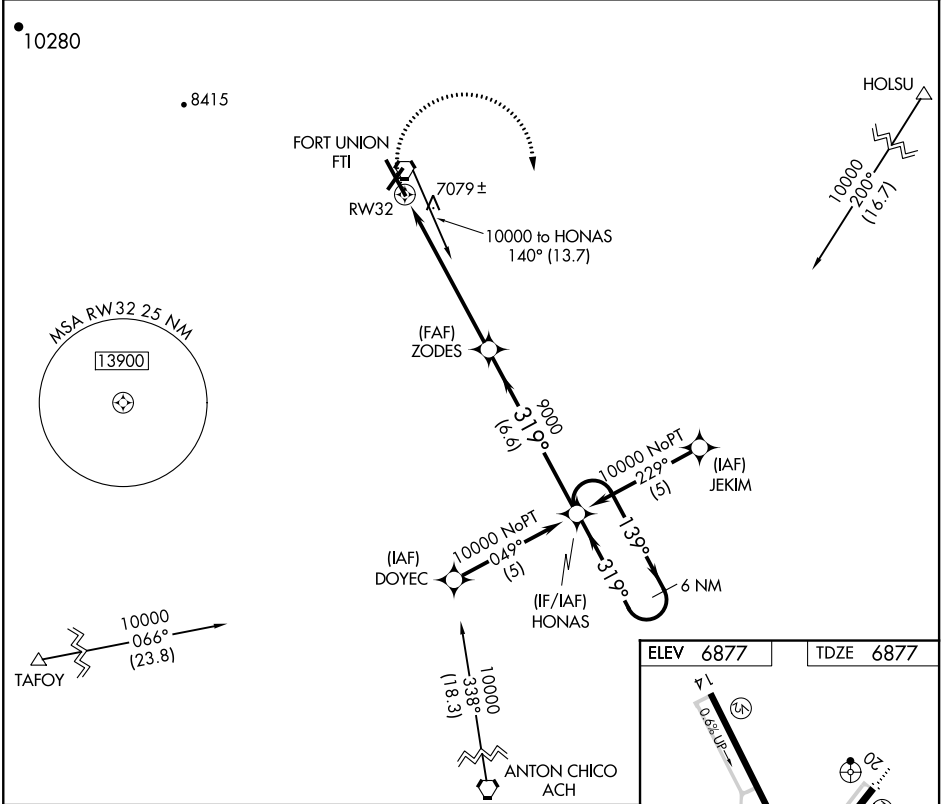
LAS VEGAS MUNI (LVS)

APP CRS 319°	Rwy Idg 8199
	TDZE 6877
	Apt Elev 6877

▼ DME/DME RNP-0.3 NA.
▲ If local altimeter setting not received, use Santa Fe Muni altimeter setting and increase all MDAs 200 feet.

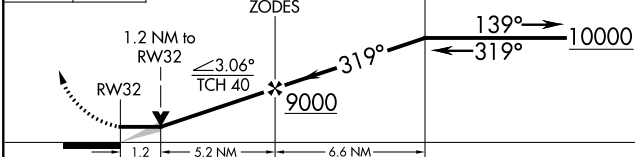
MISSED APPROACH: Climbing right turn to 10000 direct HONAS and hold.

ASOS 118.525	ALBUQUERQUE CENTER 132.8 346.35	UNICOM 122.8 (CTAF) 0
------------------------	---	---------------------------------

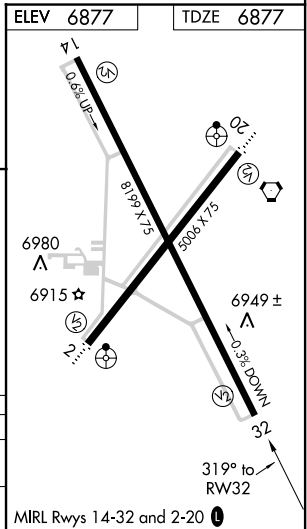


10000 HONAS VDP NA when using Santa Fe Muni altimeter setting.

HONAS 6 NM Holding Pattern



CATEGORY	A	B	C	D
LNVA MDA	7320-1	443 (500-1)	7320-1½ 443 (500-1½)	NA
CIRCLING	7400-1 523 (600-1)	7420-1 543 (600-1)	7420-1½ 543 (600-1½)	NA



SW-1, 07 FEB 2013 to 07 MAR 2013

SW-1, 07 FEB 2013 to 07 MAR 2013