

LAS VEGAS, NEVADA

# TACAN RWY 21L

TACAN LSV Chan 12	APCH CRS 207°	Rwy Idg 10,051 THRE 1865 Arprt Elev 1869
----------------------	------------------	--

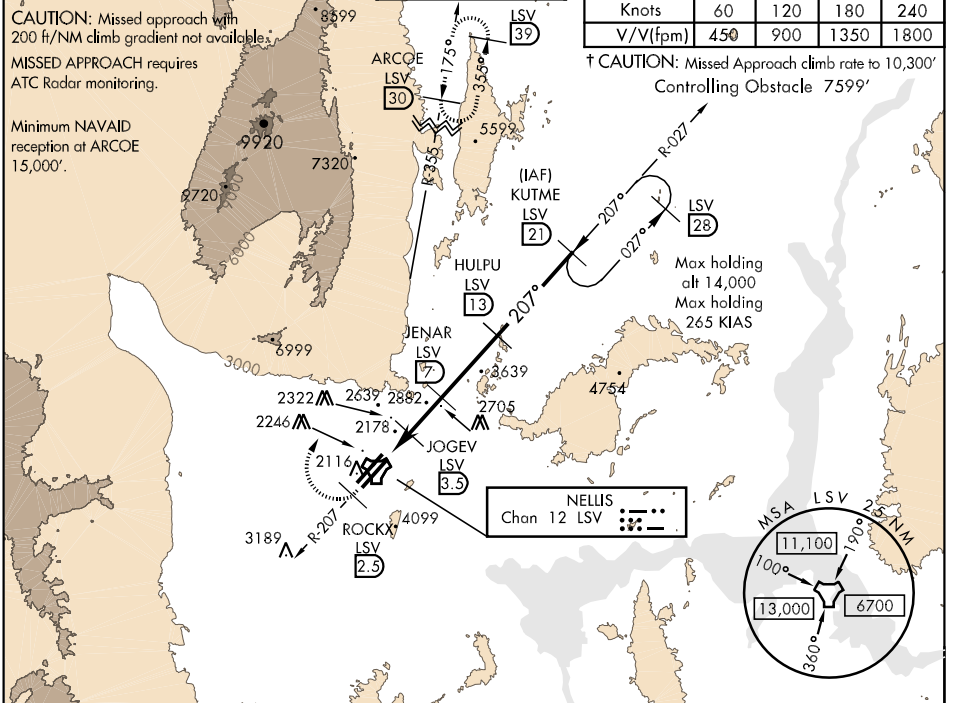
AL-227 [USAF]

NELLIS AFB (KLSV)

▼ \* When ALS inop, increase CAT AB RVR to 55, vis to 1 mile, CAT CDE vis to 1¼ miles.  
 \*\* Circling not authorized E of Rwy 3R-21L.  
 When Rwy 3L VGSi Inop, circling to Rwy 3L NA at night.

† MISSED APPROACH: Climb to 15,000, heading 209° to 2.5 DME (ROCKX), then climbing right turn heading 020° to join LSV TACAN R-355 to ARCOE and hold, continue climb in hold to 15,000.

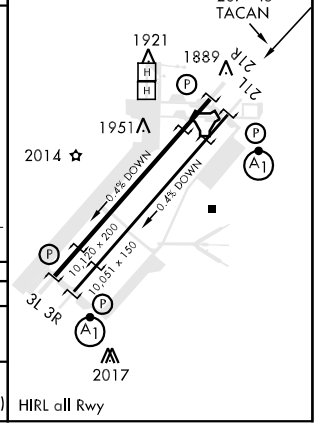
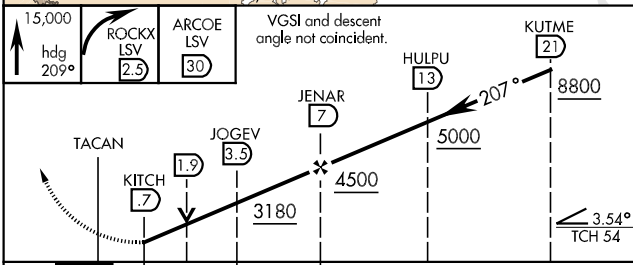
ATIS 270.1	NELLIS APP CON 124.95 273.55	NELLIS TOWER 132.55 327.0	GND CON 121.8 275.8	CINC DEL 120.9 289.4
---------------	---------------------------------	------------------------------	------------------------	-------------------------



SW-4, 07 FEB 2013 to 07 MAR 2013

SW-4, 07 FEB 2013 to 07 MAR 2013

ELEV 1869	THRE 1865
-----------	-----------



CATEGORY	A	B	C	D	E
S-21L *	2480/24 615 (700-½)		2480-1¾ 615 (700-1¾)		
CIRCLING **	2480-1 611 (700-1)	2680-1¼ 811 (900-1¼)	2680-2½ 811 (900-2½)	2680-2¾ 811 (900-2¾)	2900-3 1031 (1100-3)

LAS VEGAS, NEVADA 36°14'N-115°02'W NELLIS AFB (KLSV)

Amdt 5 15NOV12

# TACAN RWY 21L