

LOC/DME Y RWY 21L

LOC I-DIQ 109.1	APCH CRS 207°	Rwy Idg THRE Arprt Elev 10,051 1865 1869
---------------------------	-------------------------	--

AL-227 [USAF]

NELLIS AFB (KLSV)

* When ALS inop, increase CAT CDE vis to 1½ miles.
 ** Circling not authorized E of Rwy 3R-21L.
 When Rwy 3L VGSIs inop, circling to Rwy 3L NA at night.

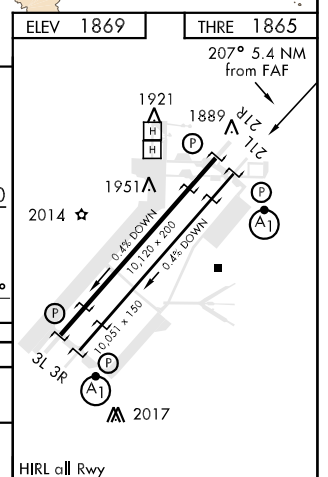
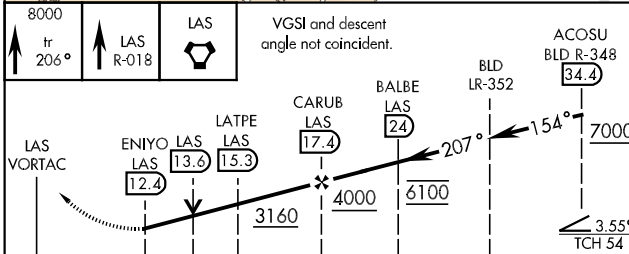
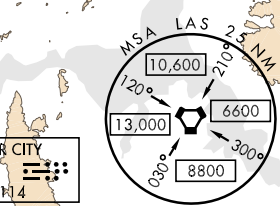
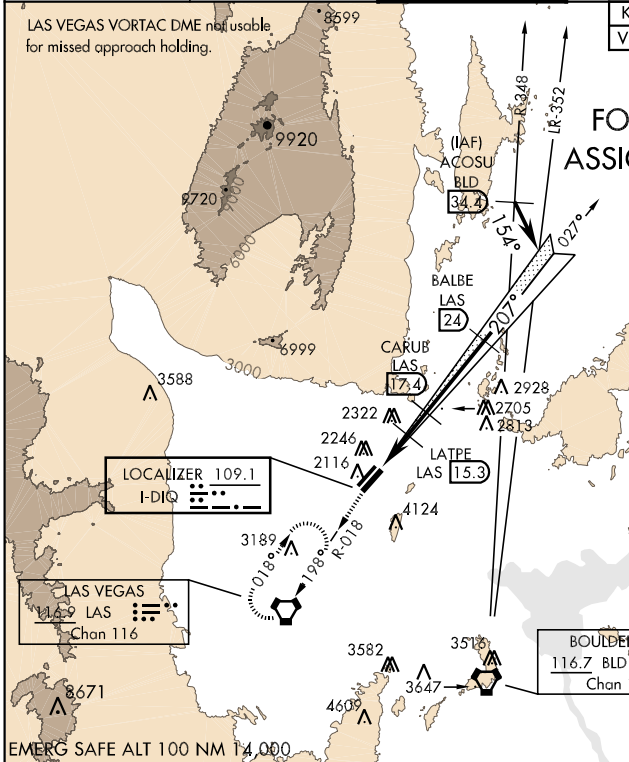
† MISSED APPROACH: Climb to 8000, track 206° to intercept the LAS VORTAC R-018 to LAS and hold, continue climb in hold to 8000.

ATIS 270.1	NELLIS APP CON 124.95 273.55	NELLIS TOWER 132.55 327.0	GND CON 121.8 275.8	CINC DEL 120.9 289.4
----------------------	--	-------------------------------------	-------------------------------	--------------------------------

Knots	60	120	180	240
V/V(fpm)	450	900	1350	1800

† CAUTION: Missed Approach
ATC Minimum Climb Rate to 8000

**FOR USE BY NELLIS AFB
ASSIGNED AIRCRAFT ONLY**



ELEV 1869	THRE 1865		
207° 5.4 NM from FAF			
CATEGORY	C	D	E
S-LOC 21L*	2420/60	555 (600-1½)	
CIRCLING**	2680-2½ 811 (900-2½)	2680-2¾ 811 (900-2¾)	2900-3 1031 (1100-3)

LOC/DME Y RWY 21L

SW-4, 07 FEB 2013 to 07 MAR 2013

SW-4, 07 FEB 2013 to 07 MAR 2013