

# ILS or LOC/DME Z RWY 21L

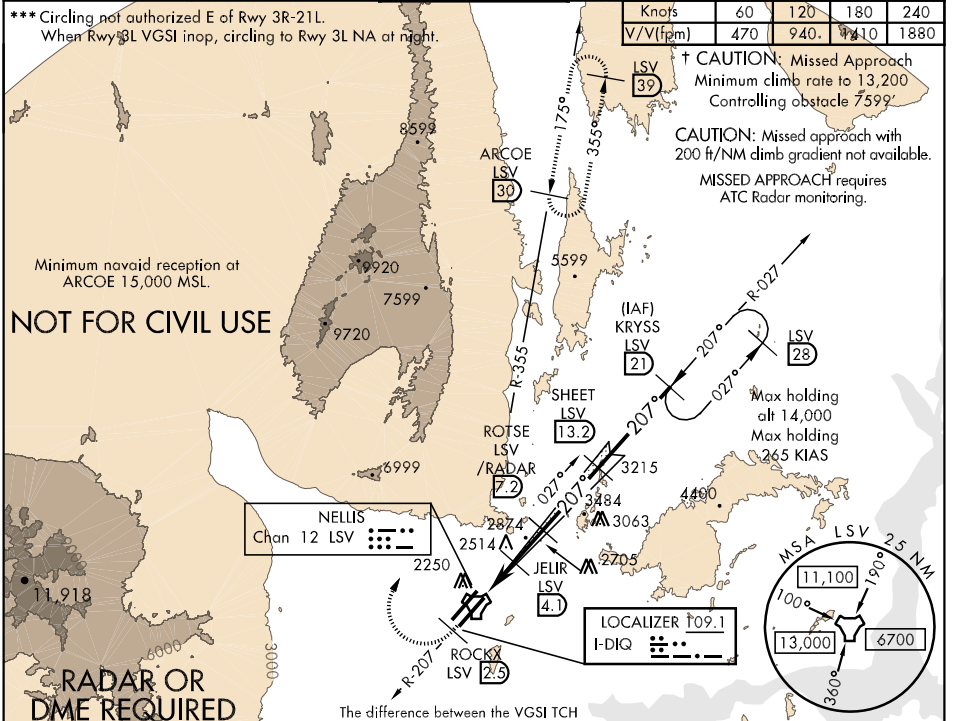
LOC I-DIQ <b>109.1</b>	APCH CRS <b>207°</b>	Rwy ldg <b>10,051</b> THRE <b>1865</b> Arpt Elev <b>1869</b>
---------------------------	-------------------------	---

AL-227 [USAF]

NELLIS AFB (KLSV)

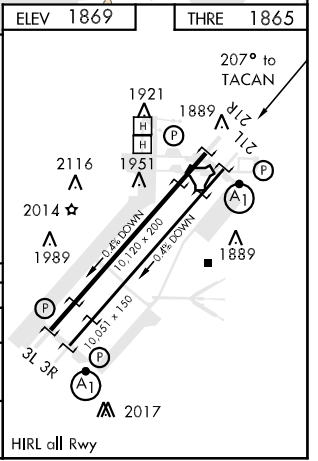
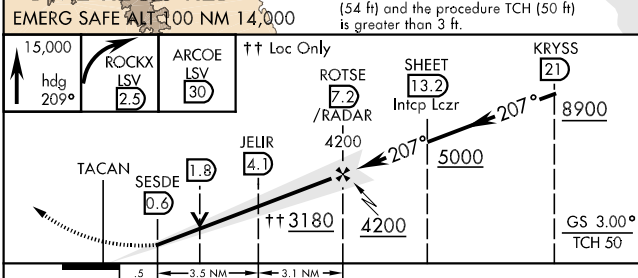
▼ \* When ALS inop, increase all CAT RVR to 40, vis to ¾ mile.  
 \*\* When ALS inop, increase CAT AB RVR to 55, vis to 1 mile, CAT CDE vis to 1 ¾ miles.  
 † MISSED APPROACH: Climb to 15,000, heading 209° to 2.5 DME (ROCKX), then climbing right turn heading 020° to join LSV TACAN R-355 to ARCOE and hold, continue climb in hold to 15,000.

ATIS <b>270.1</b>	NELLIS APP CON <b>124.95 273.55</b>	NELLIS TOWER <b>132.55 327.0</b>	GND CON <b>121.8 275.8</b>	CLNC DEL <b>120.9 289.4</b>
----------------------	--	-------------------------------------	-------------------------------	--------------------------------



SW-4, 07 FEB 2013 to 07 MAR 2013

SW-4, 07 FEB 2013 to 07 MAR 2013



CATEGORY	A	B	C	D	E
S-ILS 21L *	2065/24		200	(200-½)	
S-LOC 21L **	2440/24 575 (600-½)		2440-1¼ 575 (600-1¼)		
CIRCLING ***	2480-1 611 (700-1)	2680-1¼ 811 (900-1¼)	2680-2½ 811 (900-2½)	2680-2¾ 811 (900-2¾)	2900-3 1031 (1100-3)

# ILS or LOC/DME Z RWY 21L