

LAS VEGAS, NEVADA

# HI-TACAN Z RWY 21L

TACAN LSV Chan 12	APCH CRS 207°	Rwy Idg 10,051 THRE 1865 Arprt Elev 1869
-------------------	---------------	--

JAL-227 [USAF]

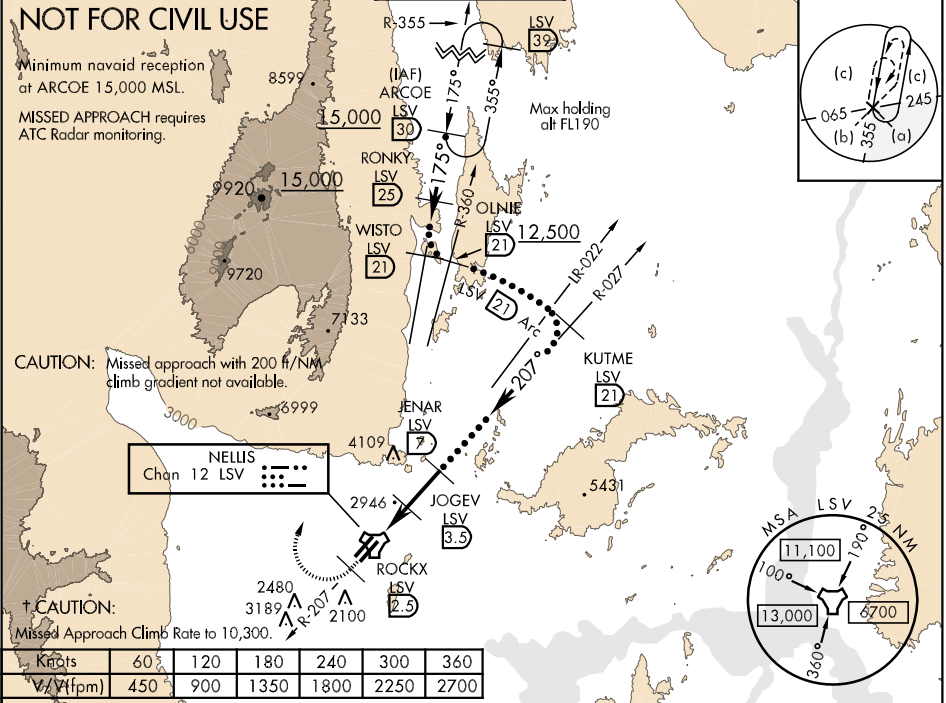
NELLIS AFB (KLSV)

▼ \* When ALS inop, increase CAT CDE vis to 1 3/4 miles.  
 \*\* Circling not authorized E of Rwy 3R-21L.  
 When Rwy 3L VGS1 inop, circling to Rwy 3L NA at night.



† MISSED APPROACH: Climb to 15,000, heading 209° to 2.5 DME (ROCKX), then climbing right turn heading 020° to join LSV TACAN R-355 to ARCOE and hold, continue climb in hold to 15,000.

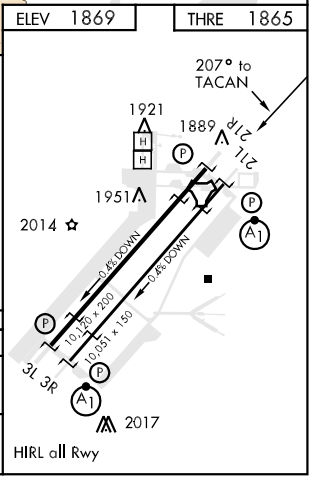
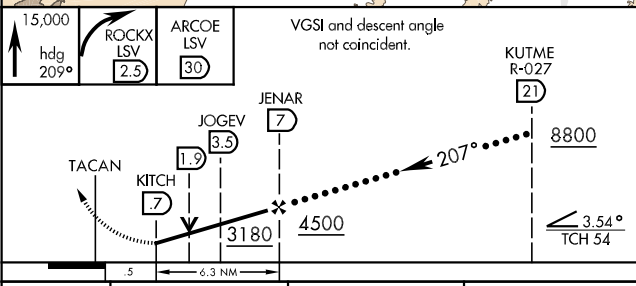
ATIS 270.1	NELLIS APP CON 124.95 273.55	NELLIS TOWER 132.55 327.0	GND CON 121.8 275.8	CLNC DEL 120.9 289.4
------------	------------------------------	---------------------------	---------------------	----------------------



SW-4, 07 FEB 2013 to 07 MAR 2013

SW-4, 07 FEB 2013 to 07 MAR 2013

ELEV 1869	THRE 1865
-----------	-----------



CATEGORY	C	D	E
S-21L *	2480-1 3/4 811 (900-2 1/2)	615 (700-1 3/4)	
CIRCLING **	2680-2 1/2 811 (900-2 1/2)	2680-2 3/4 811 (900-2 3/4)	2900-3 1031 (1100-3)

LAS VEGAS, NEVADA  
Amdt 5 15NOV12

36°14'N-115°02'W

NELLIS AFB (KLSV)

# HI-TACAN Z RWY 21L