

HI-TACAN RWY 3R

TACAN Chan 12	LSV	APCH CRS 026°	Rwy Idg THRE 1826 Arpt Elev 1869
------------------	-----	------------------	--

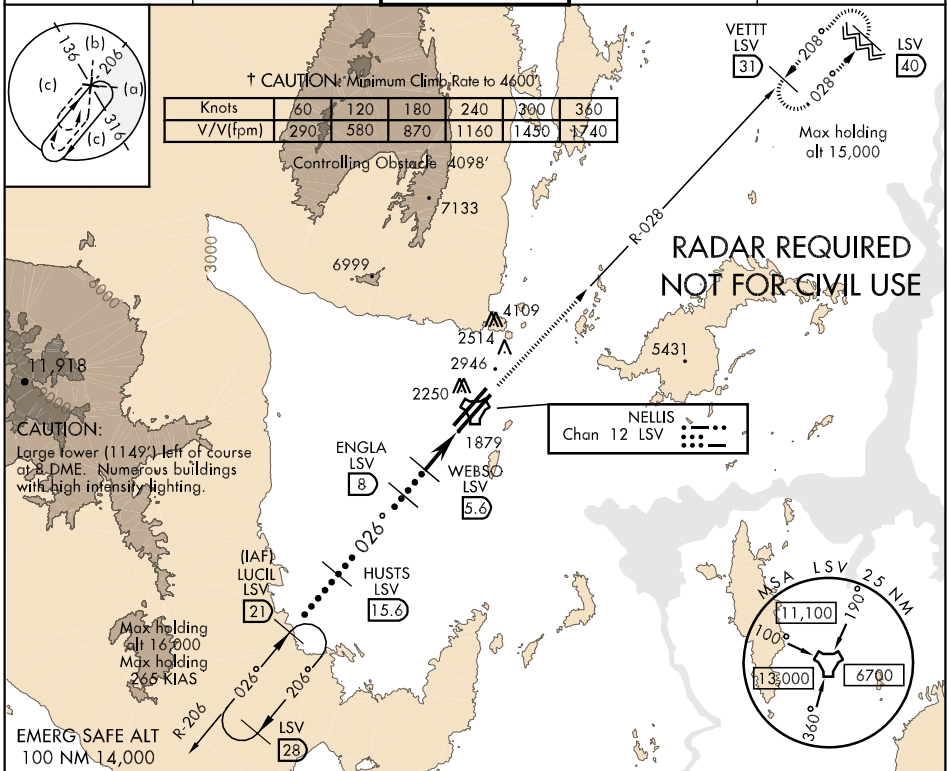
JAL-227 [USAF]

NELLIS AFB (KLSV)

* When ALS inop, increase CAT CDE vis to 3 miles.
 ** When ALS inop, increase CAT CDE vis to 1 3/8 miles.
 *** Circling not authorized E of Rwy 3R-21L.
 When Rwy 3L VGS1 inop, circling to Rwy 3L NA at night.

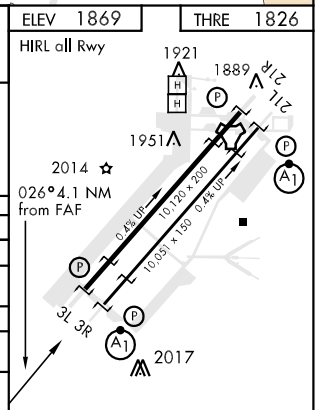
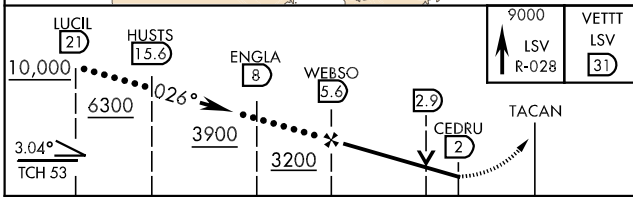
† MISSED APPROACH: Climb to 9000 on LSV TACAN R-028 to VETT and hold, continue climb in hold to 9000.

ATIS 270.1	NELLIS APP CON 124.95 273.55	NELLIS TOWER 132.55 327.0	GND CON 121.8 275.8	CLNC DEL 120.9 289.4
---------------	---------------------------------	------------------------------	------------------------	-------------------------



SW-4, 07 FEB 2013 to 07 MAR 2013

SW-4, 07 FEB 2013 to 07 MAR 2013



CATEGORY	C	D	E
S-3R*	2840-2 1/2	1014 (1000-2 1/2)	
CIRCLING***	2840-3 971 (1000-3)		2900-3 1031 (1100-3)
BELOW MINIMA REQUIRES MISSED APPROACH CLIMB GRADIENT			
† S-3R**	2320/50 494 (500-1)		
† CIRCLING***	2680-2 1/2 811 (900-2 1/2)	2680-2 3/4 811 (900-2 3/4)	2900-3 1031 (1100-3)

HI-TACAN RWY 3R