

HI-ILS or LOC/DME Z RWY 21L

LOC I-DIQ 109.1	APCH CRS 207°	Rwy ldg 10,051 THRE 1865 Arpt Elev 1869
---------------------------	-------------------------	---

JAL-227 [USAF]

NELLIS AFB (KLSV)

* When ALS inop, increase CAT CDE RVR to 40, vis to ¼ mile.
 ** When ALS inop, increase CAT CDE vis to 1½ miles.
 *** Circling not authorized E of Rwy 3R-21L.
 When Rwy 3L VGSI inop, circling to Rwy 3L NA at night.

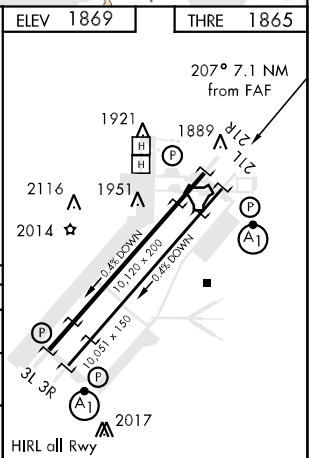
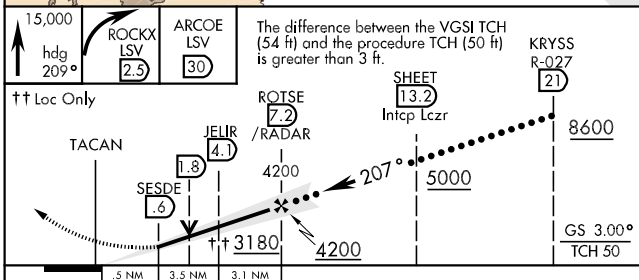
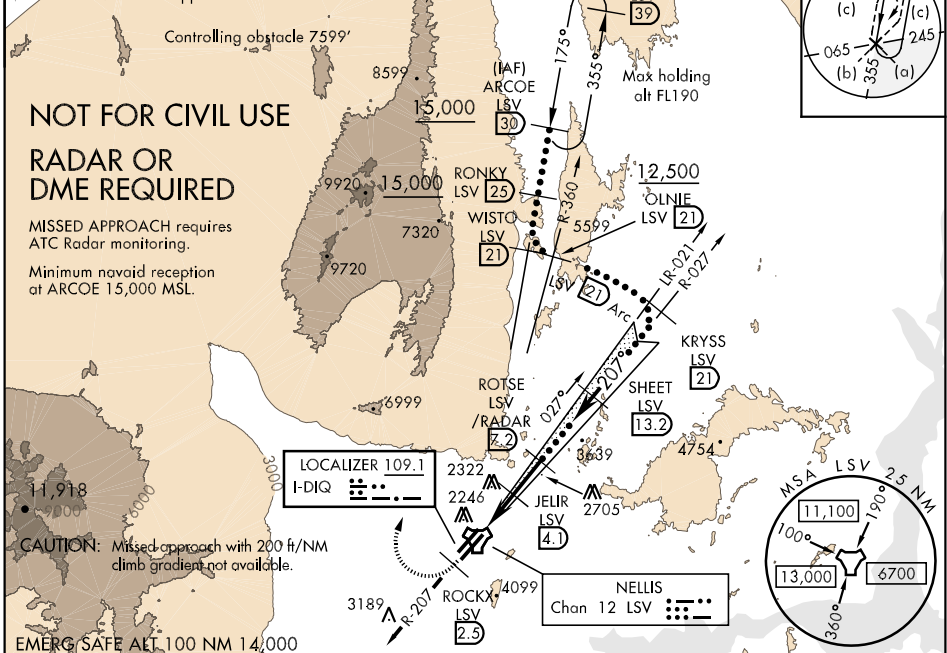


† MISSED APPROACH: Climb to 15,000, heading 209° to 2.5 DME (ROCKX), then climbing right turn heading 020° to join LSV TACAN R-355 to ARCOE and hold, continue climb-in-hold to 15,000.

ATIS 270.1	NELLIS APP CON 124.95 273.55	NELLIS TOWER 132.55 327.0	GND CON 121.8 275.8	CLNC DEL 120.9 289.4
----------------------	--	-------------------------------------	-------------------------------	--------------------------------

Knots	60	120	180	240	300	360
V/Vl(ft) †	470	940	1410	1880	2350	2820

† CAUTION: Missed Approach Minimum climb rate to 13,200.



CATEGORY	C	D	E
S-ILS 21L*	2065/24	200 (200-½)	
S-LOC 21L**	2440-1¼	575 (600-1¼)	
CIRCLING ***	2680-2½ 811 (900-2½)	2680-2¾ 811 (900-2¾)	2900-3 1031 (1100-3)

HI-ILS or LOC/DME Z RWY 21L

SW-4, 07 FEB 2013 to 07 MAR 2013

SW-4, 07 FEB 2013 to 07 MAR 2013