

ATIS  
 270.1  
 CLNC DEL  
 120.9 289.4  
 GND CON  
 121.8 275.8  
 NELLIS TOWER  
 132.55 327.0  
 NELLIS CONTROL  
 119.35 254.4  
 NELLIS DEP CON  
 135.1 385.4

Rwy	Knots	60	120	180	240	300	360
3 L/R (a)	V/V(fpm)	400	800	1200	1600	2000	2400
21L/R (b)	V/V(fpm)	390	780	1170	1560	1950	2340

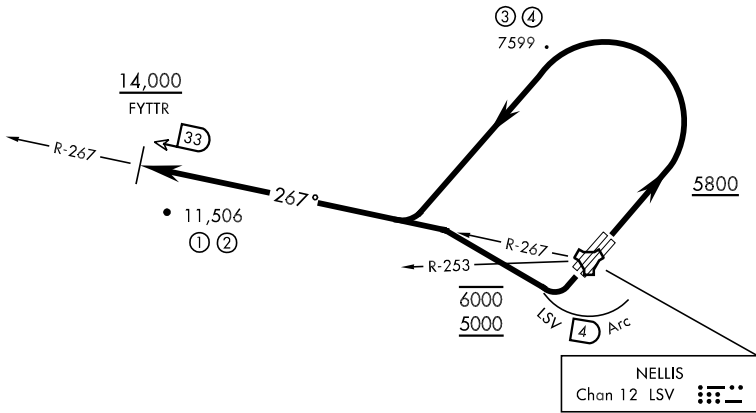
Minimum Climb Rate

- (a) to 9600
- (b) to 13,500

### RADAR REQUIRED FOR RWY 3L/R DEPARTURES

- ① 29.81 NM from Rwy 21L
- ② 29.67 NM from Rwy 21R
- ③ 15.43 NM from Rwy 3L
- ④ 15.57 NM from Rwy 3R

CAUTION: If unable to comply with restrictions advise ATC prior to departure.



SW-4, 07 FEB 2013 to 07 MAR 2013

SW-4, 07 FEB 2013 to 07 MAR 2013

### DEPARTURE ROUTE DESCRIPTION

**TAKE-OFF RWY 3L/R:** Fly runway heading until reaching 5800, then climbing left turn to intercept LSV TACAN R-267 outbound. Cross FYTR at or above 14,000 or as assigned, then via assigned route.

**TAKE-OFF RWY 21L/R:** Turn right to intercept LSV TACAN R-267 outbound, remain within LSV 4 DME until joining LSV R-267, cross LSV R-253 between 5000 and 6000. Cross FYTR at or above 14,000 or as assigned, then via assigned route.

**NOISE ABATEMENT PROCEDURES:** Fly IAW Nellis Noise Abatement instructions published in AP/1.